

SCBA Fit in EZ-Loc Fixed Top-Clamp Brackets

| SCBA Brand, Model | AirCyl Type | AirCyl Dim | Bracket Model | Upper Bracket Location | Bumper Location | Bumper Position | Fit | | |
|---|---|------------------------------------|-----------------------|------------------------------|--------------------|--------------------|------|--|--|
| | | Inches | | A, B | 1,2,3 | S, L | Y, N | | |
| Drager | | | | | | | | | |
| Drager Air Boss Evolution Plus PSS 100 | 30 Min 2216 PSI | 6.7" Dia X 23.4" Carleton | EZ-Loc Fixed Clamp | A | 2 | S | Yes | | |
| | | | | B | 2 | S | Yes | | |
| Drager Air Boss Evolution Plus PSS 100 | 30Min 2216 PSI Alum- Flat Bottom | 6-13/16"D X 24" Luxfer | EZ-Loc Fixed Clamp | A | 1 | L | Yes | | |
| Drager Air Boss Evolution Plus PSS 100 | 30 Min 4500 PSI | 5-5/16"D X 23" Carleton | EZ-Loc Fixed Clamp | A | 2 | S | Yes | | |
| | | | | B | 2 | S | Yes | | |
| Drager Air Boss Evolution Plus PSS 100 | 45 Min 4500 PSI | 6.5" D X 22" Carleton | EZ-Loc Fixed Clamp | B | 2 | S | Yes | | |
| Drager Air Boss Evolution Plus PSS 100 | 60 Min 4500 PSI | 6.8" D X 25" Carleton | EZ-Loc Fixed Clamp | B | 2 | S | Yes | | |
| | | | | | | | | | |
| | | | | | | | | | |

SCBA Fit in EZ-Loc Fixed Top-Clamp Brackets

| SCBA Brand, Model | AirCyl Type | AirCyl Dim Inches | Bracket Model | Upper Bracket Location A, B | Bumper Location 1,2,3 | Bumper Position S, L | Fit Y, N |
|--|---|------------------------------------|-----------------------|--------------------------------|--------------------------|-------------------------|------------------|
| Drager (Con't) | | | | | | | |
| Drager Air Boss Evolution | 30 Min 2216 PSI | 6.7" Dia X 23.4" Carleton | EZ-Loc Fixed Clamp | A <hr/> B | 2 <hr/> 2 | S <hr/> S | Yes <hr/> Yes |
| Drager Air Boss Evolution Plus PSS 100 | 30Min 2216 PSI Alum- Flat Bottom | 6-13/16"D X 24" Luxfer | EZ-Loc Fixed Clamp | A | 1 | L | Yes |
| Drager Air Boss Evolution | 30 Min 4500 PSI | 5-5/16"D X 23" Carleton | EZ-Loc Fixed Clamp | B | 3 | L | Yes |
| Drager Air Boss Evolution | 45 Min 4500 PSI | 6.5" D X 22" Carleton | EZ-Loc Fixed Clamp | B | 2 | S | Yes |
| Drager Air Boss Evolution | 60 Min 4500 PSI | 6.8" D X 25" Carleton | EZ-Loc Fixed Clamp | A | 1 | S | Yes |

SCBA Fit in EZ-Loc Fixed Top-Clamp Brackets

| SCBA Brand, Model | AirCyl Type | AirCyl Dim | Bracket Model | Upper Bracket Location | Bumper Location | Bumper Position | Fit |
|-----------------------|---|------------------------------------|-----------------------|------------------------|-----------------|-----------------|------------------|
| | | Inches | | A, B | 1,2,3 | S, L | Y, N |
| Drager (Con't) | | | | | | | |
| Drager PSS-7000 | 30 Min 2216 PSI | 6.7" Dia X 23.4" Carleton | EZ-Loc Fixed Clamp | A <hr/> B | 2 <hr/> 2 | S <hr/> S | Yes <hr/> Yes |
| Drager PSS-7000 | 30Min 2216 PSI Alum- Flat Bottom | 6-13/16"D X 24" Luxfer | EZ-Loc Fixed Clamp | A | 1 | L | Yes |
| Drager PSS-7000 | 30 Min 4500 PSI | 5-5/16"D X 23" Carleton | EZ-Loc Fixed Clamp | B | 3 | L | Yes |
| Drager PSS-7000 | 45 Min 4500 PSI | 6.5" D X 22" Carleton | EZ-Loc Fixed Clamp | B | 2 | S | Yes |
| Drager PSS-7000 | 60 Min 4500 PSI | 6.8" D X 25" Carleton | EZ-Loc Fixed Clamp | A | 1 | S | Yes |
| | | | | | | | |
| | | | | | | | |

SCBA Fit in EZ-Loc Fixed Top-Clamp Brackets

| SCBA Brand, Model | AirCyl Type | AirCyl Dim Inches | Bracket Model | Upper Bracket Location A, B | Bumper Location 1,2,3 | Bumper Position S, L | Fit Y, N |
|--------------------------|-----------------------|------------------------------------|-----------------------|--------------------------------|--------------------------|-------------------------|-------------|
| GLOBAL | | | | | | | |
| Global Safety Pioneer | 30 Min 4500 PSI | 5.3" D X 23" Carleton | EZ-Loc Fixed Clamp | B | 3 | L | Yes |
| Global Safety Pioneer | 45 Min 4500 PSI | 6.5" D X 21" Carleton | EZ-Loc Fixed Clamp | B | 2 | S | Yes |
| Global Safety Pioneer | 60 Min 4500 PSI | 6.9" D X 24-3/4" Carleton | EZ-Loc Fixed Clamp | A | 2 | S | Yes |
| INTERSPIRO | | | | | | | |
| Interspiro Spiromatic S4 | 30 Min 4500 PSI | 5.4" D X 22" SCI | EZ-Loc Fixed Clamp | B | 2 | L | Yes |
| Interspiro Spiromatic S4 | 45 Min 4500 PSI | 6.3"D X 23" Carleton | EZ-Loc Fixed Clamp | A | 2 | S | Yes |
| Interspiro Spiromatic S4 | 60Min 4500 PSI | 6.9" D X 24-1/2" Carleton | EZ-Loc Fixed Clamp | A | 2 | S | Yes |

SCBA Fit in EZ-Loc Fixed Top-Clamp Brackets

| SCBA Brand, Model | AirCyl Type | AirCyl Dim Inches | Bracket Model | Upper Bracket Location A, B | Bumper Location 1,2,3 | Bumper Position S, L | Fit Y, N |
|---------------------------|-----------------------|-------------------------------------|-----------------------|--------------------------------|--------------------------|-------------------------|-------------|
| ISI-Avon | | | | | | | |
| ISI Viking DXL | 30 Min 4500 PSI | 5.4" D X 23-1/4" Carlton | EZ-Loc Fixed Clamp | A | 3 | L | Yes |
| ISI Viking DXL | 45 Min 4500 PSI | 6.4" D X 23" Carlton | EZ-Loc Fixed Clamp | B | 2 | S | Yes |
| ISI Viking DXL | 60Min 4500 PSI | 6-7/8" D X 24-3/4" Carlton | EZ-Loc Fixed Clamp | A | 2 | S | Yes |
| ISI (Avon-ISI) Viking Z-7 | 30 Min 2216 PSI | 6-9/16"D X 23-1/2" Luxfer | EZ-Loc Fixed Clamp | B | 2 | S | Yes |
| ISI (Avon-ISI) Viking Z-7 | 30 Min 4500 PSI | 5.3" D X 23-1/4" Carlton | EZ-Loc Fixed Clamp | A | 3 | L | Yes |
| ISI (Avon-ISI) Viking Z-7 | 45 Min 4500 PSI | 6.4" D X 23" Carlton | EZ-Loc Fixed Clamp | B | 2 | S | Yes |
| ISI (Avon-ISI) Viking Z-7 | 60Min 4500 PSI | 6-7/8" D X 24-1/2" Carlton | EZ-Loc Fixed Clamp | A | 3 | L | Yes |

SCBA Fit in EZ-Loc Fixed Top-Clamp Brackets

| SCBA Brand, Model | AirCyl Type | AirCyl Dim | Bracket Model | Upper Bracket Location | Bumper Location | Bumper Position | Fit |
|-------------------|---|-----------------------------------|-----------------------|------------------------|-----------------|-----------------|-----|
| | | Inches | | A, B | 1,2,3 | S, L | |
| MSA | | | | | | | |
| MSA Firehawk | 30Min 2216 PSI | 6.75" D X 22-1/4" Luxfer | EZ-Loc Fixed Clamp | B | 2 | S | Yes |
| MSA Firehawk | 30Min 2216 PSI Alum- Flat Bottom | 6-11/16"D X 24" Luxfer | EZ-Loc Fixed Clamp | A | 1 | L | Yes |
| MSA Firehawk | 30Min 3000 PSI | 6.75" D X 23-1/2" Luxfer | EZ-Loc Fixed Clamp | A | 2 | S | Yes |
| MSA Firehawk | 30Min 4500 PSI | 5.4" D X 21-1/2" Luxfer | EZ-Loc Fixed Clamp | B | 2 | L | Yes |
| MSA Firehawk | 45 Min 4500 PSI Low Profile | 6.3" X 23-1/4" Luxfer | EZ-Loc Fixed Clamp | A | 2 | S | Yes |
| MSA Firehawk | 45 Min 4500 PSI | 6.8"D X 21-1/4" Luxfer | EZ-Loc Fixed Clamp | B | 2 | S | Yes |
| MSA Firehawk | 60Min 4500 PSI | 7.1" D X 24" Luxfer | EZ-Loc Fixed Clamp | A | 2 | S | Yes |

SCBA Fit in EZ-Loc Fixed Top-Clamp Brackets

| SCBA Brand, Model | AirCyl Type | AirCyl Dim | Bracket Model | Upper Bracket Location | Bumper Location | Bumper Position | Fit |
|--------------------|---|-----------------------------------|-----------------------|------------------------|-----------------|-----------------|-----|
| | | Inches | | A, B | 1,2,3 | S, L | |
| MSA (Con't) | | | | | | | |
| MSA Firehawk M-7 | 30Min 2216 PSI | 6.75" D X 22-1/4" Luxfer | EZ-Loc Fixed Clamp | B | 2 | S | Yes |
| MSA Firehawk M-7 | 30Min 2216 PSI Alum- Flat Bottom | 6-11/16"D X 24" Luxfer | EZ-Loc Fixed Clamp | A | 1 | L | Yes |
| MSA Firehawk M-7 | 30Min 3000 PSI | 6.75" D X 23-1/2" Luxfer | EZ-Loc Fixed Clamp | A | 2 | S | Yes |
| MSA Firehawk M-7 | 30Min 4500 PSI | 5.4" D X 21-1/2" Luxfer | EZ-Loc Fixed Clamp | B | 2 | L | Yes |
| MSA Firehawk M-7 | 45 Min 4500 PSI Low Profile | 6.3" X 23-1/4" Luxfer | EZ-Loc Fixed Clamp | A | 2 | S | Yes |
| MSA Firehawk M-7 | 45 Min 4500 PSI | 6.8"D X 21-1/4" Luxfer | EZ-Loc Fixed Clamp | B | 2 | S | Yes |
| MSA Firehawk M-7 | 60Min 4500 PSI | 7.1" D X 24" Luxfer | EZ-Loc Fixed Clamp | A | 2 | S | Yes |
| | | | | | | | |
| | | | | | | | |

SCBA Fit in EZ-Loc Fixed Top-Clamp Brackets

| SCBA Brand, Model | AirCyl Type | AirCyl Dim Inches | Bracket Model | Upper Bracket Location A, B | Bumper Location 1,2,3 | Bumper Position S, L | Fit Y, N |
|---------------------|---|-----------------------------------|-----------------------|--------------------------------|--------------------------|-------------------------|-------------|
| MSA (Con't) | | | | | | | |
| MSA Stealth | 30Min 2216 PSI | 6.75" D X 22-1/4" Luxfer | EZ-Loc Fixed Clamp | B | 2 | S | Yes |
| MSA Stealth | 30Min 2216 PSI Alum- Flat Bottom | 6-11/16"D X 24" Luxfer | EZ-Loc Fixed Clamp | A | 1 | L | Yes |
| MSA Stealth | 30Min 3000 PSI | 6.75" D X 23-1/2" Luxfer | EZ-Loc Fixed Clamp | A | 2 | S | Yes |
| MSA Stealth | 30Min 4500 PSI | 5.4" D X 21-1/2" Luxfer | EZ-Loc Fixed Clamp | B | 2 | L | Yes |
| MSA Stealth | 45 Min 4500 PSI | 6.8"D X 21-1/4" Luxfer | EZ-Loc Fixed Clamp | A or B | 2 | S | Yes |
| MSA Stealth | 60Min 4500 PSI | 7.1" D X 24" Luxfer | EZ-Loc Fixed Clamp | A | 2 | S | Yes |
| MSA Firehawk G-1 | 30Min 2216 PSI | 6.75" D X 22-1/4" Luxfer | EZ-Loc Fixed Clamp | A | 2 | S | Yes |
| | | | | B | 2 | S | Yes |

SCBA Fit in EZ-Loc Fixed Top-Clamp Brackets

| SCBA Brand, Model | AirCyl Type | AirCyl Dim Inches | Bracket Model | Upper Bracket Location A, B | Bumper Location 1,2,3 | Bumper Position S, L | Fit Y, N |
|--------------------|---|-----------------------------------|-----------------------|--------------------------------|--------------------------|-------------------------|-------------|
| MSA (Con't) | | | | | | | |
| MSA Firehawk G-1 | 30Min 2216 PSI Alum- Flat Bottom | 6-11/16"D X 24" Luxfer | EZ-Loc Fixed Clamp | A | 1 | L | Yes |
| MSA Firehawk G-1 | 30Min 3000 PSI | 6.75" D X 23-1/2" Luxfer | EZ-Loc Fixed Clamp | A | 2 | S | Yes |
| | | | | B | 2 | S | Yes |
| MSA Firehawk G-1 | 30Min 4500 PSI | 5.4" D X 21-1/2" Luxfer | EZ-Loc Fixed Clamp | A | 2 | L | Yes |
| | | | | B | 2 | L | Yes |
| MSA Firehawk G-1 | 45 Min 4500 PSI Low Profile | 6.3" X 23-1/4" Luxfer | EZ-Loc Fixed Clamp | B | 2 | S | Yes |
| MSA Firehawk G-1 | 45 Min 4500 PSI | 6.8"D X 21-1/4" Luxfer | EZ-Loc Fixed Clamp | A | 2 | S | Yes |
| | | | | B | 2 | S | Yes |
| MSA Firehawk G-1 | 60Min 4500 PSI | 7.1" D X 24" Luxfer | EZ-Loc Fixed Clamp | A | 2 | S | Yes |

SCBA Fit in EZ-Loc Fixed Top-Clamp Brackets

| SCBA Brand, Model | AirCyl Type | AirCyl Dim Inches | Bracket Model | Upper Bracket Location A, B | Bumper Location 1,2,3 | Bumper Position S, L | Fit Y, N |
|-------------------|---|------------------------------------|-----------------------|--------------------------------|--------------------------|-------------------------|-------------|
| Scott | | | | | | | |
| Scott AP-50 | 30Min 2216 PSI | 6-9/16"D X 23-1/2" Luxfer | EZ-Loc Fixed Clamp | A | 2 | S | Yes |
| Scott AP-50 | 30Min 2216 PSI Alum- Flat Bottom | 6-11/16"D X 24" Luxfer | EZ-Loc Fixed Clamp | A | 1 | L | Yes |
| Scott AP-50 | 30Min 4500 PSI | 5.4" D X 21-1/2" Luxfer | EZ-Loc Fixed Clamp | B | 3 | L | Yes |
| Scott AP-50 | 45Min 4500 PSI | 6.2" D X 23-1/2" SCI | EZ-Loc Fixed Clamp | A | 2 | S | Yes |
| Scott AP-50 | 45Min 4500 PSI | 6.32" D X 20.9" | EZ-Loc Fixed Clamp | B | 3 | S | Probably |
| Scott AP-50 | 45Min 4500 PSI | 6-7/8"D X 21-1/4" Luxfer | EZ-Loc Fixed Clamp | B | 3 | S | Yes |
| Scott AP-50 | 60Min 4500 PSI | 6-7/8"D X 24-3/4" Luxfer | EZ-Loc Fixed Clamp | A | 2 | S | Yes |

SCBA Fit in EZ-Loc Fixed Top-Clamp Brackets

| SCBA Brand, Model | AirCyl Type | AirCyl Dim | Bracket Model | Upper Bracket Location | Bumper Location | Bumper Position | Fit | | |
|----------------------|---|------------------------------------|-----------------------|------------------------|-----------------|-----------------|------------|--|--|
| | | Inches | | A, B | 1,2,3 | S, L | Y, N | | |
| Scott (Con't) | | | | | | | | | |
| Scott AP-75 | 30Min 2216 PSI | 6-9/16"D X 23-1/2" Luxfer | EZ-Loc Fixed Clamp | A | 2 | S | Yes | | |
| Scott AP-75 | 30Min 2216 PSI Alum- Flat Bottom | 6-11/16"D X 24" Luxfer | EZ-Loc Fixed Clamp | A | 1 | L | Yes | | |
| Scott AP-75 | 30Min 4500 PSI | 5.4" D X 21-1/2" Luxfer | EZ-Loc Fixed Clamp | B | 3 | L | Yes | | |
| Scott AP-75-??? | 30 Min 5500 PSI | 4-15/16" D X 22" L Luxfer | EZ-Loc Fixed Clamp | A B | 3 3 | L L | Yes Yes | | |
| Scott AP-75 | 45Min 4500 PSI | 6.2" D X 23-1/2" SCI | EZ-Loc Fixed Clamp | A | 2 | S | Yes | | |
| Scott AP-75 | 45Min 4500 PSI | 6-7/8"D X 21-1/4" Luxfer | EZ-Loc Fixed Clamp | B | 3 | S | Yes | | |
| Scott AP-75 | 45Min 5500 PSI | 6.10"D X 21.9" Luxfer | EZ-Loc Fixed Clamp | A B | 3 3 | S S | Yes Yes | | |
| Scott AP-75 | 60Min 4500 PSI | 6-7/8"D X 24-3/4" Luxfer | EZ-Loc Fixed Clamp | A | 2 | S | Yes | | |
| | | | | | | | | | |

SCBA Fit in EZ-Loc Fixed Top-Clamp Brackets

| SCBA Brand, Model | AirCyl Type | AirCyl Dim | Bracket Model | Upper Bracket Location | Bumper Location | Bumper Position | Fit | | |
|----------------------|---|------------------------------------|-----------------------|------------------------|-----------------|-----------------|------|--|--|
| | | Inches | | A, B | 1,2,3 | S, L | Y, N | | |
| Scott (Con't) | | | | | | | | | |
| Scott NXG2 | 30Min 2216 PSI | 6-9/16"D X 23-1/2" Luxfer | EZ-Loc Fixed Clamp | A | 2 | S | Yes | | |
| Scott NXG2 | 30Min 2216 PSI Alum- Flat Bottom | 6-11/16"D X 24" Luxfer | EZ-Loc Fixed Clamp | A | 1 | L | Yes | | |
| Scott NXG2 | 30Min 4500 PSI | 5.4" D X 21-1/2" Luxfer | EZ-Loc Fixed Clamp | B | 3 | L | Yes | | |
| Scott NXG2 | 45Min 4500 PSI | 6.2" D X 23-1/2" SCI | EZ-Loc Fixed Clamp | A | 3 | S | Yes | | |
| Scott NXG2 | 45Min 4500 PSI | 6-7/8"D X 21-1/4" Luxfer | EZ-Loc Fixed Clamp | B | 2 | S | Yes | | |
| Scott NXG2 | Carbon 60Min 4500 PSI | 6-7/8"D X 24-3/4" Luxfer | EZ-Loc Fixed Clamp | A | 2 | S | Yes | | |
| Scott NXG2 | Kevlar 60Min 4500 PSI | 7-1/8"D X 25-1/4" Luxfer | EZ-Loc Fixed Clamp | A | 1 | S | Yes | | |
| | | | | | | | | | |
| | | | | | | | | | |

SCBA Fit in EZ-Loc Fixed Top-Clamp Brackets

| SCBA Brand, Model | AirCyl Type | AirCyl Dim | Bracket Model | Upper Bracket Location | Bumper Location | Bumper Position | Fit |
|----------------------|---|------------------------------------|-----------------------|------------------------|-----------------|-----------------|------|
| | | Inches | | A, B | 1,2,3 | S, L | Y, N |
| Scott (Con't) | | | | | | | |
| Scott NXG7 | 30Min 4500 PSI | 5.4" D X 21-1/2" Luxfer | EZ-Loc Fixed Clamp | B | 3 | L | Yes |
| Scott NXG7 | 30Min 2216 PSI | 6-9/16"D X 23-1/2" Luxfer | EZ-Loc Fixed Clamp | A | 2 | S | Yes |
| Scott NXG7 | 30Min 2216 PSI Alum- Flat Bottom | 6-11/16"D X 24" Luxfer | EZ-Loc Fixed Clamp | A | 1 | L | Yes |
| Scott NXG7 | 45Min 4500 PSI | 6.2" D X 23-1/2" SCI | EZ-Loc Fixed Clamp | A | 2 | S | Yes |
| Scott NXG7 | 45Min 4500 PSI | 6-7/8"D X 21-1/4" Luxfer | EZ-Loc Fixed Clamp | B | 3 | L | Yes |
| Scott NXG7 | 60Min 4500 PSI | 6-7/8"D X 24-3/4" Luxfer | EZ-Loc Fixed Clamp | A | 2 | S | Yes |

SCBA Fit in EZ-Loc Fixed Top-Clamp Brackets

| SCBA Brand, Model | AirCyl Type | AirCyl Dim | Bracket Model | Upper Bracket Location | Bumper Location | Bumper Position | Fit | | |
|----------------------|---------------------------------------|--------------------------------------|-----------------------|------------------------|-----------------|-----------------|------------------|--|--|
| | | Inches | | A, B | 1,2,3 | S, L | Y, N | | |
| Scott (Con't) | | | | | | | | | |
| Scott X-3 | 30Min 2216 PSI | 6-9/16"D X 23-1/2" L Luxfer | EZ-Loc Fixed Clamp | A | 2 | S | Yes | | |
| Scott X-3 | 30Min 2216 PSI Alum Flat Top | x.xx"D X x.xx"L Luxfer | | | | | | | |
| Scott X-3 | 30Min 4500 PSI | 5.4" D X 21-1/2" Luxfer | EZ-Loc Fixed Clamp | A <hr/> B | 2 <hr/> 2 | L <hr/> L | Yes <hr/> Yes | | |
| Scott X-3 | 30Min 4500 PSI w/ Cover | x.xx"D X x.xx"L Luxfer | | | | | | | |
| Scott X-3 | 30Min 5500 PSI | X 21-1/2" Luxfer | EZ-Loc Fixed Clamp | A <hr/> B | 3 <hr/> 3 | L <hr/> L | Yes <hr/> Yes | | |
| Scott X-3 | 30Min 5500 PSI w/ Cover | x.xx"D X x.xx"L Luxfer | | | | | | | |
| Scott X-3 | 45Min 4500 PSI | 6.2" D X 23-1/2" L SCI | EZ-Loc Fixed Clamp | A | 2 | L | Yes | | |
| Scott X-3 | 45Min 4500 PSI w/ Cover | 6.2" D X 23-1/2" L SCI | EZ-Loc Fixed Clamp | | | | | | |
| Scott X-3 | 45Min 4500 PSI | 6.8"D X 21-1/4" L Luxfer | EZ-Loc Fixed Clamp | A | 1 | L | Yes | | |
| Scott X-3 | 45Min 5500 PSI | 6.0" D X 22.25" L Luxfer | EZ-Loc Fixed Clamp | A | 2 | L | Yes | | |

SCBA Fit in EZ-Loc Fixed Top-Clamp Brackets

| SCBA Brand, Model | AirCyl Type | AirCyl Dim | Bracket Model | Upper Bracket Location | Bumper Location | Bumper Position | Fit | | |
|----------------------|----------------------------------|------------------------------------|-----------------------|------------------------|-----------------|-----------------|------|--|--|
| | | Inches | | A, B | 1,2,3 | S, L | Y, N | | |
| Scott (Con't) | | | | | | | | | |
| Scott X-3 | 45Min 5500 PSI w/ Cover | x.xx" D X xx.xx" L Luxfer | | | | | | | |
| Scott X-3 | 60Min 4500 PSI | 6-7/8" D X 24-3/4" Luxfer | EZ-Loc Fixed Clamp | A | 2 | S | Yes | | |
| Scott X-3 | 60min 4500 PSI w/ Cover | 6-7/8" D X 24-3/4" Luxfer | | | | | | | |
| Scott X-3 | 60Min 5500 PSI | 6.53" D X 24.5" L Luxfer | EZ-Loc Fixed Clamp | A | 2 | S | Yes | | |
| Scott X-3 | 60Min 5500 PSI w/cover | x.xx" D X xx.x5" L Luxfer | | | | | | | |
| Scott X-3 | 75Min 5500 PSI | 7.15" D X 25.5" L Luxfer | EZ-Loc Fixed Clamp | A | 1 | S | Yes | | |
| Scott X-3 | 75Min 5500 PSI w/cover | x.xx" D X xx.xx" L Luxfer | | | | | | | |
| | | | | | | | | | |
| | | | | | | | | | |

SCBA Fit in EZ-Loc Fixed Top-Clamp Brackets

| SCBA Brand, Model | AirCyl Type | AirCyl Dim | Bracket Model | Upper Bracket Location | Bumper Location | Bumper Position | Fit |
|-----------------------------|----------------------|-------------------------------------|-----------------------|------------------------|-----------------|-----------------|------|
| | | Inches | | A, B | 1,2,3 | S, L | Y, N |
| Survivair | | | | | | | |
| Sperian (Survivair) Panther | 30Min 2216 PSI | 6-9/16" D X 23-1/4" Luxfer | Quic-Loc | A | 2 | S | Yes |
| Sperian (Survivair) Panther | 30Min 4500 PSI | 5.4" D X 21-3/4" Luxfer | EZ-Loc Fixed Clamp | B | 2 | L | Yes |
| Sperian (Survivair) Panther | 45Min 4500 PSI | 6.25" D X 23" Luxfer | EZ-Loc Fixed Clamp | A | 2 | S | Yes |
| Sperian (Survivair) Panther | 45Min 4500 PSI | 6.75" D X 20-3/4" Luxfer | EZ-Loc Fixed Clamp | B | 2 | L | Yes |
| Sperian (Survivair) Panther | 60Min 4500 PSI | 6.85" D X 24-1/2" Luxfer | EZ-Loc Fixed Clamp | A | 2 | S | Yes |

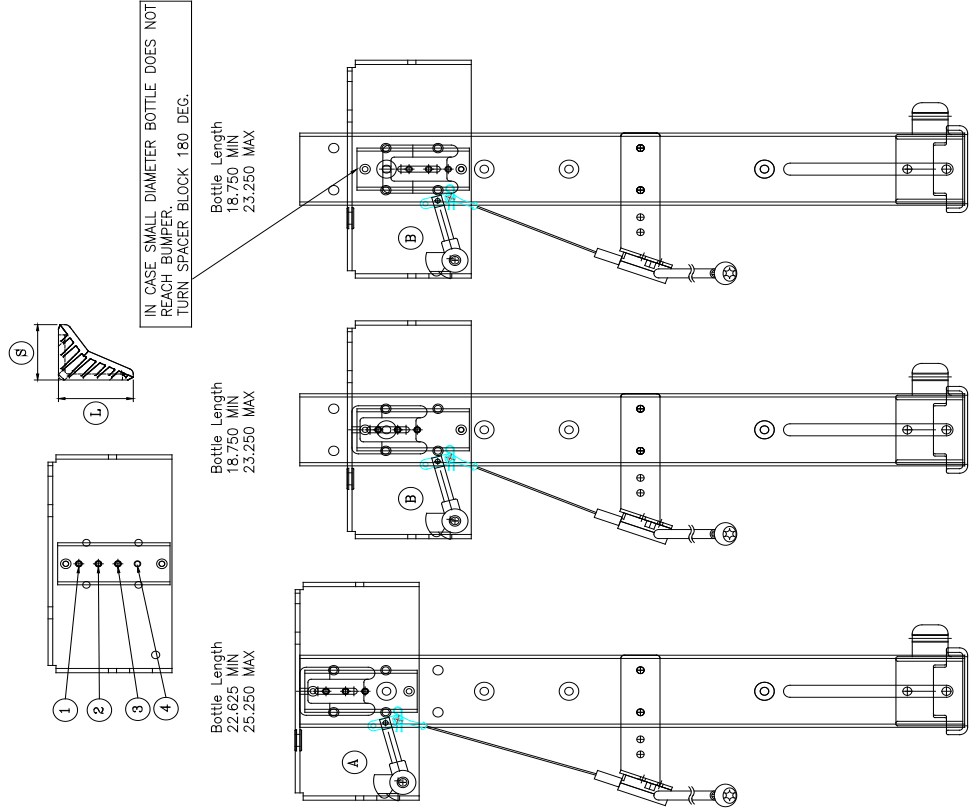
SCBA Fit in EZ-Loc Fixed Top-Clamp Brackets

| SCBA Brand, Model | AirCyl Type | AirCyl Dim | Bracket Model | Upper Bracket Location | Bumper Location | Bumper Position | Fit |
|-----------------------------|----------------------|-------------------------------------|-----------------------|------------------------|-----------------|-----------------|------|
| | | Inches | | A, B | 1,2,3 | S, L | Y, N |
| Survivair (Con't) | | | | | | | |
| Sperian (Survivair) Panther | 30Min 2216 PSI | 6-9/16" D X 23-1/4" Luxfer | Quic-Loc | A | 2 | S | Yes |
| Sperian (Survivair) Warrior | 30Min 4500 PSI | 5.4" D X 21-3/4" Luxfer | EZ-Loc Fixed Clamp | A | 3 | L | Yes |
| Sperian (Survivair) Warrior | 45Min 4500 PSI | 6.25" D X 23" Luxfer | EZ-Loc Fixed Clamp | A | 2 | S | Yes |
| Sperian (Survivair) Warrior | 45Min 4500 PSI | 6.75" D X 20-3/4" Luxfer | EZ-Loc Fixed Clamp | B | 3 | L | Yes |
| Sperian (Survivair) Warrior | 60Min 4500 PSI | 6.85" D X 24-1/2" Luxfer | EZ-Loc Fixed Clamp | B | 2 | L | Yes |

SCBA Fit in EZ-Loc Fixed Top-Clamp Brackets

| SCBA Brand, Model | AirCyl Type | AirCyl Dim | Bracket Model | Upper Bracket Location | Bumper Location | Bumper Position | Fit |
|--|----------------------|-------------------------------------|------------------|------------------------------|--------------------|--------------------|------|
| | | Inches | | A, B | 1,2,3 | S, L | Y, N |
| Survivair (Con't) | | | | | | | |
| Honeywell Sperian (Survivair) Panther | 30Min 2216 PSI | 6-9/16" D X 23-1/4" Luxfer | | | | | |
| Honeywell Sperian (Survivair) Panther | 30Min 4500 PSI | 5.4" D X 21-3/4" Luxfer | | | | | |
| Honeywell Sperian (Survivair) Panther | 45Min 4500 PSI | 6.25" D X 23" Luxfer | | | | | |
| Honeywell Sperian (Survivair) Panther | 45Min 4500 PSI | 6.75" D X 20-3/4" Luxfer | | | | | |
| Honeywell Sperian (Survivair) Panther | 60Min 4500 PSI | 6.85" D X 24-1/2" Luxfer | | | | | |
| | | | | | | | |
| | | | | | | | |

QLM-U ADJUSTMENT POSITIONS



- 1) BOTTLE SHOULD BE FITTED TO BRACKET AS PER INSTRUCTION.
- 2) BACK PLATE MOUNT TO SEAT SO FOOT PLATE IS LEVEL OR CLOSE AS POSSIBLE TO TOP OF SEAT CUSHION.