

EMS PRODUCTS GUIDE



ZICO
ZIAMATIC.COM

**SMARTER SOLUTIONS
FOR FIRST RESPONDERS**





OXYGEN TANK SYSTEM SOLUTIONS



OUR OXYGEN TANK SYSTEMS LIFT AND LOWER AN APPARATUS-MOUNTED GAS CYLINDER FOR QUICK AND EASY REPLACEMENT, SUBSTANTIALLY REDUCING THE RISK OF INJURY TO PERSONNEL.

MULTI-VERSAL BRACKET WITH HOOK STRAP AND QUICK RELEASE GATE

MODEL:
QR-MV-2

THE QR-MV-2 IS AN EASIER WAY TO STORE A CYLINDER WITH A NEW HOOK AND CAM BUCKLE COMBINATION.



SCAN FOR MORE INFORMATION.



OTS FOR ALUMINUM "M" CYLINDERS

MODELS:
QR-OTS-MR-A
QR-OTS-ML-A
QR-OTS-MR-A-HHS
QR-OTS-ML-A-HHS
QR-HSS/B



SCAN FOR MORE INFORMATION.



OTS - MOTOR ON RIGHT

MODEL:
QR-OTSR-U



SCAN FOR MORE INFORMATION.





OXYGEN TANK SYSTEM SOLUTIONS



OUR OXYGEN TANK SYSTEMS LIFT AND LOWER AN APPARATUS-MOUNTED GAS CYLINDER FOR QUICK AND EASY REPLACEMENT, SUBSTANTIALLY REDUCING THE RISK OF INJURY TO PERSONNEL.

OTS - MOTOR ON THE RIGHT WITH HAND-HELD SWITCH ▶

MODEL:
QR-OTSR-US



SCAN FOR MORE INFORMATION.



OTS - MOTOR ON THE LEFT ▶

MODEL:
QR-OTSL-U



SCAN FOR MORE INFORMATION.



◀ **OTS - MOTOR ON LEFT WITH HAND HELD SWITCH**

MODELS:
QR-OTSL-US



SCAN FOR MORE INFORMATION.





LARGER CYLINDER SOLUTIONS



WHY RISK BACK STRAIN OR INJURED FEET WHEN EXCHANGING MEDICAL OXYGEN CYLINDERS? OUR CYLINDER LIFTS TRANSPORT, RAISE, AND LOWER "M" THROUGH "J" CYLINDERS SO YOU CAN EASILY REMOVE THE EMPTY CYLINDER AND REPLACE IT WITH A FULL ONE.

VERTICAL OXYGEN CYLINDER LIFT

MODEL:
QR-CL

MAXIMUM LOAD: 200 LBS.
HEAVY-DUTY WHEELS ALLOW YOU TO SERVICE MULTIPLE AMBULANCES WITH A SINGLE UNIT. EACH UNIT OPERATES OFF OF A SUPPLIED 12V BATTERY. A WALL CHARGER IS PROVIDED.



SCAN FOR MORE INFORMATION.



SLIDE OUT FLIP-DOWN ASSEMBLY

MODEL:
QR-SOFD2

ZIAMATIC'S SLIDE OUT FLIP-DOWN ASSEMBLY MOUNTS UNDER BENCH/SQUAD SEATS FOR MAXIMUM USE OF AVAILABLE SPACE. ACCEPTS M-H CYLINDER SIZES. QR-MV CYLINDER BRACKET SOLD SEPARATELY.



SCAN FOR MORE INFORMATION.



SCAN FOR MORE INFORMATION.



SLIDE ASSEMBLY AND SLIDE ASSEMBLY WITH HINGE

MODELS:
QR-SA
QR-SAFD (PICTURED)

THESE PRODUCTS MOUNT EASILY UNDER THE AMBULANCE BENCH SEATS OR ANY OTHER APPROPRIATE HORIZONTAL COMPARTMENT AND ELIMINATE THE NEED TO RAISE A HEAVY CYLINDER UP AND OVER THE EDGE OF THE CYLINDER BRACKET.



SMARTER SOLUTIONS
FOR FIRST RESPONDERS



SMALLER CYLINDER SOLUTIONS



ZIAMATIC'S SMALLER CYLINDER SOLUTIONS OFFER EMS PERSONNEL EASY AND SAFE STORAGE AND RETRIEVAL OF OXYGEN CYLINDERS.

STRAPLESS "D" CYLINDER BRACKET ▶

**MODEL
QR-D-2**

WITH NO STRAPS AND NO HASSLES, THE QR-D-2 IS SIMPLE, AND SELF-LOCKING – BECAUSE EVERY SECOND COUNTS. THE BRACKET SECURES STANDARD, JUMBO, AND STEEL "D" GAS CYLINDERS. IT ACCOMMODATES MOST REGULATORS. THE BACKSPRING ENSURES A SNUG FIT WITH VIRTUALLY NO RATTLING. IT IS MADE OF A DURABLE STAINLESS STEEL CONSTRUCTION.



SCAN FOR MORE INFORMATION.



HORIZONTAL STRAPLESS "D" CYLINDER BRACKET ▶

**MODEL
QR-D-2/H**

WITH NO STRAPS AND NO HASSLES, THE QR-D-2/H IS, SIMPLE, AND SELF-LOCKING – BECAUSE EVERY SECOND COUNTS. THE BRACKET SECURES STANDARD, JUMBO, AND STEEL "D" GAS CYLINDERS. IT ACCOMMODATES MOST REGULATORS. THE BACKSPRING ENSURES A SNUG FIT WITH VIRTUALLY NO RATTLING. IT IS MADE OF A DURABLE STAINLESS STEEL CONSTRUCTION



SCAN FOR MORE INFORMATION.



STANDARD "D" CYLINDER BRACKET ▶

**MODEL
QR-D-1**

THIS HEAVY-DUTY STAINLESS STEEL BRACKET SECURES STANDARD "D" GAS CYLINDERS (JUMBO "D" WILL NOT FIT). SIMPLY PLACE THE CYLINDER IN THE BRACKET AND HOLD IT IN PLACE WITH THE STRAP PROVIDED. THE BRACKET HAS FOUR HOLES FOR MOUNTING.



SCAN FOR MORE INFORMATION.





SMALLER CYLINDER SOLUTIONS



ZIAMATIC'S SMALLER CYLINDER SOLUTIONS OFFER EMS PERSONNEL EASY AND SAFE STORAGE AND RETRIEVAL OF OXYGEN CYLINDERS.

STRAPLESS "E" CYLINDER BRACKETS

MODELS:

QR-E-1 (PICTURED)

QR-E-1/H (HORIZONTAL)

WITH NO STRAPS AND NO HASSLES, THE STRAPLESS E CYLINDER BRACKETS ARE FAST, SIMPLE, AND SELF-LOCKING – BECAUSE EVERY SECOND COUNTS. THEY SECURE STANDARD AND STEEL "E" GAS CYLINDERS AND ACCOMMODATE MOST REGULATORS.



SCAN FOR MORE INFORMATION.



5 LB. FIRE EXTINGUISHER BRACKET



SAFELY STORE A FIRE EXTINGUISHER INSIDE OR OUTSIDE OF THE CREW AREA WITH THIS SAE-J3043 COMPLIANT BRACKET.

THE BRACKET WAS DESIGNED, ENGINEERED, AND TESTED SPECIFICALLY FOR USE IN AMBULANCES AND OTHER MOVING VEHICLES, BETTER PROTECTING BOTH PATIENTS AND PERSONNEL.

A BAND CLAMP FIRMLY HUGS THE CYLINDER WITH VIRTUALLY NO RATTLE. THE QUICK-RELEASE BUCKLE ALLOWS FOR FAST AND EASY ACCESS TO THE EXTINGUISHER.

THE SPECIALLY-DESIGNED PULL PIN ENSURES THE LATCH STAYS CLOSED FOR MAXIMUM CYLINDER SECURITY. SOFT FOAM PADS PROTECT AND CUSHION THE CYLINDER.

MODELS

QR-FEH-1-A:
FOR USE WITH AMEREX B402 & AMEREX B500

QR-FEH-1-B:
FOR USE WITH BADGER 5MB-6H

QR-FEH-1-K:
FOR USE WITH KIDDE PRO SERIES 340

QR-FEH-1-S:
FOR USE WITH SENTRY AA05S-1

QR-FEH-1-F:
FOR USE WITH FIRST ALERT #FE3A40GR



SCAN FOR MORE INFORMATION.





RETRACTABLE VEHICLE STEPS AND NEW HOOK STRAPS



ZIAMATIC'S RETRACTABLE VEHICLE STEPS ARE POWERED BY A 12 VOLT ELECTRIC ACTUATOR WITH A PATENTED IN-LINE LOCKING MECHANISM TO HOLD THE STEPS RIGIDLY IN PLACE.

RETRACTABLE VEHICLE STEP 7-5/8" DROP

MODEL
VS-24-9

THIS MODEL HAS A SHORTER DROP HEIGHT THAN THE VS-24-11 AND IS IDEAL FOR AMBULANCES. POWERED BY A 12V ELECTRIC ACTUATOR WITH A PATENTED IN-LINE LOCKING MECHANISM TO HOLD STEP RIGIDLY IN PLACE.



SCAN FOR MORE INFORMATION.



RETRACTABLE VEHICLE STEP 10-1/2" DROP

MODEL:
VS-24-11

THIS MODEL FEATURES A LARGE STEPPING SURFACE, WHICH IS IDEAL FOR FIRE APPARATUS. IT IS POWERED BY A 12V ELECTRIC ACTUATOR WITH A PATENTED IN-LINE LOCKING MECHANISM TO HOLD THE STEP RIGIDLY IN PLACE.



SCAN FOR MORE INFORMATION.



HOOK STRAPS (WITH CAM BUCKLE)

MODEL:
3030-135-147

ZIAMATIC'S NEW HOOK STRAP MAKES SECURING CYLINDERS EASY WITH A NEW HOOK AND CAM BUCKLE COMBINATION. SIMPLY PRESS ON THE CAM BUCKLE TO LOOSEN OR TIGHTEN THE HEAVY DUTY 2- INCH STRAP.



SCAN FOR MORE INFORMATION.



SMARTER SOLUTIONS FOR FIRST RESPONDERS



WHEEL CHOCS AND TOOL MOUNTS



ZIAMATIC'S WHEEL CHOCS ARE MADE OF HIGH TENSILE STRENGTH ALUMINUM RIGHT HERE IN THE USA. OUR **SURE-GRIP TOOL MOUNTS** ARE AMONG THE STRONGEST AVAILABLE ON THE MARKET.

MEDIUM WHEEL CHOC

MODEL:
AC-1

RECOMMENDED FOR USE WITH SMALLER TIRES, SUCH AS THOSE ON CARS, PICKUP TRUCKS, AND TOW TRAILERS. **MADE IN THE U.S.A.**



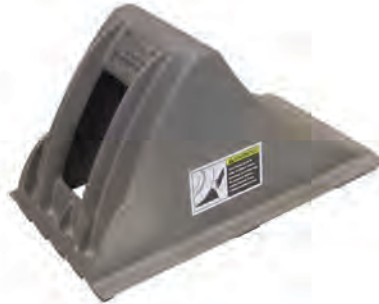
SCAN FOR MORE INFORMATION.



WHEEL CHOC FOR TIRES UP TO 32"

MODEL
AC-32

LARGE REAR-OPENING HAND GRIP FOR EASY TRANSPORT AND PLACEMENT. DOUBLE ROW OF RUGGED TEETH GRIP VIRTUALLY ANY FIRM SURFACE. **NFPA/SAEJ348 COMPLIANT** AND THIRD-PARTY TESTED. **MADE IN THE U.S.A.**



SCAN FOR MORE INFORMATION.



SURE-GRIP TOOL AND EQUIPMENT MOUNTS

OUR **SURE-GRIP** PRODUCT LINE OFFERS THE NEWEST AND STRONGEST FEATURES IN TOOL RETENTION. IT FEATURES THE HEAVY-DUTY, ALL-WEATHER HOOK AND LOOP STRAPS THAT HAVE SECURED TOOLS AND EQUIPMENT FOR OVER **20 YEARS**.

SOME OF THE TOUGHEST STRAPS IN THE INDUSTRY ARE PAIRED WITH A SUPER STRONG NYLON BODY THAT DOES NOT CRACK, BREAK, OR SEE PERMANENT DEFLECTION. CHOOSE FROM ONE OF OUR **SURE-GRIP** PRODUCTS WHEN YOU VISIT OUR PRODUCT PAGE BY SCANNING THE CODE TO THE RIGHT.



SG MODELS

SURE-GRIP
SURE-GRIP XL
SURE-GRIP XLS
ADJUSTABLE
SURE-GRIP
SURE-GRIP 275



SCAN FOR MORE INFORMATION.



SMARTER SOLUTIONS FOR FIRST RESPONDERS



SLIDE OUT AND DOWN VEHICLE LADDERS



ZIAMATIC'S VEHICLE LADDERS ARE BUILT TO ORDER AND MADE TO LAST. STORE THE LADDERS PARALLEL TO THE VEHICLE BODY. RELEASE THE LOCKING HANDLE AND PULL THE LADDER OUT TO A COMFORTABLE CLIMBING ANGLE WHEN NEEDED.

SWING OUT AND DOWN VEHICLE LADDERS

ORDERS CUSTOMIZED TO SUIT YOUR NEEDS

3" DEEP CAST ALUMINUM RUNGS HAVE A FLAT, NON-SKID SURFACE FOR TRACTION AND SAFETY. HANDRAILS ARE 1-1/4" HEAVY-WALLED ALUMINUM TUBING, COVERED IN A ROUGH-GRIP BLACK POWDER-COAT.



RESCUE LADDER INDICATOR SWITCH

MODELS
RL-IS

BE CONFIDENT YOUR LADDER IS LOCKED IN ITS STOWED POSITION WITH OUR RESCUE LADDER INDICATOR SWITCH. IT CAN BE WIRED TO AN ALARM OR INDICATOR LIGHT TO ALERT YOUR CREW THAT THE LADDER IS DEPLOYED, NOT SAFELY STOWED.



SCAN FOR MORE INFORMATION.



SCAN FOR MORE INFORMATION.

RAIL RETENTION KIT

MODEL

3096-005-905

WHEN MOUNTING THE LOCKING HANDLE TO THE SIDE OF THE LADDER, THIS PROTECTIVE SLEEVE GUARDS THE RAIL COATING AGAINST ADDITIONAL WEAR AND TEAR.



SCAN FOR MORE INFORMATION.



SMARTER SOLUTIONS FOR FIRST RESPONDERS



STRAPS AND MOUNTING SYSTEMS



A COST EFFECTIVE WAY TO SECURE FIRE EXTINGUISHERS, WATER CANS, MEDICAL OXYGEN, SCBA AND SCUBA, WATER COOLERS, FLARE CONTAINERS AND OTHER CYLINDRICAL EQUIPMENT.

CYLINDER MOUNTING SYSTEM - COMPLETE

MODELS:

- CYBM-1213-40-11, CYBM-1315-45-11
- CYBM-1516-50-11, CYBM-1618-55-11
- CYBM-1820-60-11, CYBM-2123-70-11
- CYBM-2426-80-11, CYBM-2627-85-11
- CYBM-2729-90-11



SCAN FOR MORE INFORMATION.

A COST EFFECTIVE WAY TO SECURE FIRE EXTINGUISHERS, WATER CANS, MEDICAL OXYGEN, SCBA AND SCUBA, WATER COOLERS, FLARE CONTAINERS AND OTHER CYLINDRICAL EQUIPMENT.

CYLINDER MOUNTING SYSTEM BASE STRAPS

MODELS:

- CYBS-1213-40-11, CYBS-1315-45-11
- CYBS-1516-50-11, CYBS-1618-55-11
- CYBS-1820-60-11, CYBS-2123-70-11
- CYBS-2426-80-11, CYBS-2627-85-11
- CYBS-2729-90-11



SCAN FOR MORE INFORMATION.

A COST EFFECTIVE WAY TO SECURE FIRE EXTINGUISHERS, WATER CANS, MEDICAL OXYGEN, SCBA AND SCUBA, WATER COOLERS, FLARE CONTAINERS AND OTHER CYLINDRICAL EQUIPMENT. THIS CAN BE USED IN CONJUNCTION WITH AN ALUMINUM BASE MOUNT EXTRUSION, MODEL ABM-1, TO MAKE A COMPLETE SYSTEM.



VARIABLE MALE BUCKLE STRAPS

MODELS:

- VS-1-12, VS-1-24
- VS-1-36, VS-1-48
- VS-1-72, VS-1-96
- VS-1-120



SCAN FOR MORE INFORMATION.

FIXED FEMALE BUCKLE STRAPS

MODELS:

- FS-1-3, FS-1-6
- FS-1-12, FS-1-24
- FS-1-36, FS-1-48
- FS-1-72

THESE VERSATILE BUCKLE STRAPS ARE GREAT FOR HOSE BEDS, LARGE TOOLS, CRIBBING, COFFIN COMPARTMENTS, TOOL BOXES, AND MORE. THE FIXED AND VARIABLE SIDES CAN BE MIXED & MATCHED TO CREATE WHICHEVER COMBINATION WORKS BEST FOR YOUR NEEDS.



SCAN FOR MORE INFORMATION.

THESE BUCKLE STRAPS ARE GREAT FOR HOSE BEDS, LARGE TOOLS, CRIBBING, COFFIN COMPARTMENTS, TOOL BOXES, AND MORE. THE FIXED AND VARIABLE SIDES CAN BE MIXED & MATCHED TO CREATE A COMBINATION THAT WORKS BEST FOR YOUR NEEDS.



STRAPS AND MOUNTING SYSTEMS



A COST EFFECTIVE WAY TO SECURE FIRE EXTINGUISHERS, WATER CANS, MEDICAL OXYGEN, SCBA AND SCUBA, WATER COOLERS, FLARE CONTAINERS AND OTHER CYLINDRICAL EQUIPMENT.

UTILITY MOUNTING SYSTEM 1" VARIABLE STRAPS

MODELS:

UMVS-1-14, UMVS-1-18

UMVS-1-22, UMVS-1-26

OUR POPULAR STRAPS ARE NOW AVAILABLE IN A NEW 1" WIDTH! THEY ARE THE IDEAL CHOICE FOR SECURING SMALLER EQUIPMENT, SHELF SLOTS, AND COMPARTMENT CUBBY-HOLES.



SCAN FOR MORE INFORMATION.

UTILITY MOUNTING SYSTEM 2" FIXED STRAPS

MODELS:

UMFS-0311, UMFS-0511, UMFS-0711

UMFS-0911, UMFS-1111, UMFS-1311

UMFS-1511, UMFS-1711, UMFS-1911

UMFS-2111, UMFS-2311, UMFS-2511

UMFSCS-0325-11 (COMPLETE SET OF 3" - 25" FIXED STRAPS)

2" WIDE HEAVY-DUTY, ALL-WEATHER NYLON CONSTRUCTION. HIGH-STRENGTH PLASTIC "D" RINGS ON EACH END PROVIDE INCREDIBLE HOLDING POWER.



SCAN FOR MORE INFORMATION.

UTILITY MOUNTING SYSTEM 2" VARIABLE STRAPS

MODELS:

UMVS-0565-11, UMVS-0811-11

UMVS-1116-11, UMVS-1625-11

UMVS-2544-11, UMVSCS-0544-11

2" WIDE HEAVY-DUTY, ALL-WEATHER NYLON CONSTRUCTION. A HOOK AND LOOP CLOSURE SYSTEM THAT PROVIDES EXTRAORDINARY HOLDING POWER. THE STRAP DOUBLES BACK ON ITSELF THROUGH THE "D" RING TO DOUBLE THAT HOLDING POWER.



SCAN FOR MORE INFORMATION.



Zico
ZIAMATIC.COM

**SMARTER SOLUTIONS
FOR FIRST RESPONDERS**

Scan here to view
a digital version
of this catalog.

