

# **MULTIPLE EXTRICATION TOOL HOLDERS MODELS QM-MEH-1 & QM-MEH-1-R PARTS AND INFORMATION MANUAL**

## **I. MODELS AVAILABLE**

QM-MEH-1: Multiple Extraction Tool Holder

QM-MEH-1-R: Multiple Extraction Tool Holder w/Optional Ram Mount

## **II. BASE ASSEMBLY**

1. Attach Base Plate Brackets (17) onto the Tool Base Plate (16) as shown using the fasteners provided (see Figure 3, page 10). Set Tool Base Plate aside.
2. On each side of the Column (7), towards the bottom, locate the pair of screws (see Figure 4, page 13). Remove two pairs of screws on opposite sides of the Column. Four screws total.
3. Slide the Tool Base Plate over the Column so that the holes in the Base Plate Brackets align with the now empty holes at bottom of the Column (see Figure 4, page 13). Attach Tool Base Plate to Column using fasteners provided (see Figure 5A, page 14). Tighten.
4. Attach Cap/Plug (11) to top of Column. Attach Tee Handle (13) to Release Rod (8).

## **III. BRACKET BOX MOUNTING**

1. For sides utilizing a Tool Hanging Bracket (18), attach Bracket Box to Tool Base Plate (16) using horizontally-aligned screw holes and fasteners provided (see Figure 5A, page 14). Box components may be slid in and out to better fit the tips/blades of the desired tool to be stored.

For sides utilizing a Hanging Ram Assembly (50), attach Bracket Box to Tool Base Plate using vertically-aligned screw hole fasteners provided (see Figure 5B, page 15). Box components may be slid in and out to better fit the size of the ram to be stored.

2. Place Pad (36) at bottom of Bracket Box.
3. Secure Rubber Strap (22) to Bracket Box using fasteners provided (see Figure 1A, page 4 & Figure 5A, page 14). There should be firm downward tension when the Rubber Strap Handle (21) is hooked to the handle of the extrication tool (see Figure 5C, page 16).
4. Repeat steps for each extrication tool/ram you wish to mount.

#### IV. HANGING BRACKET MOUNTING

*Note 1: Due to the weight of extrication tools, this step will require two or more people. Before beginning, familiarize yourself with Figure 5B, page 15.*

*Note 2: The two screws at the top of each Column (7) side can be removed to allow for higher mounting of the Tool Hanging Bracket (18). If utilizing this option, **remove only 1 pair of screws (1 side) at a time** to keep inner parts in proper position.*

1. Hold one Tool Hanging Bracket against one side of the Column.
2. With assistance, lift the extrication tool to be mounted into position and let the tips/blades rest against the bottom of the Bracket Box.
3. With extrication tool resting against the Bracket Box, slide the Tool Hanging Bracket up or down the Column until the handle of the extrication tool is resting firmly inside and against the bracket catch. Mark the position of the Tool Hanging Bracket and note most convenient screw holes. Remove extrication tool.
4. Using your markers and the screw holes provided, attach Tool Hanging Bracket to Column using provided fasteners (see Figure 1A, page 4, Figure 5B, page 15, & Figure 5C, page 16). Tighten.
5. Tool should now sit securely in Tool Hanging Bracket and Bracket Box without assistance. Adjust fit as needed.
6. Repeat steps for each extrication tool you wish to mount.

#### V. RAM BRACKET MOUNTING

*Note 1: Before beginning, familiarize yourself with Figure 5B, page 15.*

*Note 2: The two screws at the top of each Column (7) side can be removed to allow for higher mounting of the Ram Hanging Bracket (50). If utilizing this option, **remove only 1 pair of screws (1 side) at a time** to keep inner parts in proper position.*

1. Hold Ram Hanging Bracket against one side of the Column.
2. Place the ram to be stored into the Bracket Box.
3. With the ram resting in the Bracket Box, slide the Ram Hanging Bracket up or down the Column until nylon strap is in the proper position to adequately support the upper half of the tool. Mark the position of the Ram Hanging Bracket and note most convenient screw holes. Remove arm.

4. Using your markers and the screw holes provided, attach Ram Hanging Bracket to Column using provided fasteners (see Figure 1B, page 6, Figure 5B, page 15 & Figure 5C, page 16). Tighten.
5. When strapped in place, ram should now sit securely in Ram Hanging Bracket and Bracket Box without assistance. Adjust fit as needed.

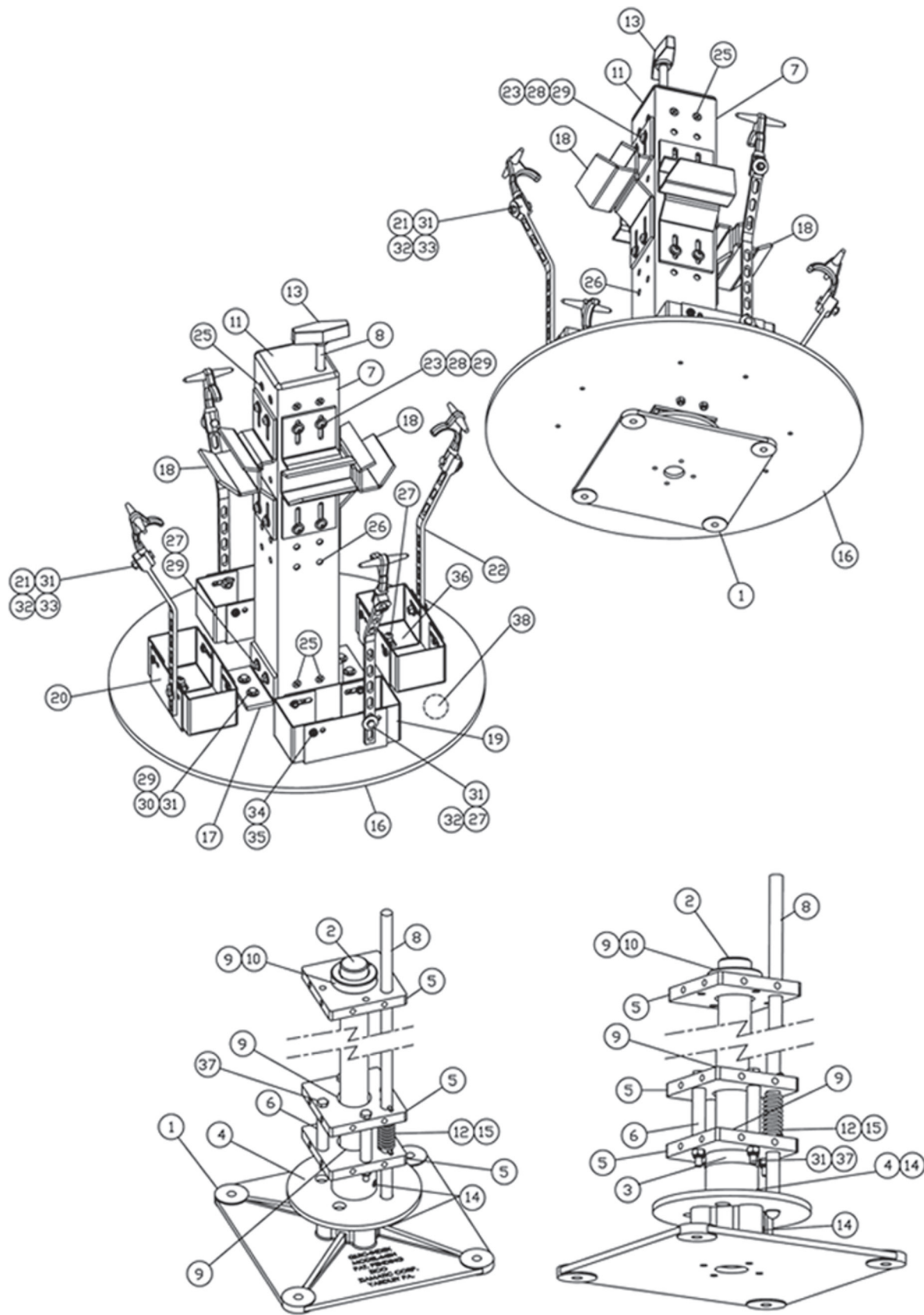
## **VI. APPARATUS INSTALLATION**

Using holes in Base Casting (1) as a guide, mount Base Casting to compartment using 3/8" dia. hardware (not provided).

## **VII. OPERATION**

The Multiple Extrication Tool Holder is designed to rotate and lock into four, 90-degree positions.

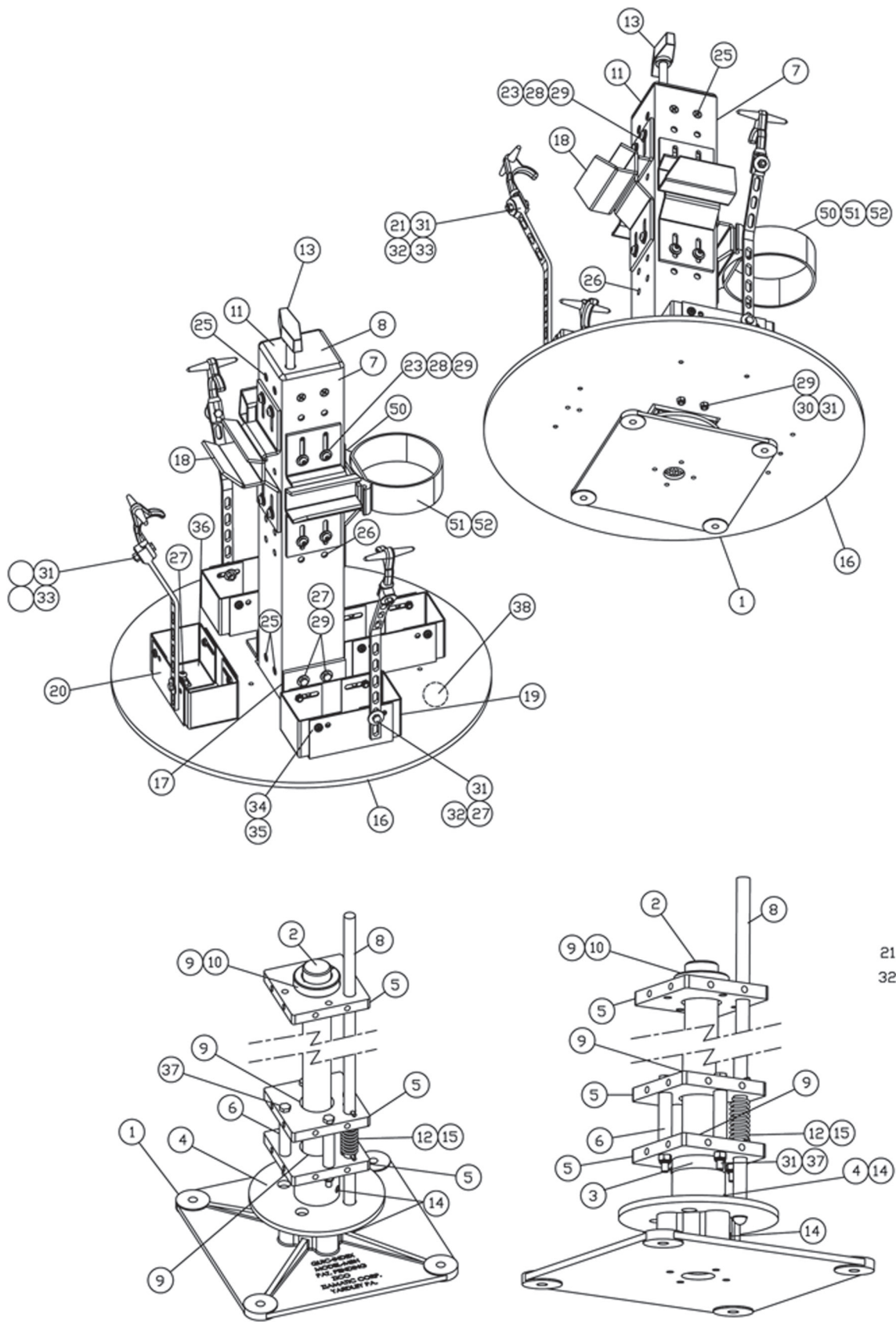
To rotate, lift the Tee Handle (13) and rotate the tools in either the clockwise or counter-clockwise direction until reaching the tool you wish to access. Release the Tee Handle and the Release Rod (8) will drop into the nearest locking hole to secure the unit.



**FIGURE 1A: MODEL QM-MEH-1**

ITEM NO.	PART NO.	DESCRIPTION	QTY.
1	1035-105-105	BASE CASTING	1
2	3095-260-101	POST 1-1/4 DIA.	1
3	3095-260-103	2 OD X 1-9/32 ID X 1/2 NYLON 6-6 SPACER	1
4	3095-260-105	INDEXED PLATE	1
5	3095-260-107	INNER BEARING PLATE	3
6	3095-260-109	PLATE SPACER	4
7	3095-260-111	COLUMN	1
8	3095-260-113	RELEASE ROD	1
9	1035-105-145	BEARING	3
10	1035-105-150	COLLAR	1
11	3095-260-115	CAP/PLUG	1
12	3095-260-117	SPRING	1
13	3095-260-119	TEE HANDLE	1
14	9040-103132	SPRING PIN 5/16 DIA X 2" LG.	2
15	9040-101516	SPRING PIN 5/32 DIA X 1" LG.	2
16	3095-260-121	TOOL BASE PLATE	1
17	3095-260-123	BASE PLATE BRACKET	2
18	3095-260-901	HANGING ASSEMBLY	4
19	3095-150-110	SLEDGE BRACKET END PIECE	8
20	3095-150-105	SLEDGE BRACKET MAIN PIECE	4
21	3095-215-109	STRAP HANDLE	4
22	3095-215-107	EPDM RUBBER STRAP	4
23	9010-502512	SCREW 1/4-20 X 3/4 LG. TORX HEAD BUTTON HD. ZPS	16
25	9110-162512	SCREW 1/4-20 X 3/4 LG. FL. HD. 100 C'SUNK	12
26	9012-272500	NUT INSERT, 1/4-20	64
27	9010-102512	SCREW 1/4-020 X 3/4 LG. HEX HEAD ZPS	16
28	9014-202500	1/4" LOCK WASHER	16
29	9014-112500	1/4" FLAT WASHER	24
30	9010-102516	SCREW 1/4-20 X 1 LG. HEX HEAD ZPS	4
31	9015-172500	NYLOCK NUT 1/4-20 ZPS GR5	16
32	9014-162500	WASHER, 1/4" WIDE	8
33	9015-102520	SCREW 1/4-20 X 1-1/4 LG. HEX HEAD ZPS	4
34	9110-212506	SCREW 1/4-20 X 3/8 LG. SLOT PAN S.S.	12
35	9013-172500	NYLOCK NUT 1/4-20 ZPS LO-PROFILE	12
36	3095-150-115	PAD, SLEDGE BRACKET	4
37	9010-102556	SCREW 1/4-20 X 3-1/2 LG. HEX HEAD ZPS	4
38	0000-000-149	SERIAL NUMBER TAG	1

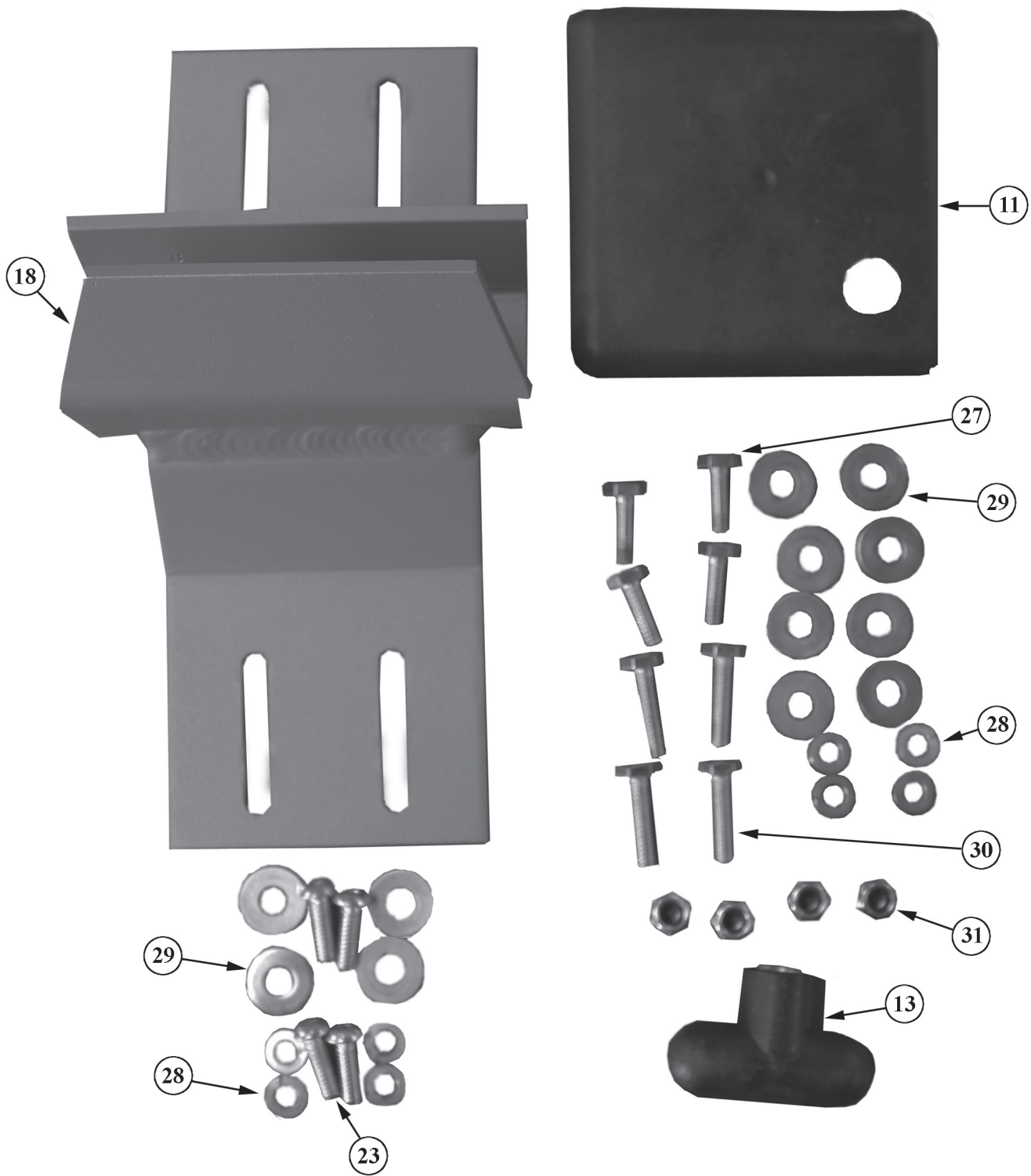
### PARTS LIST: MODEL QM-MEH-1



**FIGURE 1B: MODEL QM-MEH-1-R**

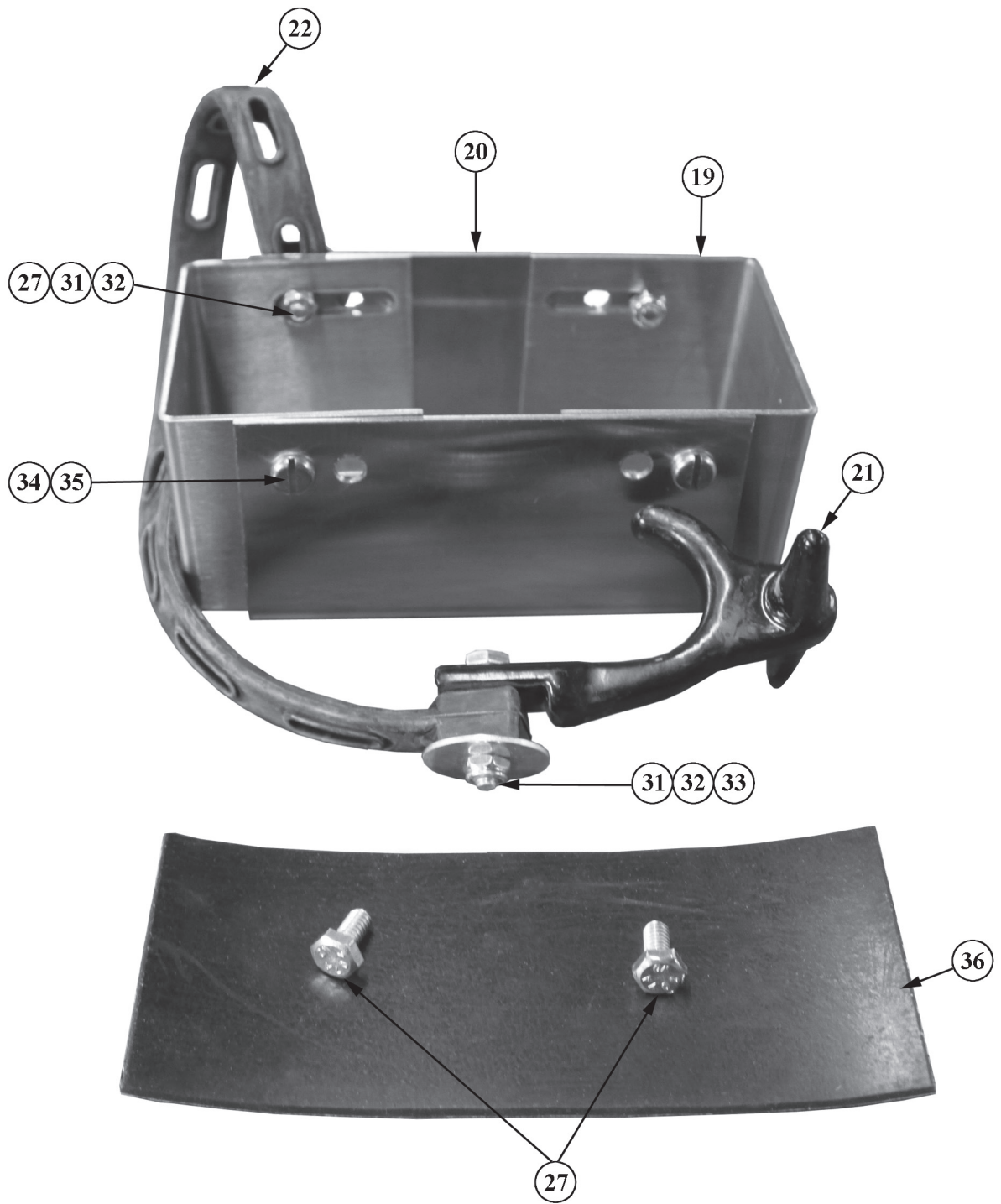
ITEM NO.	PART NO.	DESCRIPTION	QTY.
1	1035-105-105	BASE CASTING	1
2	3095-260-101	POST 1-1/4 DIA.	1
3	3095-260-103	2 OD X 1-9/32 ID X 1/2 NYLON 6-6 SPACER	1
4	3095-260-105	INDEXED PLATE	1
5	3095-260-107	INNER BEARING PLATE	3
6	3095-260-109	PLATE SPACER	4
7	3095-260-111	COLUMN	1
8	3095-260-113	RELEASE ROD	1
9	1035-105-145	BEARING	3
10	1035-105-150	COLLAR	1
11	3095-260-115	CAP/PLUG LDPE	1
12	3095-260-117	SPRING	1
13	3095-260-119	TEE HANDLE	1
14	9040-103132	SPRING PIN 5/16 DIA X 2" LG.	2
15	9040-101516	SPRING PIN 5/32 DIA X 1" LG.	2
16	3095-260-121	TOOL BASE PLATE	1
17	3095-260-123	BASE PLATE BRACKET	2
18	3095-260-901	HANGING ASSEMBLY	3
19	3095-150-110	SLEDGE BRACKET END PIECE	8
20	3095-150-105	SLEDGE BRACKET MAIN PIECE	4
21	3095-215-109	STRAP HANDLE	3
22	3095-215-107	EPDM RUBBER STRAP	3
23	9010-502512	SCREW 1/4-20 X 3/4 LG. TORX HEAD BUTTON HD. ZPS	16
25	9110-162512	SCREW 1/4-20 X 3/4 LG. FL. HD. 100 C'SUNK	12
26	9012-272500	NUT INSERT, 1/4-20	64
27	9010-102512	SCREW 1/4-20 X 3/4 LG. HEX HEAD ZPS	16
28	9014-202500	1/4" LOCK WASHER	16
29	9014-112500	1/4" FLATWASHER	24
30	9010-102516	SCREW 1/4-20 X 1 LG. HEX HEAD ZPS	4
31	9015-172500	NYLOCK NUT 1/4-20 ZPS GR5	14
32	9014-162500	WASHER, 1/4" WIDE	6
33	9015-102520	SCREW 1/4-20 X 1-1/4 LG. HEX HEAD ZPS	4
34	9110-212506	SCREW 1/4-20 X 3/8 LG. SLOT PAN S.S.	12
35	9013-172500	NYLOCK NUT 1/4-20 ZPS LO-PROFILE	12
36	3095-150-115	PAD, SLEDGE BRACKET	4
37	9010-102556	SCREW 1/4-20 X 3-1/2 LG. HEX HEAD ZPS	4
38	0000-000-149	SERIAL NUMBER TAG	1
50	3095-265-901	HANGING ASSY RAM OPT.	1
51	3099-343-105	CYBS SERIES STRAP 37 1/2"	1
52	3099-000-006	1" ABM D RING	2

### PARTS LIST: MODEL QM-MEH-1-R



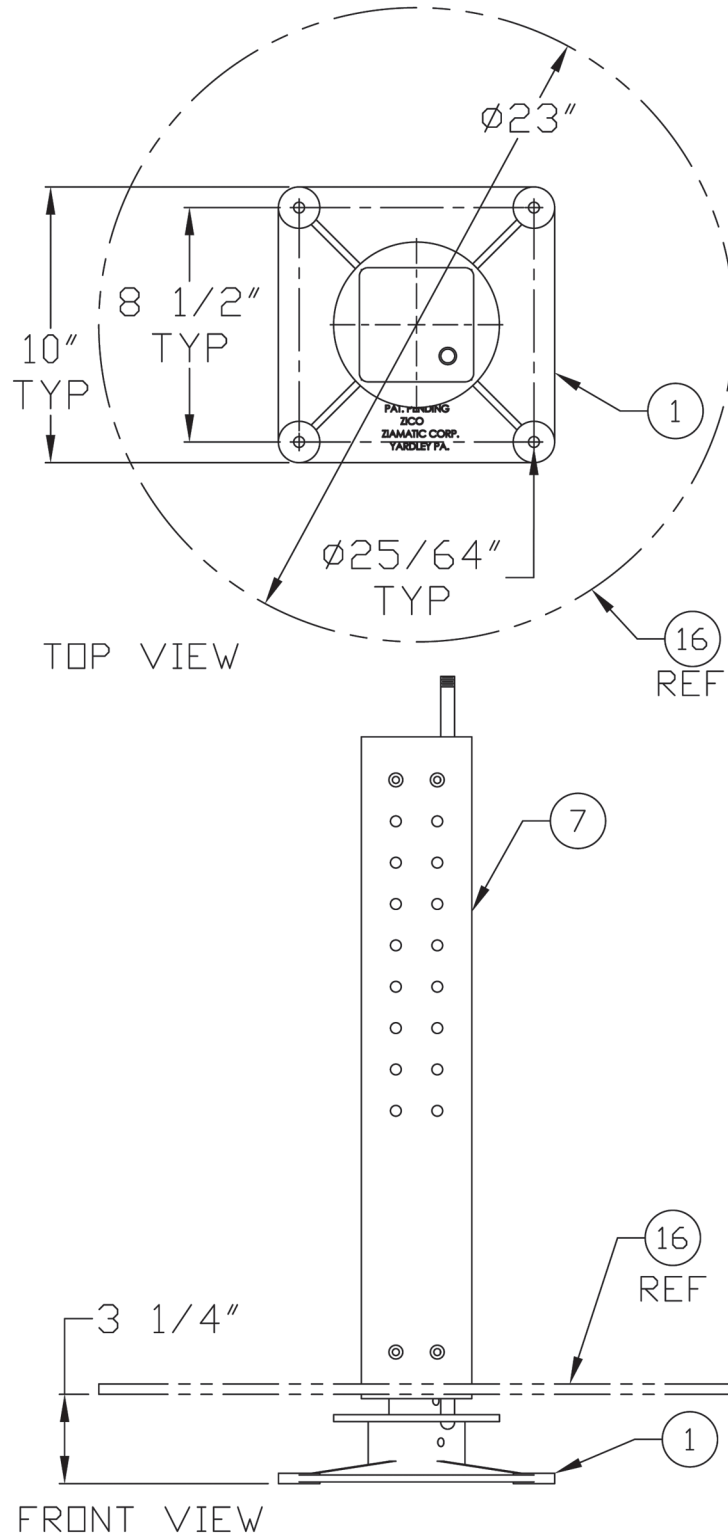
**FIGURE 1C:  
COLUMN COMPONENTS**



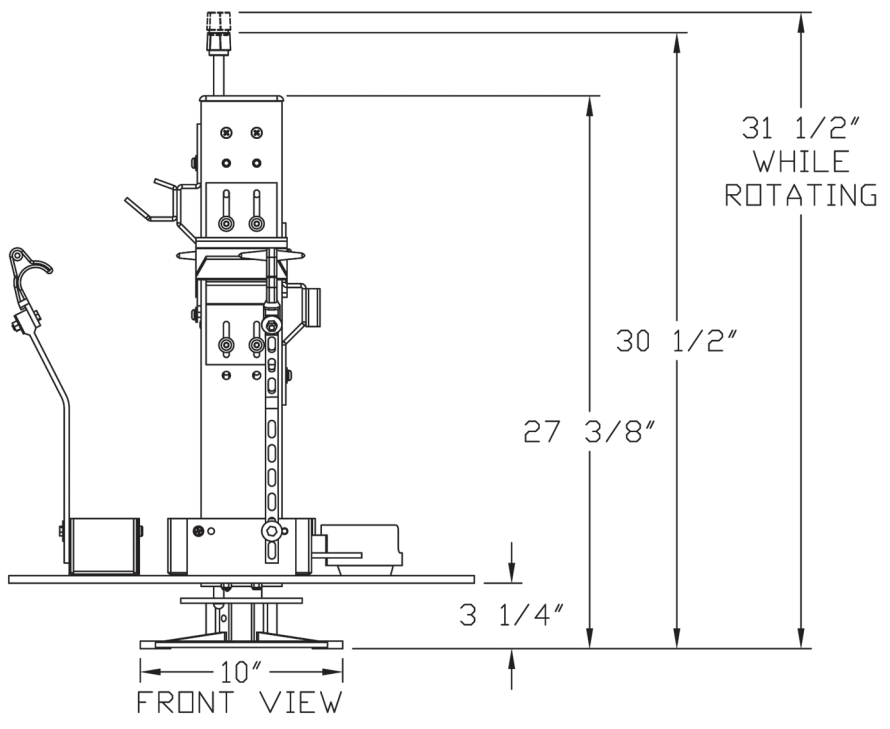
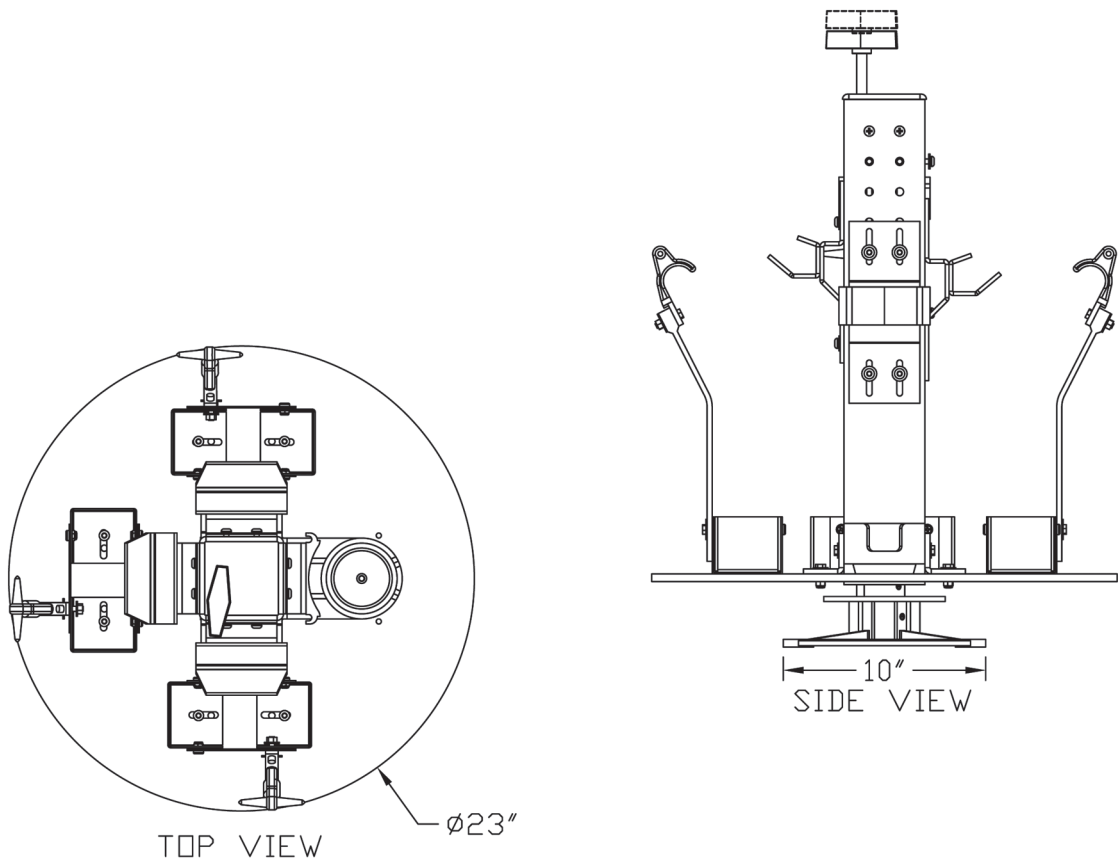


**FIGURE 1D:  
BRACKET BOX ASSEMBLY**

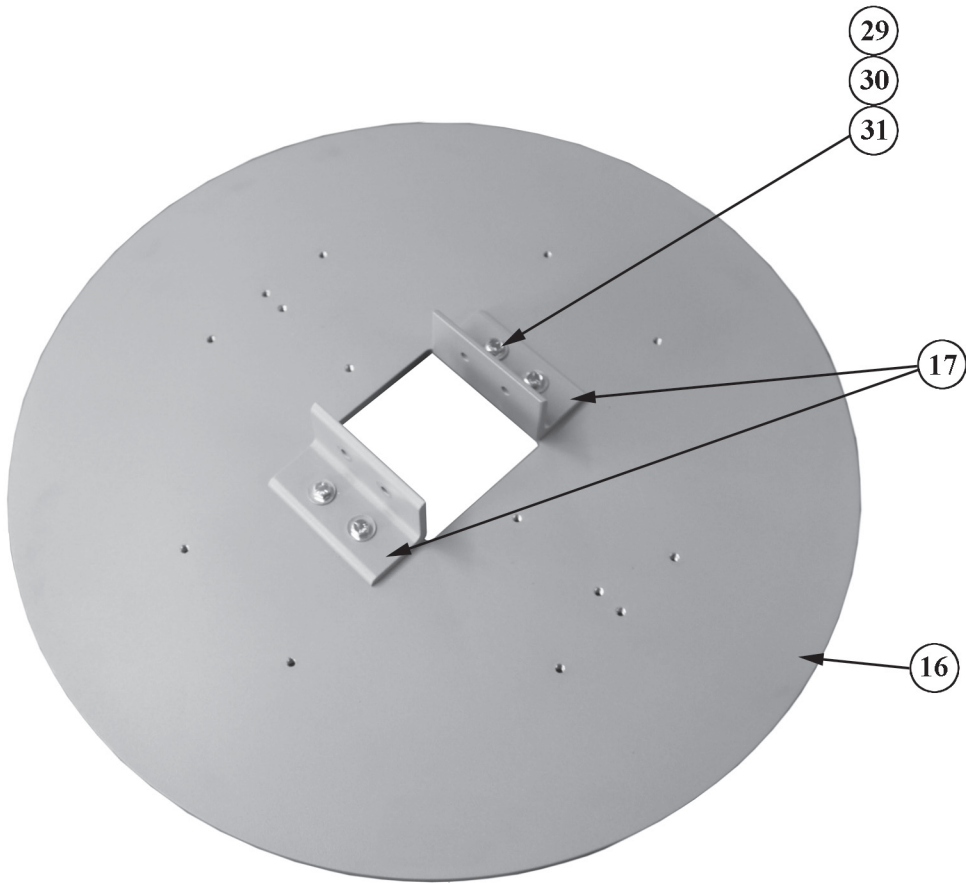
# COLUMN AND BASE SUB ASSEMBLY



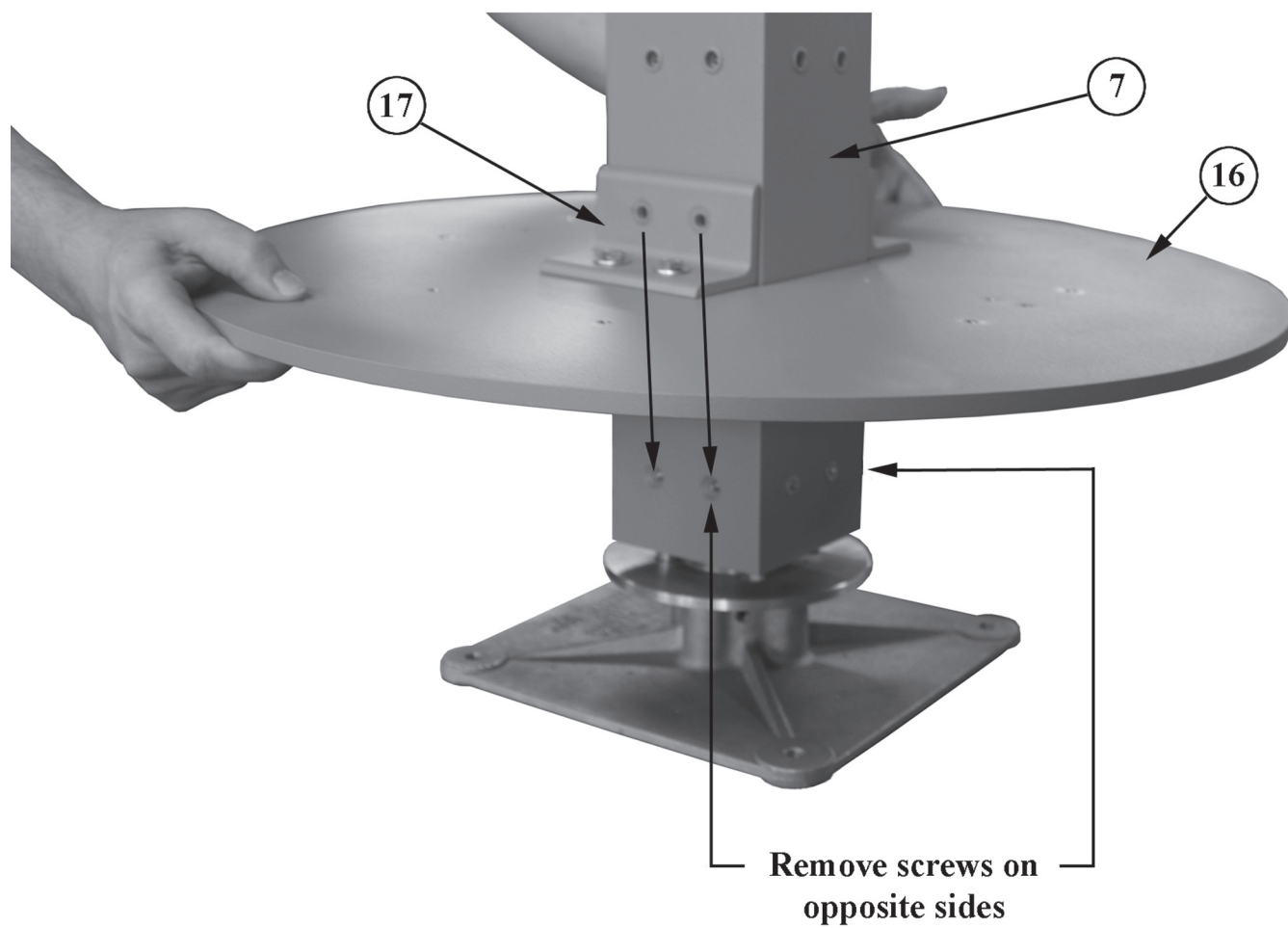
**FIGURE 2A**



**FIGURE 2B**

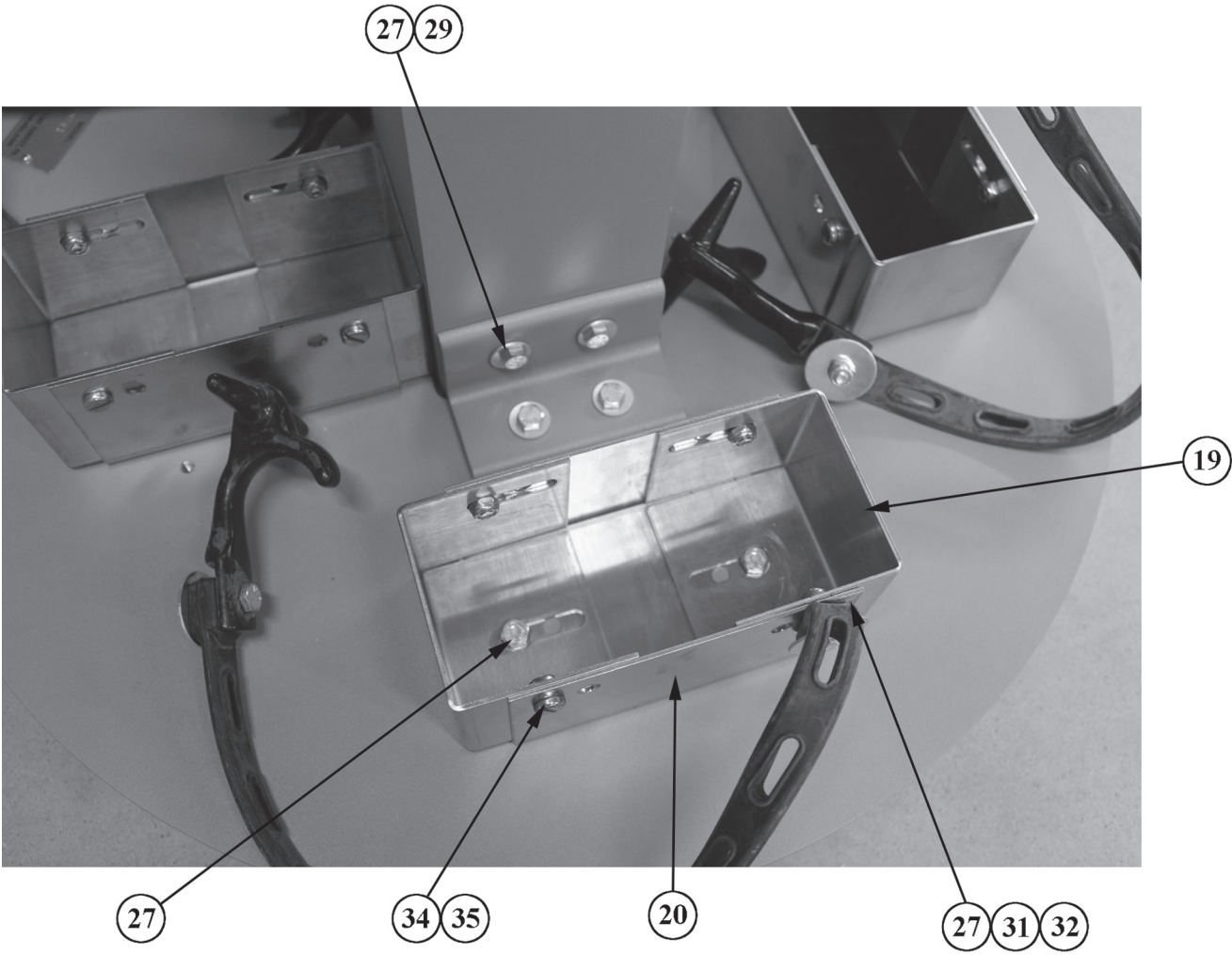


**FIGURE 3:  
TOOL BASE PLATE ASSEMBLY**

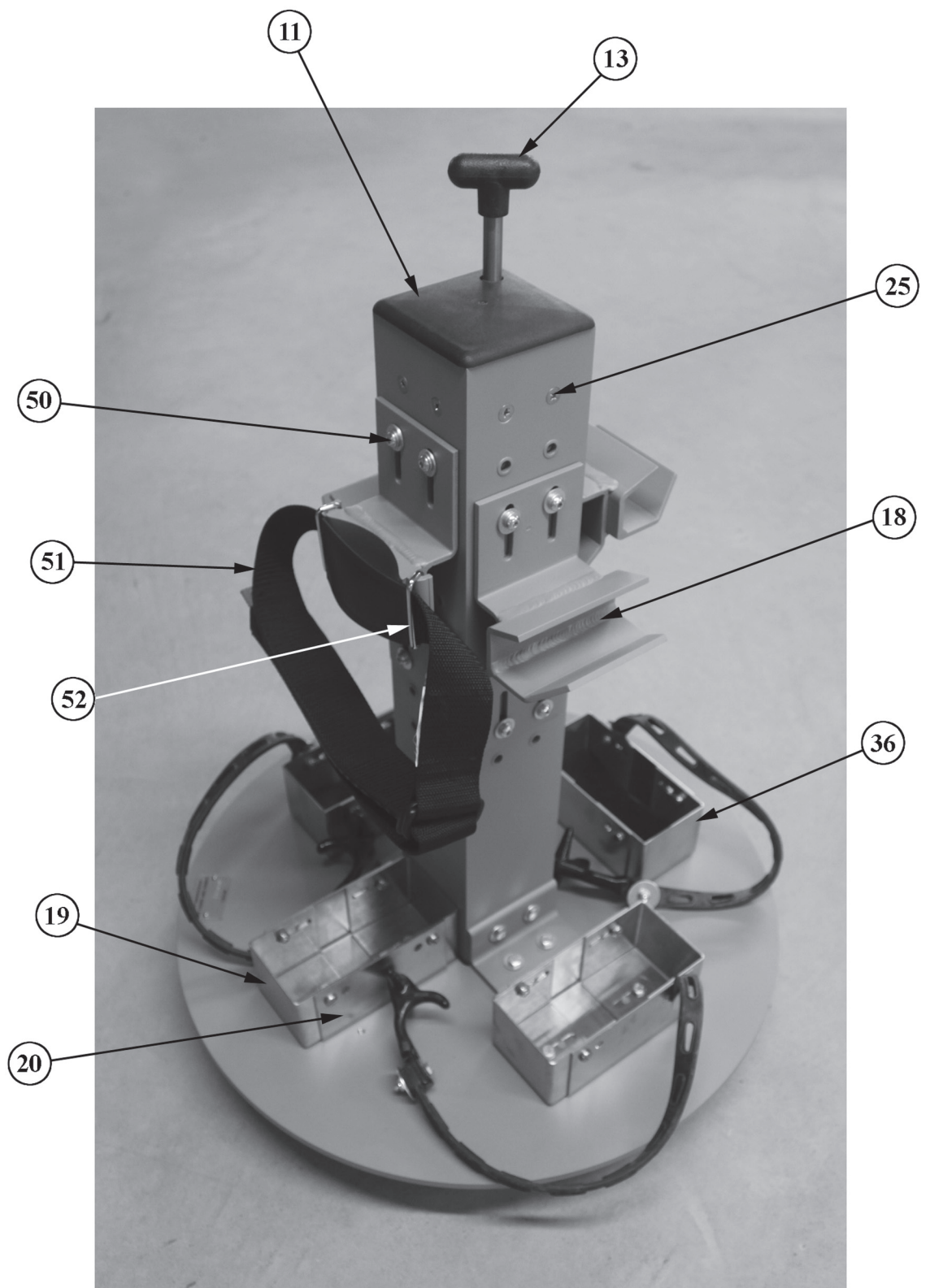


**Important: These Positions Only**

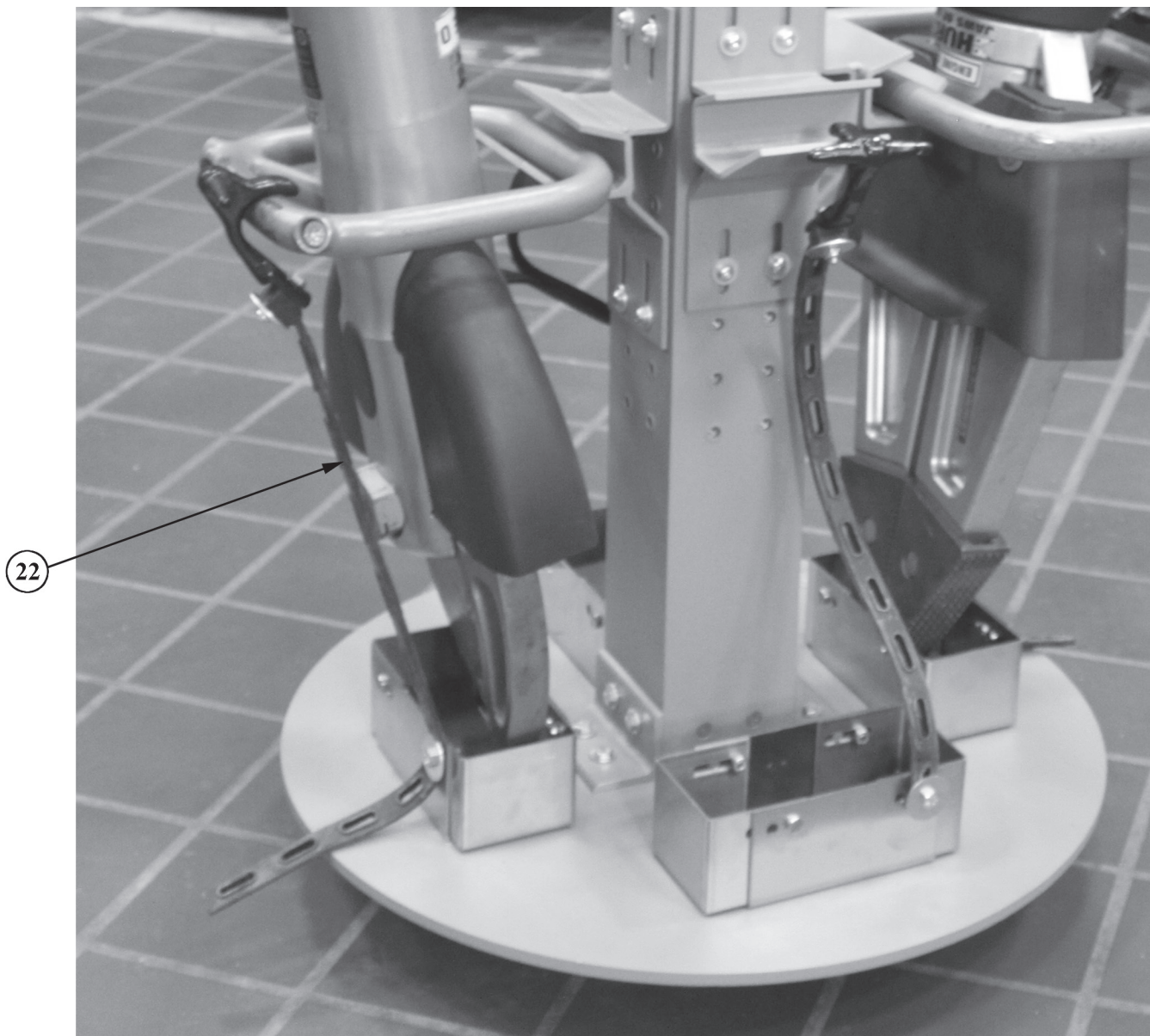
**FIGURE 4:  
BASE ASSEMBLY**



**FIGURE 5A:  
BRACKET BOX ASSEMBLY**



**FIGURE 5B:  
MODEL QM-MEH-1-R**



**FIGURE 5C:  
STRAP MOUNTING**



*Ziamatic Corp.*

10 West College Avenue, P.O. Box 337, Yardley, PA 19067-0587 • (215) 493-3618 • FAX: (215) 493-1401

\*ZICO is a registered trademark for fire, safety and marine products made by Ziamatic Corp.

[www.ziamatic.com](http://www.ziamatic.com)

TOLL FREE: 800-711-3473

Copyright Ziamatic Corp. 8-18