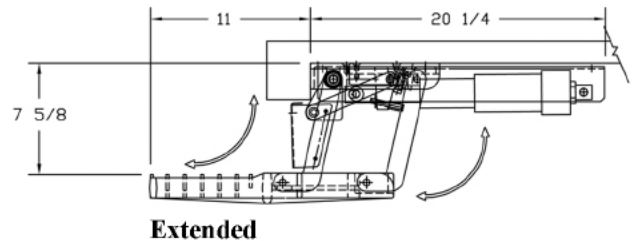
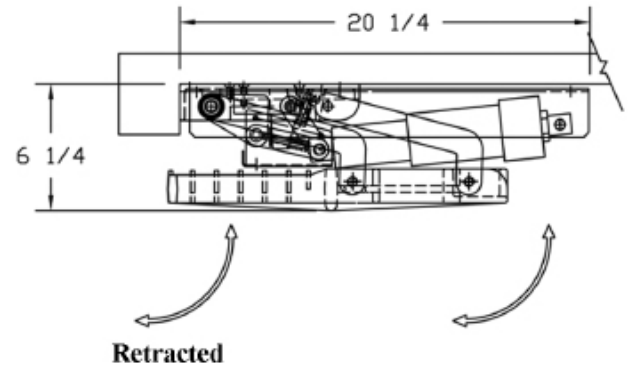
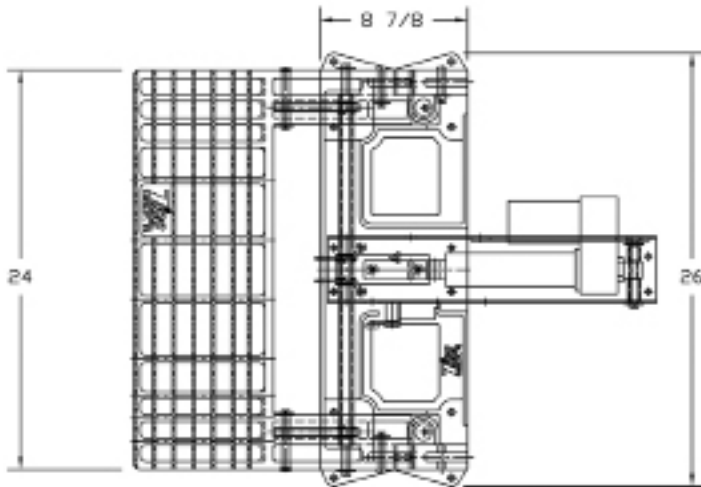


**QUIC-STEP™ RETRACTABLE VEHICLE STEP
MODEL VS-24-9
PARTS AND INSTRUCTION MANUAL**



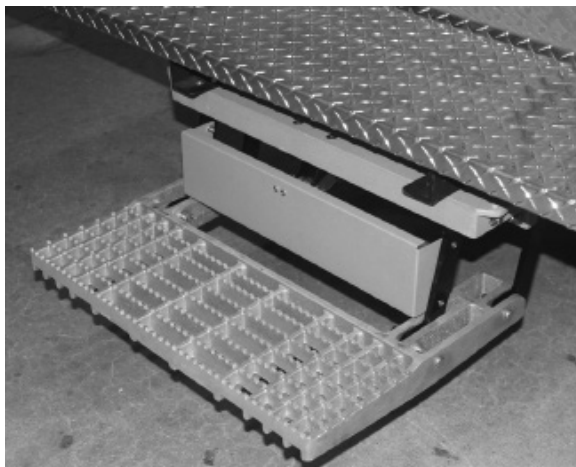
Designed specifically for use on fire and emergency vehicles. May be retrofitted onto existing apparatus.

Cast aluminum step plate 24" wide x 8-3/8" deep with a non-skid surface to provide traction and safety.

Powered by a single 12-volt electric actuator. Includes a patent pending in-line locking mechanism to hold the extended step rigidly in place.

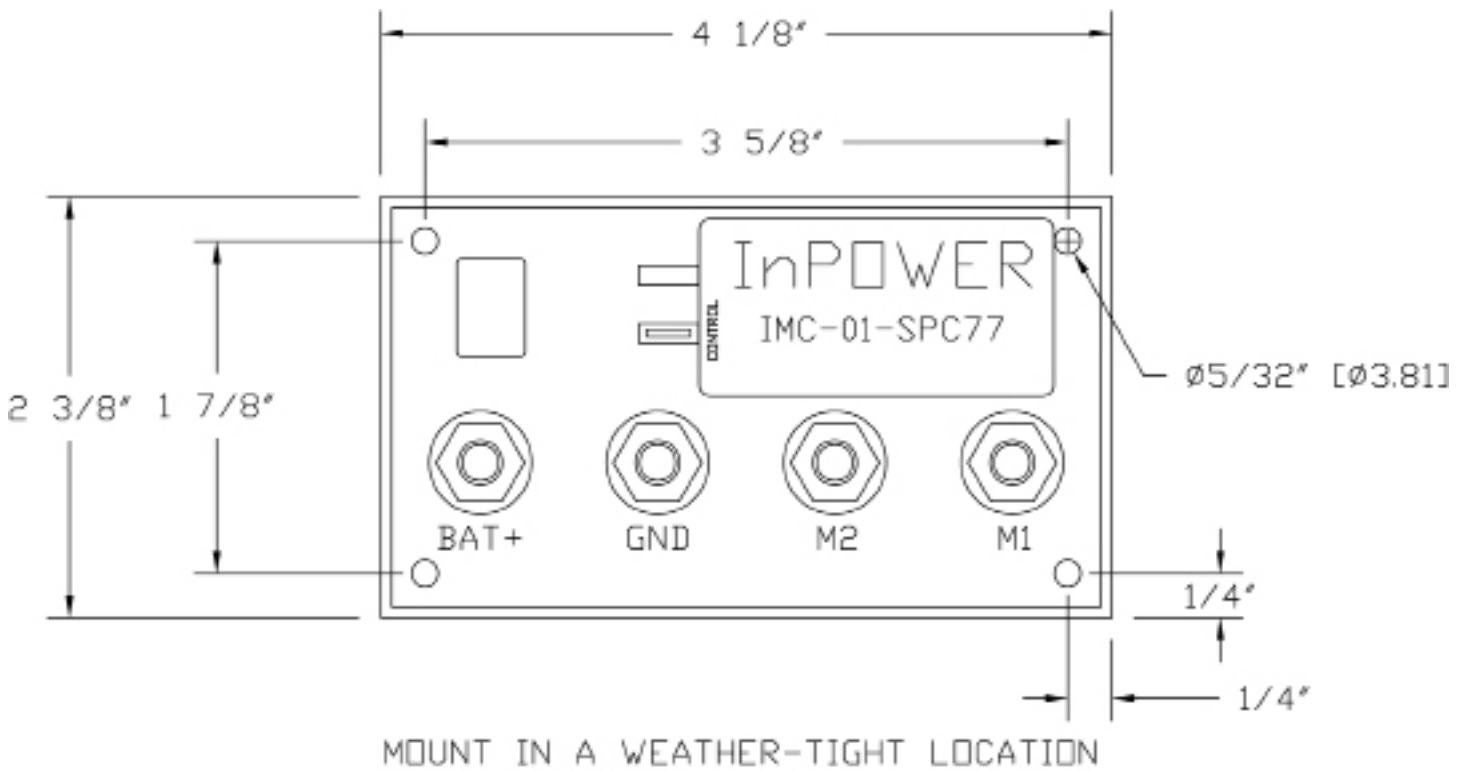
Step may be wired into door interlock system to automatically extend with door opening and retract with door closing.

Meets NFPA 1901-09 requirements for slip resistance and static load.



| MODEL | DESCRIPTION | WT./@ IN LBS. |
|---------|--------------------------|------------------|
| VS-24-9 | Retractable Vehicle Step | 64.0 |

FIGURE 1 - MOTOR CONTROLLER



MOUNTING DETAILS

CHART FOR N.C. SWITCH

| DOOR | SWITCH | ACTUATOR POL | | ACTUATOR | STEP |
|--------|--------|--------------|------|----------|---------|
| OPEN | CLOSED | M1 + | M2 - | EXTEND | GO DOWN |
| CLOSED | OPEN | M1 - | M2 + | RETRACT | GO UP |

NOTE: REVERSE ACTUATOR MOTOR POLARITY ON INPOWER MODULE (M1 & M2) IF DOOR SWITCH IS A N.O. SWITCH

CONTROL LOGIC

OPTION: SWITCH FOR STEP "EXTENDED DOWN"
DASHBOARD STATUS LIGHT

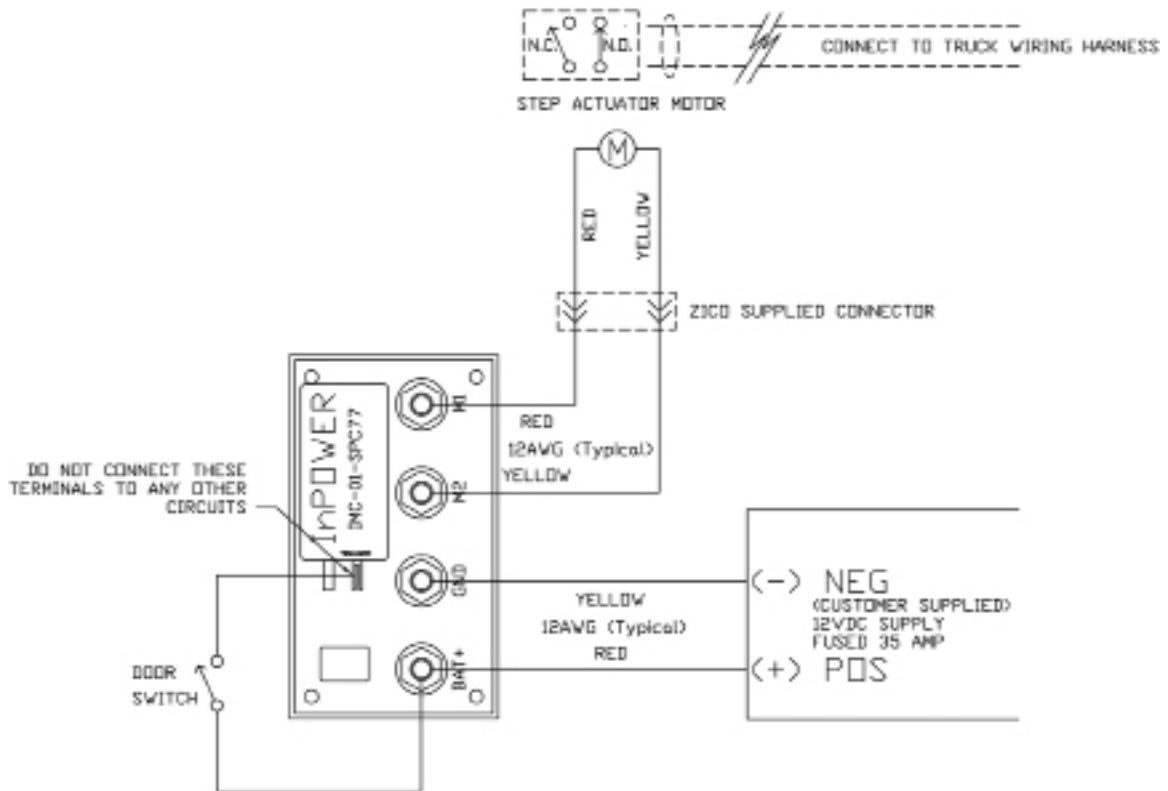


FIGURE 2 - FIELD WIRING DIAGRAM

⚠ WARNING ⚠

ELECTRICAL SHOCK
OR
CRUSHING INJURY

DISCONNECT FROM POWER
BEFORE SERVICING

Failure to do so could result
in serious injury or death

Note: Switch and electrical panel should be mounted in waterproof compartments. Once all electrical connections are complete and system has been tested, protect connections with a weather proofer like liquid tape.

MODE OF OPERATION

- PROVIDE POWER TO AUTOSTEP

EXTEND MODE:

- STEP WILL AUTOMATICALLY EXTEND AS SOON AS THE DOOR IS OPENED.
- STEP WILL REMAIN EXTENDED AS LONG AS DOOR REMAINS OPEN.

RETRACTED MODE:

- STEP WILL AUTOMATICALLY RETRACT AS SOON AS THE DOOR IS CLOSED.
- STEP WILL REMAIN RETRACTED AS LONG AS DOOR REMAINS CLOSED.

CHART 1

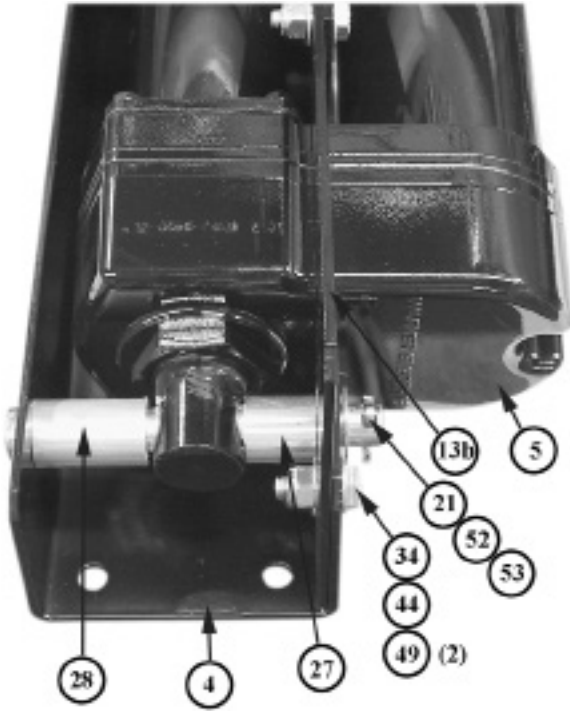


FIGURE 3 - ACTUATOR

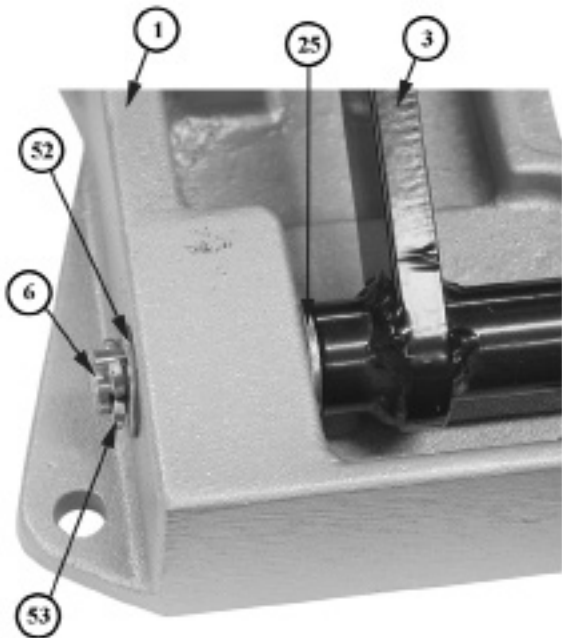
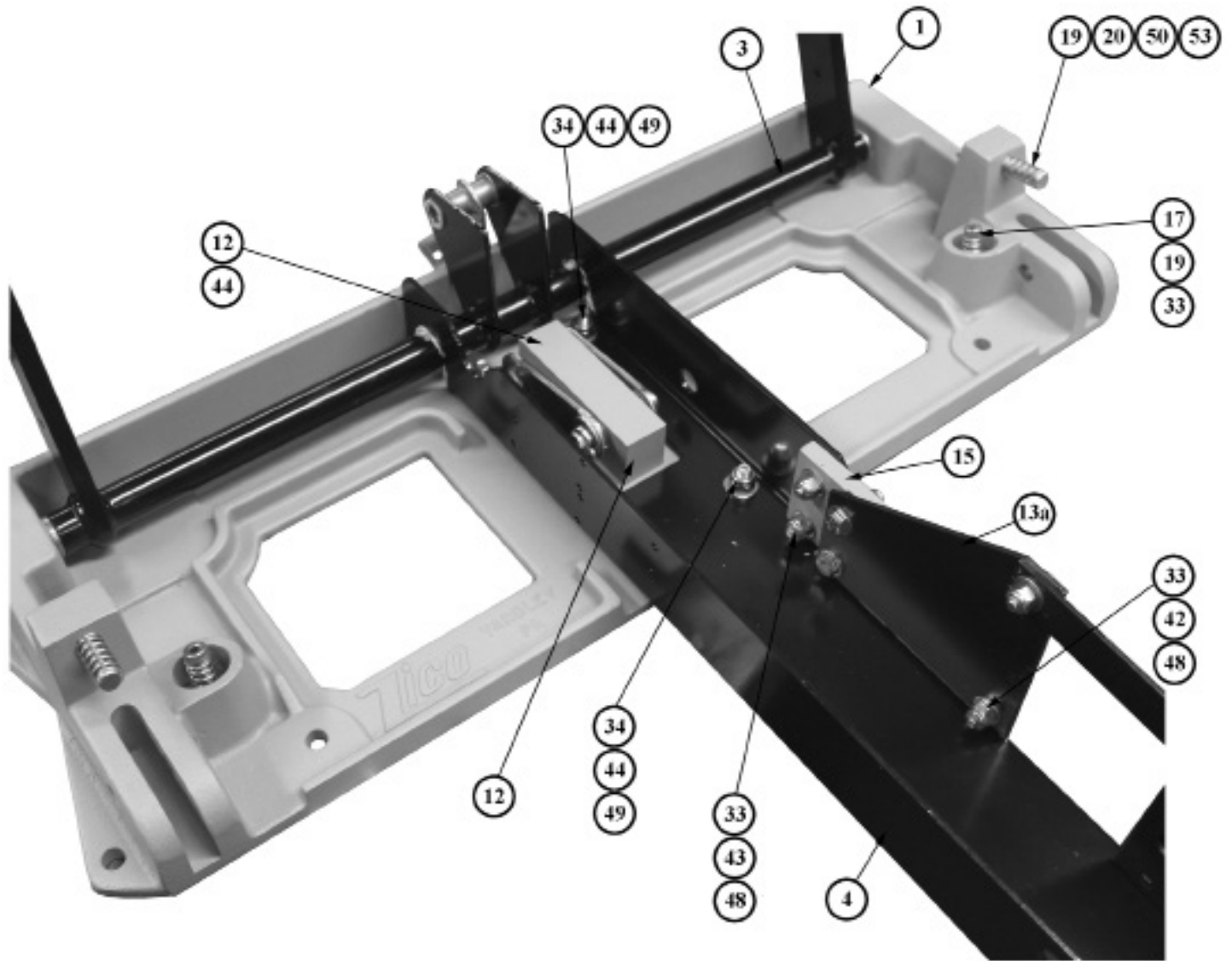
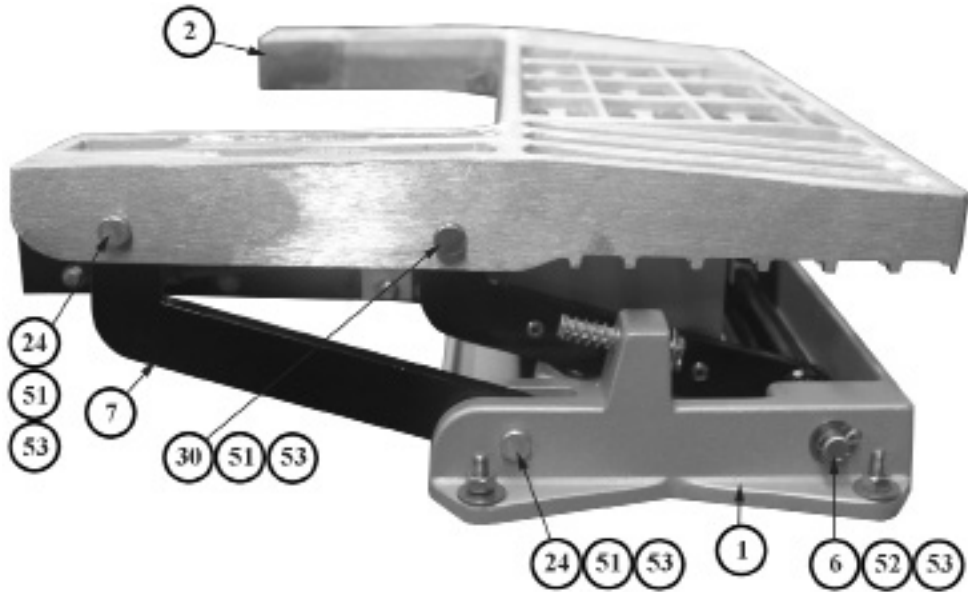


FIGURE 4 - TORQUE TUBE

| ITEM | PART NO. | DESCRIPTION | QTY. |
|------|--------------|---|------|
| 1 | 3094-005-101 | BASE CASTING | 1 |
| 2 | 3094-030-103 | STEP CASTING | 1 |
| 3 | 3094-030-105 | TORQUE TUBE WELDMENT | 1 |
| 4 | 3094-005-133 | ACTUATOR ATTACH. BRACKET | 1 |
| 5 | 3094-005-113 | LINEAR ACTUATOR | 1 |
| 6 | 3094-005-115 | SHAFT, 1/2ø x 24" | 1 |
| 7 | 3094-030-117 | SLAVE ARM | 2 |
| 8 | 3094-005-119 | SHORT LINK | 2 |
| 9 | 3094-005-121 | LONG LINK | 2 |
| 10 | 3094-030-123 | KICK PANEL | 1 |
| 11 | 3094-005-125 | KICK PANEL BRACKET | 1 |
| 12 | 3094-005-135 | MOUNTING BLOCK, LINKAGE | 1 |
| 13a | 3094-005-137 | STIFFENING PLATE A | 1 |
| 13b | 3094-005-138 | STIFFENING PLATE B | 1 |
| 15 | 3094-005-143 | SPACER PLATE | 1 |
| 17 | 9110-313116 | SHOULDER SCREW, 5/16-18 x 1 S/S | 2 |
| 18 | 9010-315032 | SHOULDER SCREW, 1/2 - 13 x 2/3/8-16TH. | 1 |
| 19 | 3094-005-180 | SPRING BUMPER | 4 |
| 20 | 9080-003136 | CLEVIS PIN, 5/16 x 2-1/4 | 2 |
| 21 | 9080-005064 | CLEVIS PIN, 1/2ø x 4 | 1 |
| 22 | 9080-003730 | CLEVIS PIN, 3/8 x 1-7/8 | 1 |
| 23 | 0000-061-020 | 22-20 GA. CAVITY SEAL, PURPLE | 2 |
| 24 | 9080-004332 | CLEVIS PIN, 7/16 x 2 | 4 |
| 25 | 3094-005-182 | BUSHING SHAFT, .500 ID x 5/8 OD, .1 FL, BRONZE | 2 |
| 26 | 3094-005-184 | SLEEVE, 3/8 ID x 5/8 OD x 1.625 LG., SS | 1 |
| 27 | 3094-005-186 | SPACER, .75 OD, .781 LG. x .083 WALL, ALUM. TBG. | 1 |
| 28 | 3094-005-188 | SPACER, .75 OD x 1.25 LG. x .083 WALL, ALUM. TBG. | 1 |
| 29 | 0000-061-018 | 20-18 GA. CAVITY SEAL, GREEN | 2 |
| 30 | 9080-004356 | CLEVIS PIN, 7/16 x 3-1/2 | 2 |
| 32 | 9113-171900 | HEX NUT, 10-24, ESNA LOCKNUT S/S | 6 |
| 33 | 9113-172500 | HEX NUT, 1/4-20, ESNA LOCKNUT S/S | 10 |
| 34 | 9018-173100 | HEX NUT, 5/16-18, ESNA LOCKNUT GR. 8 | 6 |
| 35 | 9018-173700 | HEX NUT, 3/8-16, ESNA LOCKNUT GRD. 8 | 2 |
| 37 | 0000-060-002 | WEATHER PACK HOUSING, FEMALE | 2 |
| 40 | 0000-060-001 | WEATHER PACK HOUSING, MALE | 2 |
| 41 | 9110-221912 | SCREW, #10-24 x 3/4, PHIL. PAN HD. S/S | 6 |
| 42 | 9110-102512 | SCREW, 1/4-20 x 3/4, HEX HD. S/S | 4 |
| 43 | 9110-102516 | SCREW, 1/4-20 x 1, HEX HD. S/S | 4 |
| 44 | 9018-363116 | SCREW, 5/16-18 x 1, FLAT HD. SOCKET GR. 8 | 6 |
| 45 | 9018-103740 | SCREW, 3/8-16 x 2-1/2, HEX HD. GR. 8 | 1 |
| 46 | 0000-062-180 | 20-18 GA. WEATHER PACK TERMINAL, MALE | 2 |
| 47 | 9114-101900 | WASHER #10 NOM S/S | 6 |
| 48 | 9114-112500 | WASHER, 1/4ø NOM. S/S | 14 |
| 49 | 9114-113100 | WASHER, 5/16ø NOM. S/S | 6 |
| 50 | 9114-113700 | WASHER, 3/8ø NOM. S/S | 4 |
| 51 | 9014-114300 | WASHER, 7/16ø NOM | 6 |
| 52 | 9114-105000 | WASHER, 1/2ø NOM. S/S | 4 |
| 53 | 9170-001212 | COTTER PIN, 1/8 x 3/4 S/S | 11 |
| 54 | 9110-363112 | SCREW, 5/16-18 x 3/4, FLAT HD. SOCKET S/S | 2 |
| 55 | 9014-133700 | WASHER, 3/8ø NOM. GR.8 | 2 |
| 56 | 0000-062-181 | 20-18 GA. WEATHER PACK TERMINAL, FEMALE | 2 |
| 58 | 3094-005-195 | INPOWER MODULE | 1 |
| 60 | 0000-000-112 | SERIAL NUMBER LABEL | 1 |
| 61 | 9120-101103 | DRIVE SCREW #4 x 3/16 TYPE U | 2 |
| 62 | 3094-005-190 | WARNING LABEL, ELECTRICAL SHOCK | 1 |

**FIGURE 5 -
ACTUATOR RETAINER BRACKET**





**FIGURE 8 -
SIDE VIEW
(upside down)**

FIGURE 9 - STEP

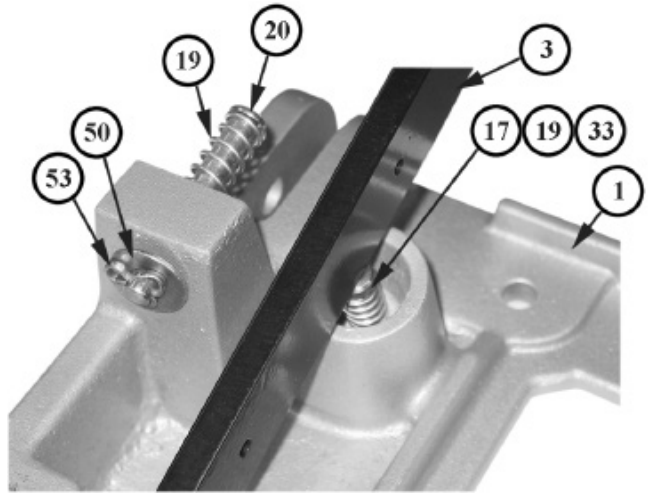
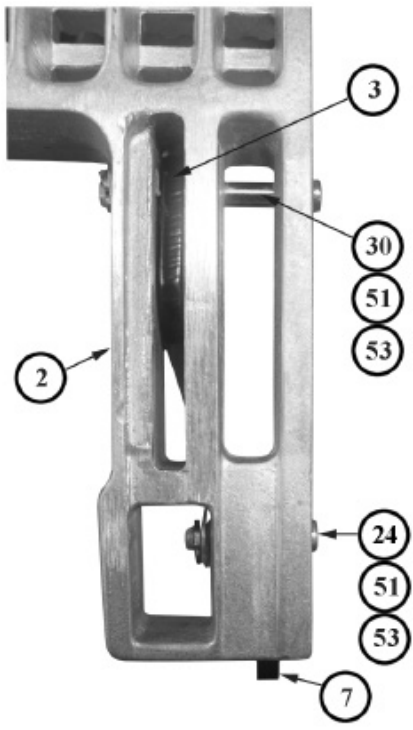
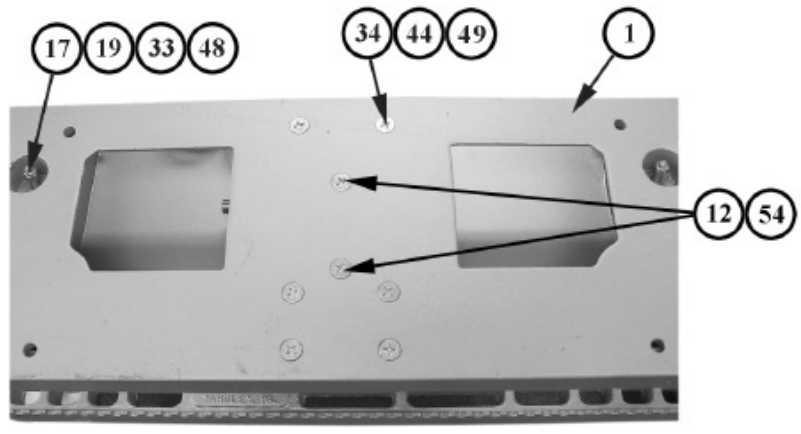


FIGURE 10 - SPRINGS

FIGURE 11 - TOPSIDE OF BASE



SERIAL NUMBER

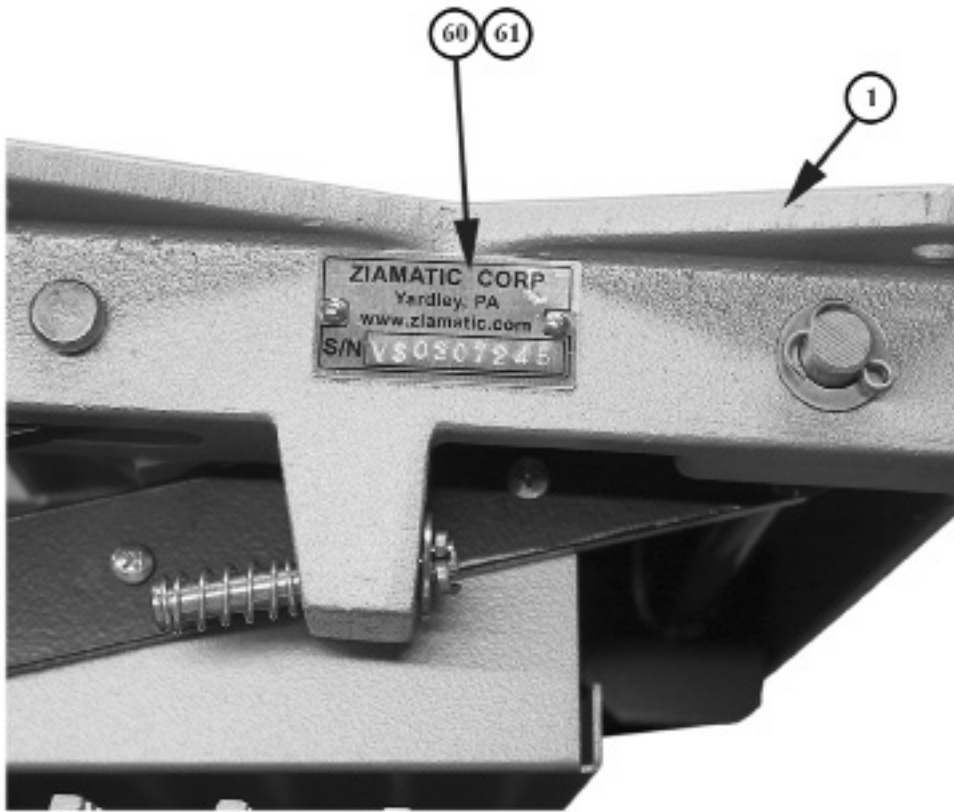


FIGURE 12 - SERIAL NUMBER LABEL

Mounting to Apparatus

- A. An 7-1/16" center to center hole pattern is provided in the side flanges of the base casting. Additional holes may be added as needed.
- B. 3/8" diameter mounting hardware, a minimum of four, is required.
- C. The apparatus structure that the step is mounted to must be strong enough to support 500 lbs. on the extended step.

Maintenance

- A. Semi-Annually or at Scheduled Apparatus Lube Service
 - 1. Visually inspect step for excess dirt build-up and debris.
 - 2. Lubricate all joints and pivots with CRC Stor & Lube long-term lubricant and rust preventative #03032. Excess lubrication should be wiped off.
 - 3. Electric Actuator - We suggest the exposed shaft be cleaned and sprayed with WD40 or a similar light, moisture-repelling silicon type lubricant.
- B. Pressure Washing

Do not operate pressure washer around or near electric actuators. Excessive pressure may allow soap and water to blow past the seal, damaging the actuator.



Ziamatic Corp.

10 West College Avenue, P.O. Box 337, Yardley, PA 19067-0587 • (215) 493-3618 • FAX: (215) 493-1401

*ZICO is a registered trademark for fire, safety and marine products made by Ziamatic Corp.

www.ziamatic.com
TOLL FREE: 800-711-3473

Copyright Ziamatic Corp. 10-20

WARRANTY REGISTRATION

PLEASE MAIL OR FAX A COPY TO ZICO TO REGISTER YOUR UNIT

FIRE DEPARTMENT NAME: _____ CONTACT PERSON: _____

PHONE NO. _____ FAX NO. _____

STREET ADDRESS: _____ P.O. BOX: _____

CITY: _____ STATE: _____ ZIP: _____

UNIT MODEL NO.: _____

SERIAL NO. ON UNIT: (SEE PAGE 8 FOR LOCATION) _____

INSTALLED ON: (VEHICLE MFG.) _____ DELIVERED: (DATE) _____

WAS UNIT INSTALLED ON: _____ NEW VEHICLE
_____ RETROFITTED ONTO EXISTING VEHICLE

WHERE DID YOU HEAR ABOUT OUR PRODUCT?

_____ MAGAZINE AD (SPECIFY) _____

_____ DEALER (SPECIFY) _____

_____ VEHICLE MFG. (SPECIFY) _____

_____ ANOTHER DEPARTMENT (SPECIFY) _____

_____ OTHER (SPECIFY) _____