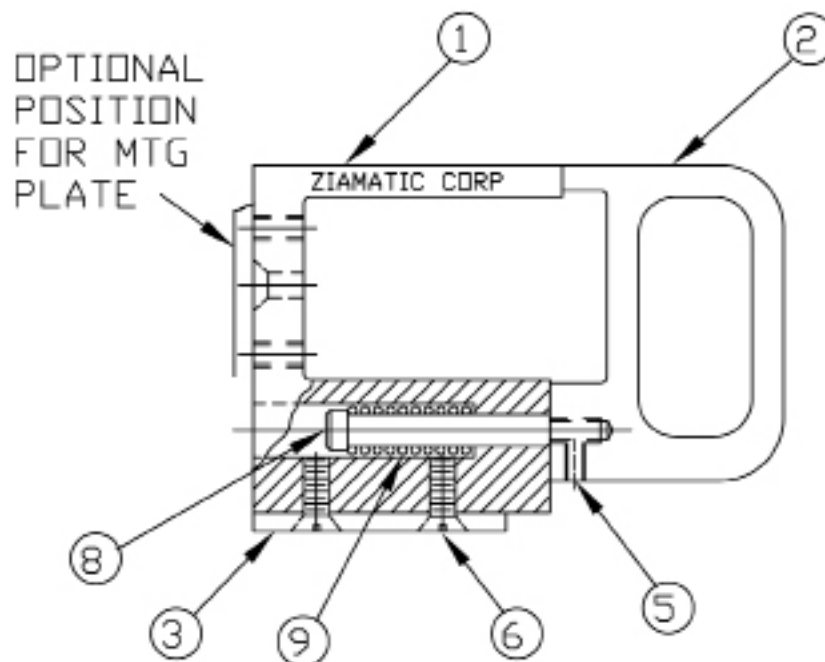


QUIC-MOUNT® FOLDING LADDER BRACKET SET
MODELS FLB- & FLBA-
PARTS MANUAL

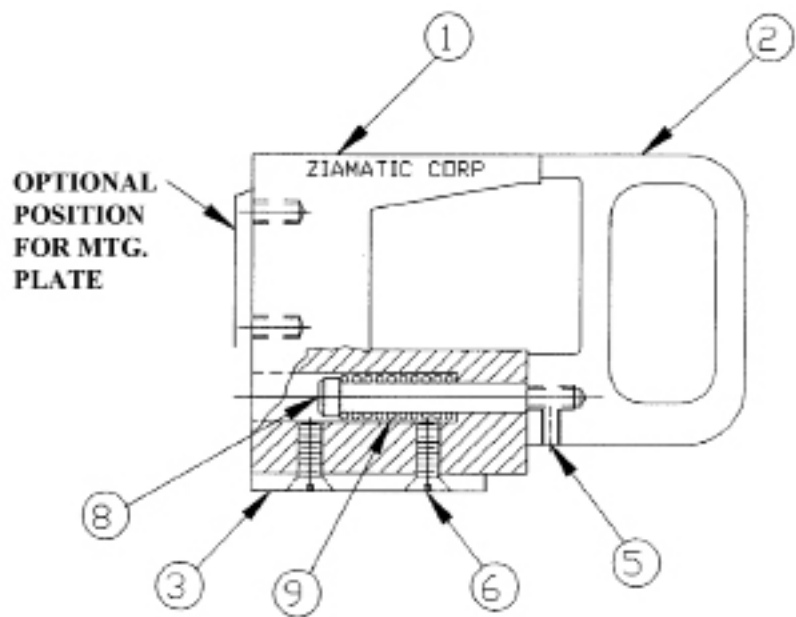
Model FLB - For Use with Duo-Safety Series 585-A:



| MODEL | DESCRIPTION | WT./SET IN LBS. |
|-------|---------------------------|--------------------|
| FLB | Bracket - 3" D x 1-15/16" | 2.0 |

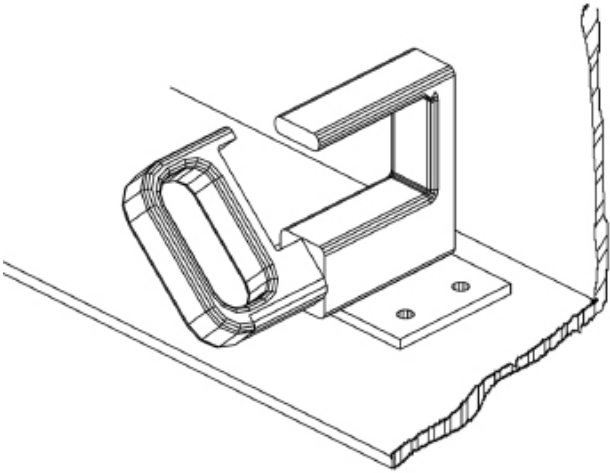
| ITEM NO. | PART NO. | DESCRIPTION | PCS. REQ. |
|-------------|--------------|---|--------------|
| 1 | 3090-000-105 | Body Casting - Painted | 2 |
| 2 | 3090-000-110 | Handle Casting - Painted | 2 |
| 3 | 3090-000-115 | Mounting Plate - Painted | 2 |
| 5 | 9110-381606 | 8-32 x 3/8 Set Screw | 2 |
| 6 | 9010-152510 | 1/4-20 x 5/8 Flat Head Screw | 4 |
| 8 | 9010-313139 | 5/16 x 2" Socket Shldr Bolt 1/4-20 Thrd | 2 |
| 9 | 3090-000-120 | Compression Spring | 2 |

Model FLBA - For Use with Alco-Lite Model ALP-080:




| MODEL | DESCRIPTION | WT./SET IN LBS. |
|-------|------------------------------|--------------------|
| FLBA | Bracket - 2-3/16" D x 1-1/2" | 2.3 |

| ITEM NO. | PART NO. | DESCRIPTION | PCS REQ. |
|----------|--------------|--|----------|
| 1 | 3090-155-105 | Body Casting - Painted | 2 |
| 2 | 3090-000-110 | Handle Casting - Painted | 2 |
| 3 | 3090-000-115 | Mounting Plate - Painted | 2 |
| 5 | 9110-381606 | 8-32 x 3/8 Set Screw | 2 |
| 6 | 9010-152510 | 1/4-20 x 5/8 Flat Head Screw | 4 |
| 8 | 9010-313139 | 5/16 x 2" Socket Shldr Bolt 1/4-20 Thrd | 2 |
| 9 | 3090-000-120 | Compression Spring | 2 |



Mounting:

Ladder brackets may be mounted vertically or horizontally to suit your requirements. The mounting plate may be placed underside (as shown) or at end.



Ziamatic Corp.

10 West College Avenue, P.O. Box 337, Yardley, PA 19067-0587 • (215) 493-3618 • FAX: (215) 493-1401

www.ziamatic.com

TOLL FREE: 800-711-3473

(215) 493-3618 • FAX: (215) 493-1401

*ZICO is a registered trademark for fire, safety and marine products made by Ziamatic Corp.

Copyright Ziamatic Corp. 12-12

Page 2