

**QUIC-RELEASE® SLIDE-OUT & FLIP-DOWN SLIDE ASSEMBLY
w/ FRONT LOCKING MECHANISM**

MODEL QR-SOFD-2

PARTS AND INFORMATION MANUAL

**NOTE: This mounting device has been designed for use with Ziamatic
QUIC-RELEASE gas cylinder bracket. (sold seperately)
Model: QR-MV(manual 3030PM1)**

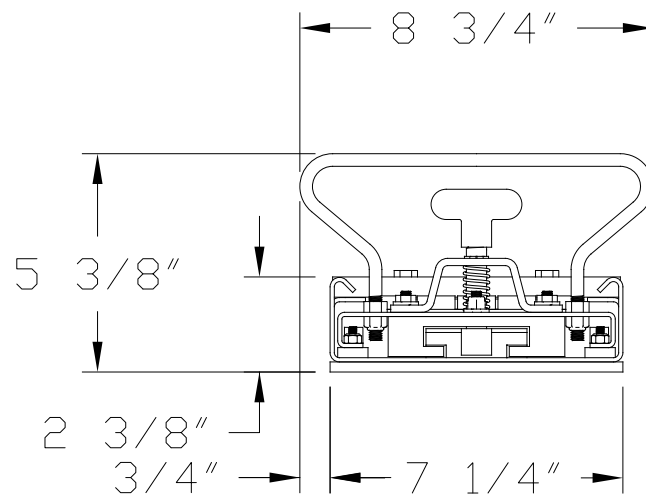
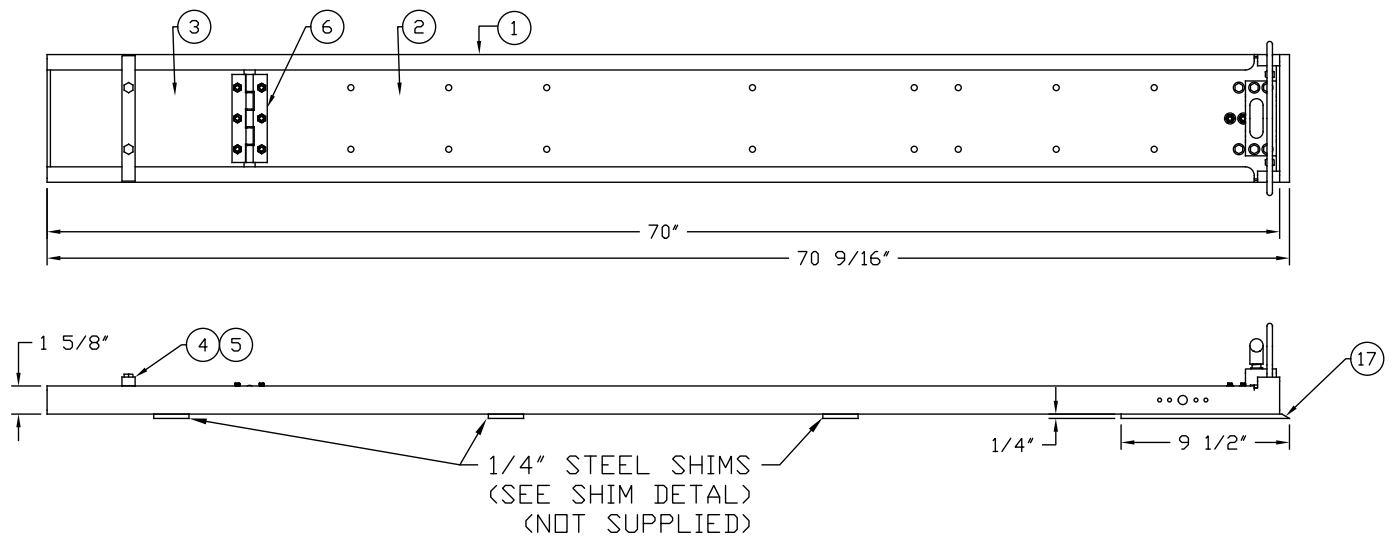


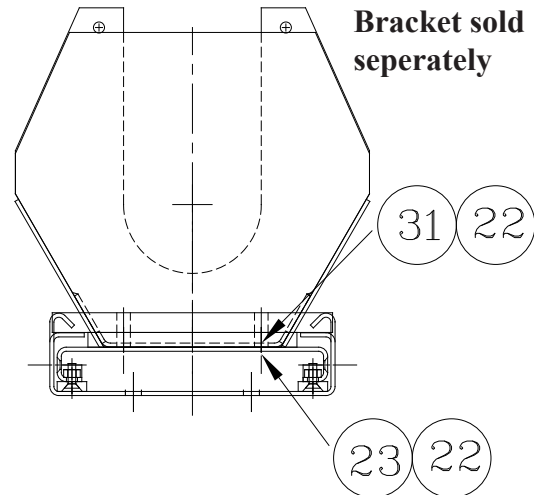
Figure 1A

ITEM NO.	PART NO.	DESCRIPTION	QTY.
1	3030-160-103	Main Housing	1
2	3030-163-105	Slider, Main	1
3	3030-160-105	Slider, Extension	1
4	3030-160-107	Stop Bar	1
5	3030-160-109	Spacer Block	1
6	3030-160-117	Hinge, Assembly	1
7	3030-160-125	Wear Strip, Main	2
8	3030-160-127	Wear Strip, Short	2
9	3030-163-107	Handle, SS	1
10	3095-260-119	T Handle	1
11	3030-163-109	Bearing Pin	1
12	3030-163-111	Bracket - Bearing Pin	1
13	3030-163-113	Spring, Lock Pin	1
14	9040-111212	Spring Pin, $\phi 1/8 \times 3/4$	1
15	3030-163-115	Bearing Block Receiver	1
16	3030-163-117	Bearing Block	1
17	3030-163-119	Stiffening Plate	1
18	9018-362514	Screw 1/4-20 x 7/8 FH Hex 82°, GR8	9
19	9010-162010	Screw, 10-32 CSK x 5/8" x 82°, PH ZPs	24
20	9013-172000	Nut, 10-32 Nylon Lock	24
21	9010-103124	Screw, Hex5/16-18 x 1 1/2 GR8	2
22*	9014-183-100	Washer, 5/16 Flat GR8	34
23*	9015-173-100	Nut, 5/16-18, Nylon Lock GR5	20
24	9010-102508	Screw, 1/4-20 x 5/8 Hex Head ZPS	6
25	9013-172501	Nut, 1/4-20 Nylon Lock, Low-Pro, ZPS	6
26	9012-183100	Nut, 5/16-18, Hex HD ZPS	2
27	9018-102516	Screw, 1/4-20 x 3/4" Hex Head GR8, ZPS	6
28	9014-182500	Washer, 1/4 Flat GR8, ZPS	9
30	9018-172500	Nut, 1/4-20 Nylon Lock GR5, ZPS	3
31*	9015-103116	Screw, 5/16-18 x 1" Hex HD, GR5, ZPS	16
32	0000-000-122	Red Thread Lock	
33	3030-163-125	Retaining Ring	1

Unit Weight: 55 lbs

ITEMS PACKED SEPARATELY			
ITEM NO.	PART NO.	DESCRIPTION	QTY.
22	9014-183100	5/16 FLATWASHER, GR8	32
23	9015-173100	HEX NUT, 5/16-18 SELF LOCK-GR5	16
31	9015-103116	SCREW, 5/16-18 x 1" HEX.-GR5	16

NOTE: ALL "PACKED SEPARATELY" ITEMS SHOWN ABOVE HAVE BEEN ACCOUNTED FOR IN THE MAIN BILL OF MATERIALS.



See page 4 for additional information.

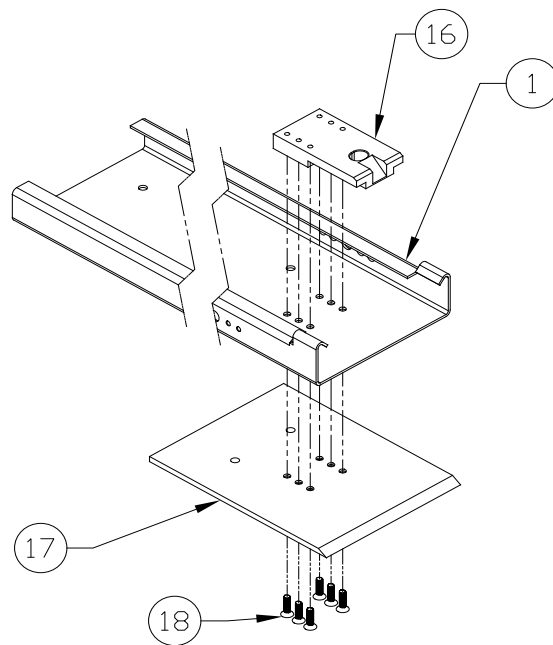
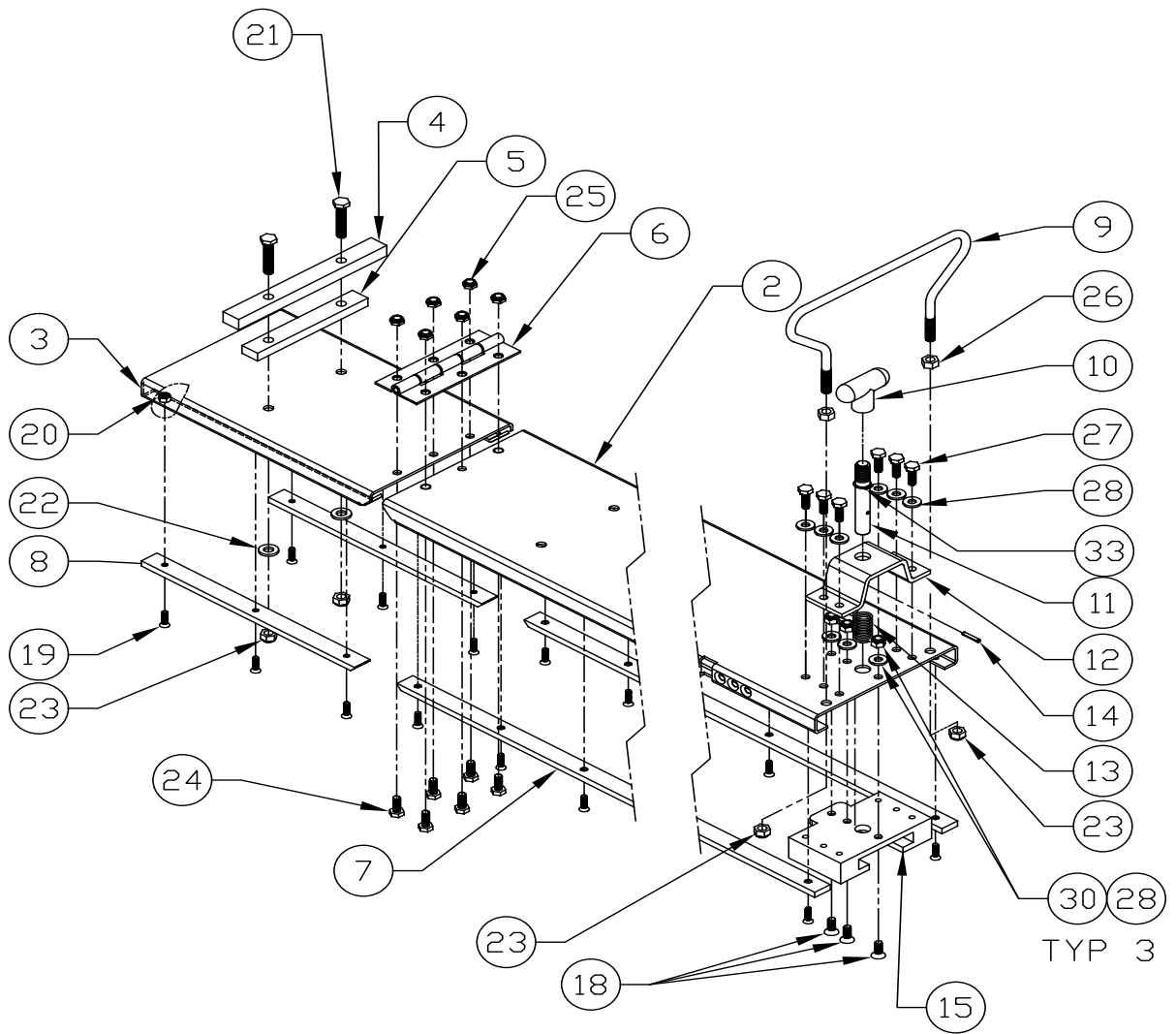


Figure 1B

Mounting dimensions

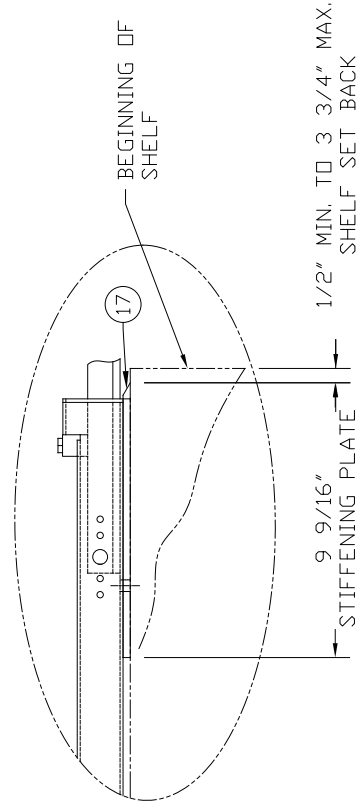
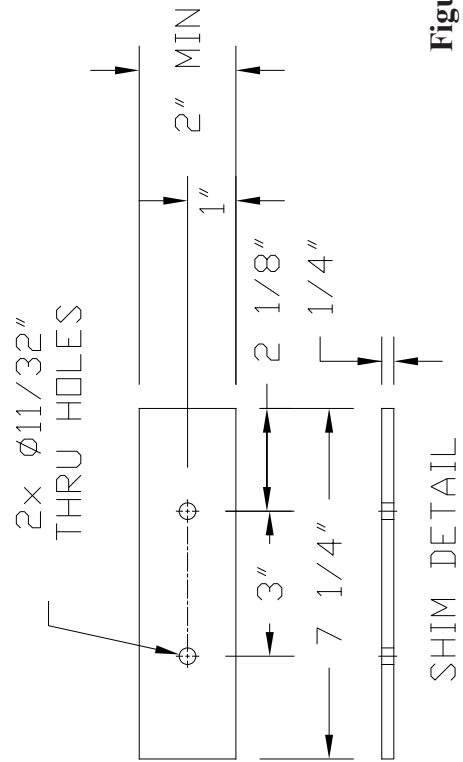
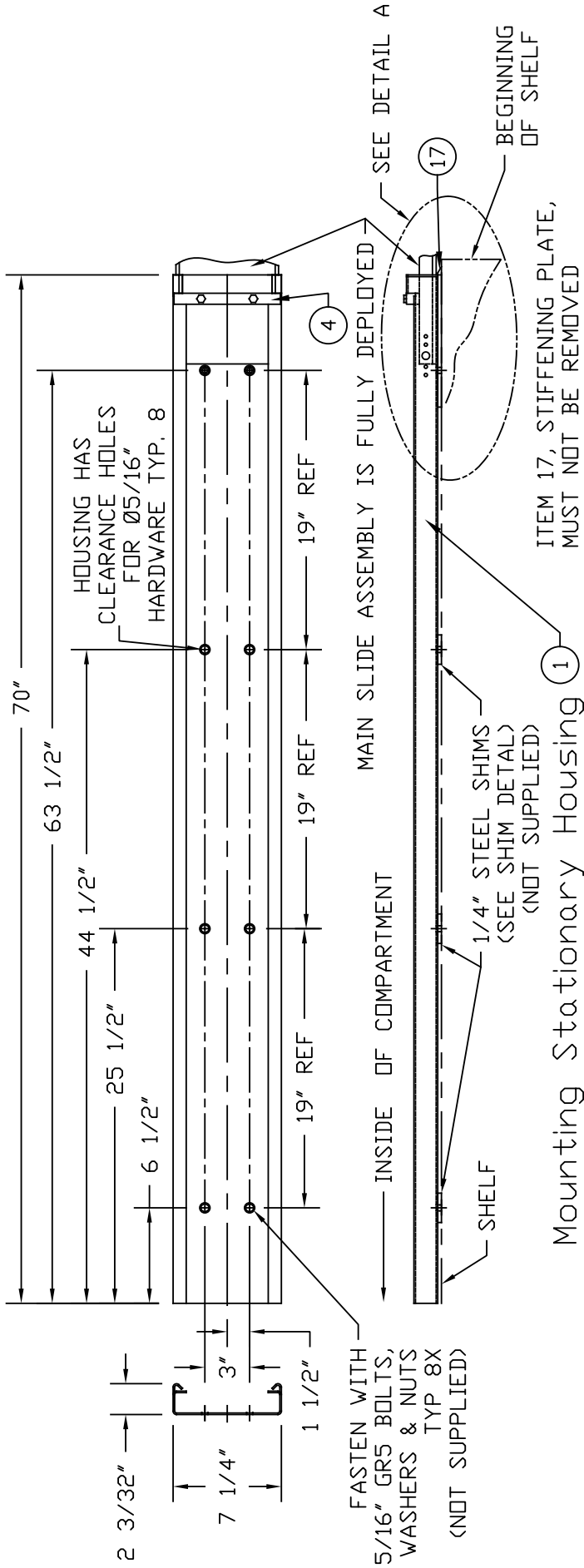


Figure 2A

Mounting dimensions when sytem deployed

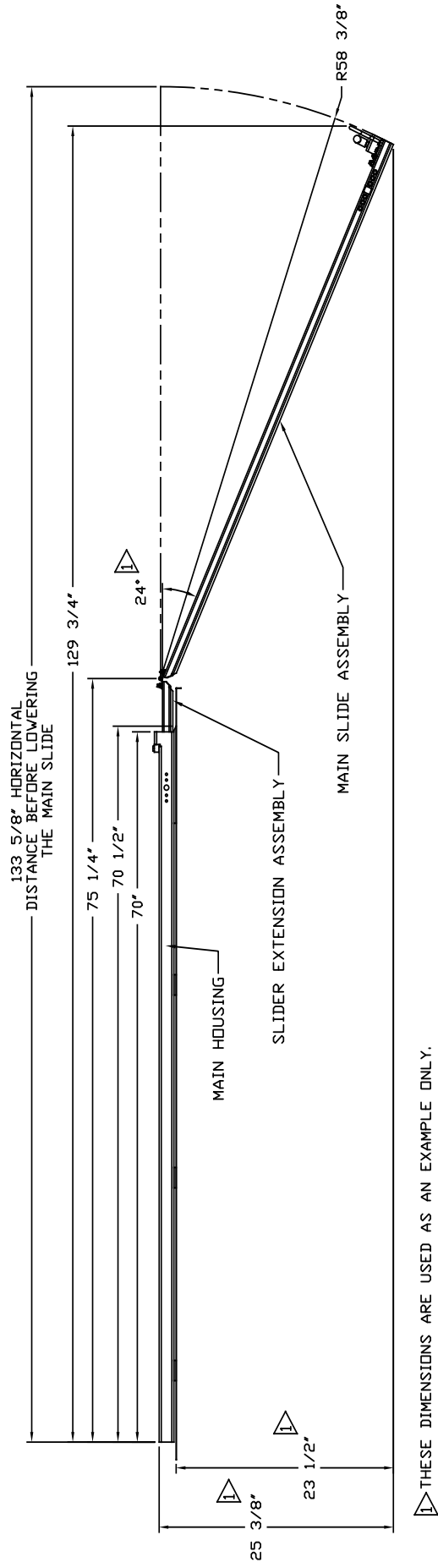


Figure 2B

Typical mounting with QR-MV

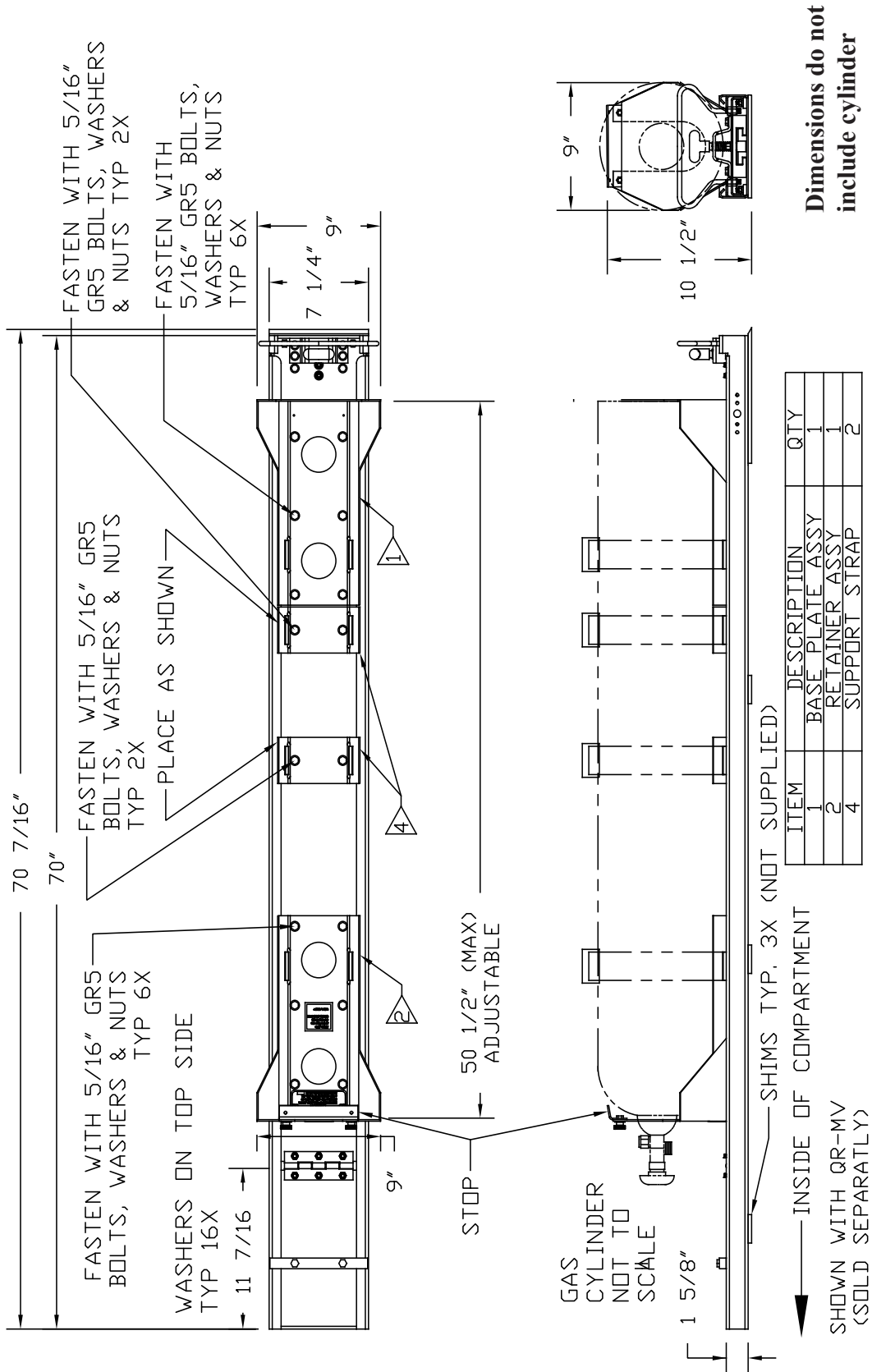
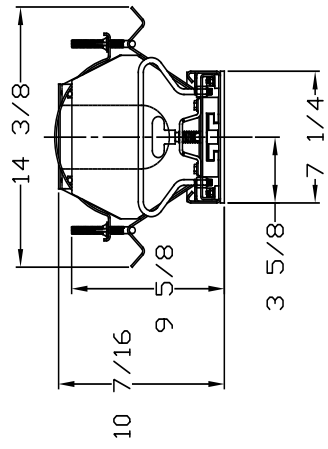
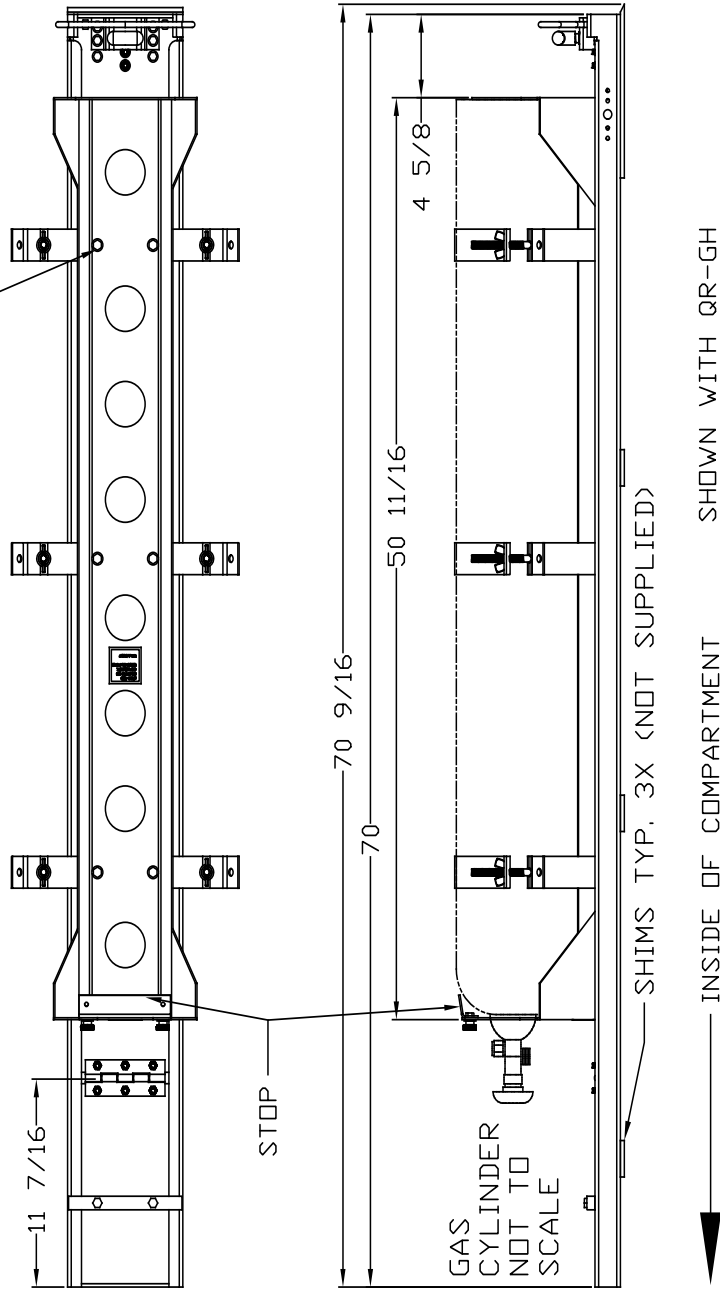


Figure 3

Typical mounting with QR-GH

FASTEN WITH GR5 Ø5/16 BOLTS, WASHERS AND NUTS
6 PLACES
WASHERS ON TOP SIDE
NOTE: STRAPS HAVE BEEN REMOVED TO
SHOW THE 6 FASTENER LOCATIONS



Dimensions do not include cylinder

Figure 4

Note: Numbers in parentheses correspond to numbers in Parts List for ease of assembly.

I. Parts identification. See Figures 1A and 1B.

II. Preparing the QR-SOFD-2

1. Roughly position the QR-SOFD-2 in the apparatus. See Figure 2A and 2B for mounting dimensions. See Figure 3 (with QR-MV) or Figure 4 (with QR-GH) for overall height dimensions. Note that these dimensions do not include the Gas Cylinder.

III. Mounting the QR-SOFD-2 to the Apparatus

1. Position the QR-SOFD-2 in the apparatus. Check for fit and function by using the Handle (9) to pull the Main Slider (2) out. Allow for the Slider to fold down. Check for any interference with the apparatus. See Figures 2A and 2B.
2. Use 1/4" thick metal (not supplied) to make 3 shims to be placed under the QR-SOFD-2 mounting locations to keep the unit level. See Figure 3 or 4
3. Keeping the unit in the extended and folded down position, mark and drill the hole mounting locations shown in Figure 2A & 2B.
4. Mount the Stationary Housing (1) to the Apparatus using 8 sets of GR5 5/16 bolts, washers and nuts (not supplied). See Figure 2A.

IV. Mounting the QR-MV model to the QR-SOFD-2 for a G or H Gas Cylinder

Note: See Figure 3 for the following steps and refer to the QR-MV manual (3030PM1).

1. The positions of the brackets in Figure 3 are spaced for G and H Gas Cylinders.
2. Mount the four brackets as shown using 16x GR5 5/16-18 Hex Head Screws (31), washers (22) and nuts (23).
3. Attach the four Strap and Buckle Assemblies. Refer to the manual that is supplied with the bracket.

V. Mounting the QR-MV model to the QR-SOFD-2 for a typical M Gas Cylinder

Note: See Figure 3 for the following steps and refer to the QR-MV manual (3030PM1).

1. Position and fasten the QR-MV's Base Plate Assembly to the QR-SOFD-2 Main Slider (2) using 6x GR5 5/16-18 Hex Head Screws (31), washers (22) and Nuts (23).
2. Position QR-MV's Retainer Assembly to the approximate height of the Gas Cylinder on the QR-SOFD.
3. Place an empty gas cylinder into the bracket.
4. Locate the Retainer Assembly so that the Stop is at the neck of Gas Cylinder. Check for fit and function of the Gas Cylinder in the bracket.
5. Fasten the Retainer Assembly using 6x GR5 5/16-18 Hex Head Screws (31), washers (22) and nuts (23). Drill Ø11/32 holes if necessary to make sure that the Retainer Assembly has 6 fasteners securing it to the Main Slider (2).
6. See Figure 3 for the locations of the two Support Straps.
7. Fasten a Support Strap using 2x GR5 5/16-18 Hex Head Screws (31), washers (22) and nuts (23). Repeat for the other Support Strap.
8. Attach the four Strap and Buckle Assemblies. Refer to the manual that is supplied with you bracket.

VI. Mounting Model QR-GH models to the QR-SOFD-2

Note: See Figure 4 for the following steps and refer to the QR-GH manual (3030PM2).

1. Position the bracket as shown.
2. Mount the bracket using 6x GR5 5/16-18 Hex Head Screws (31), washers (22) and nuts (23).
3. Attach the 3 Straps. Refer to the manual that is supplied with the bracket.

WARNING: Gas Cylinders are heavy and bulky. Personal injury can occur during Gas Cylinder change over. Use caution during the changeover and when lowering the Main Slider (2) to the ground.

VII. Adding a Gas Cylinder to the bracket.

1. Pull up the "T" Handle (10) to unlock the lock pin (11). Use the Handle (9) to pull out the Main Slider (2) and allow for the Slider to fold down and rest on the ground. See Figure 5
2. Place the Gas Cylinder into the bracket.
3. Secure the straps around the Gas Cylinder.

Important: If the Strap and Buckle Assembly is made of fabric, see Figure 6 for proper threading to secure the gas cylinder.

4. Connect the supply line to the Gas Cylinder valve.
5. Turn the supply line valve on.
6. Turn the Gas Cylinder valve on.

Important: Listen for any gas leaks. Shut off the gas valve immediately. Fix / tighten any faulty connections.

7. Use the Handle (9) to lift up the Main Slider (2) into a horizontal position. Push the Main Slider into the stowed position of the apparatus.

Important: Make sure that the Bearing Pin (11) of the Lock Assembly is engaged into the hole of the Bearing Block Receiver (15). Test the engagement by pulling on the Handle (9) and making sure that the Main Slider does not pull out.

VIII. Removing the Gas Cylinder from the bracket.

1. Pull up the "T" handle(10) to unlock the lock pin(11). Use the Handle (9) to pull out the Main Slider (2) and allow for the Main Slider to fold down and rest on the ground. See Figure 5
2. Shut the Gas Cylinder valve off.
3. Shut the supply line valve off.
4. Disconnect the supply line at the top of the Gas Cylinder.
5. Remove Stop at the neck of the Gas Cylinder.
6. Undo the straps.
7. Remove the Gas Cylinder from the bracket.

Important: Before replacing the Gas Cylinder, inspect the straps and the bracket components for any damage. Replace parts if needed.

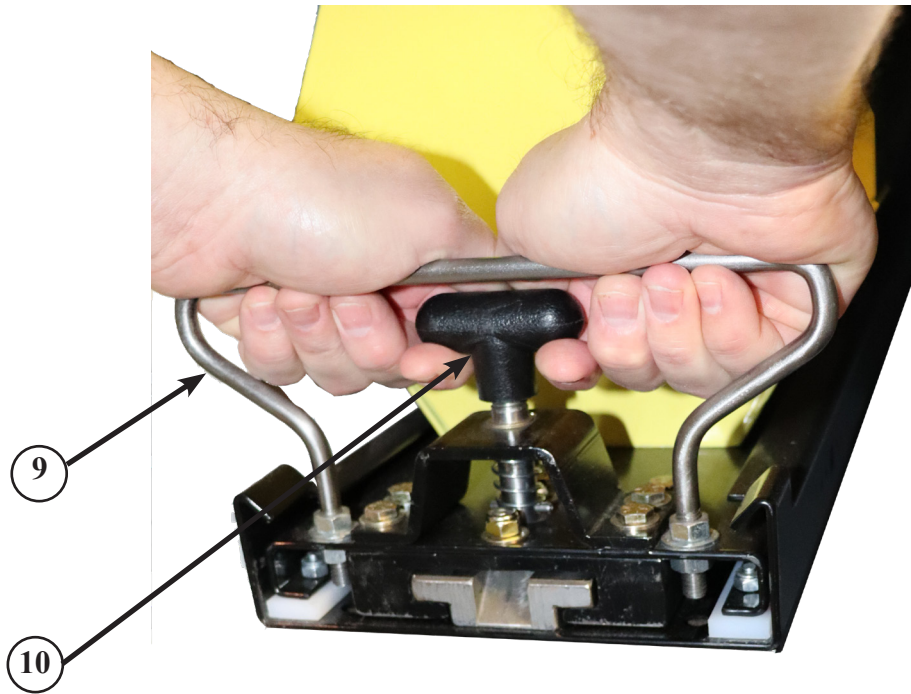


Figure 5

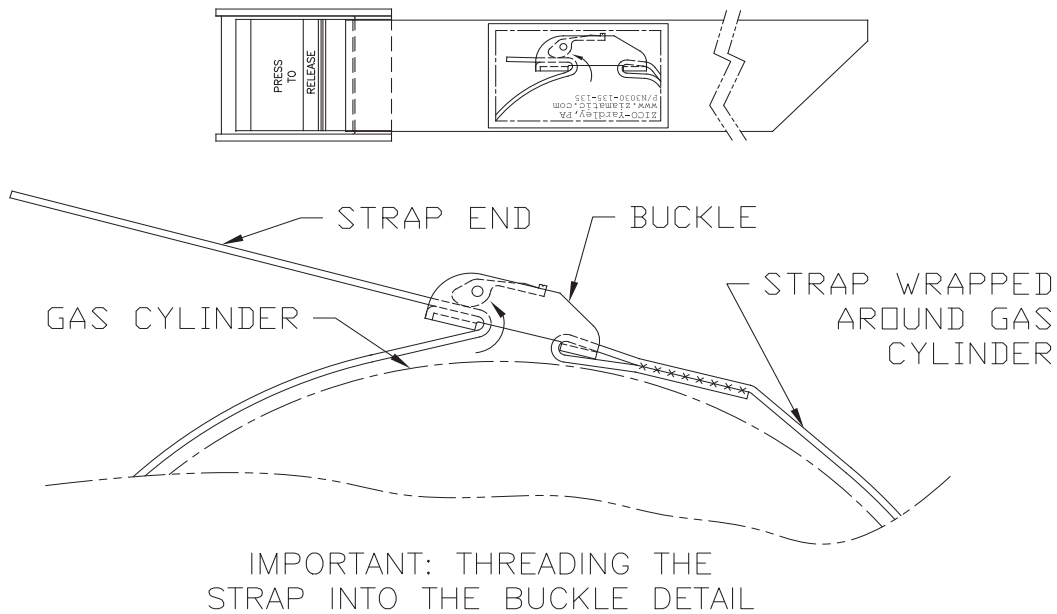


Figure 6



Ziamatic Corp.

10 West College Avenue, P.O. Box 337, Yardley, PA 19067-0587 • (215) 493-3618 • FAX: (215) 493-1401

www.ziamatic.com

TOLL FREE: 800-711-3473

*ZICO is a registered trademark for fire, safety and marine products made by Ziamatic Corp.

Copyright Ziamatic Corp. 1-23