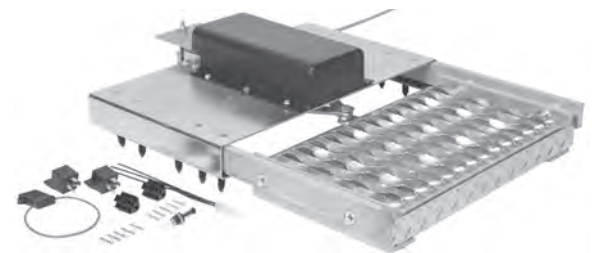


**QUIC-STEP® HORIZONTAL VEHICLE STEP
MODEL HVS-1
PARTS AND INSTRUCTION MANUAL**



Step-Out with Confidence

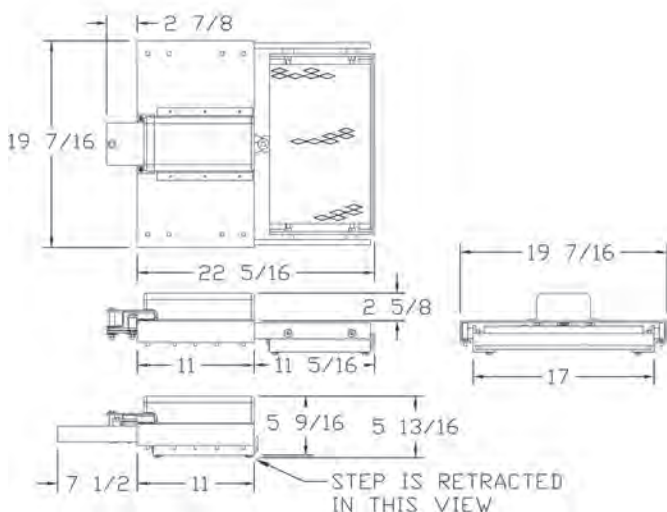
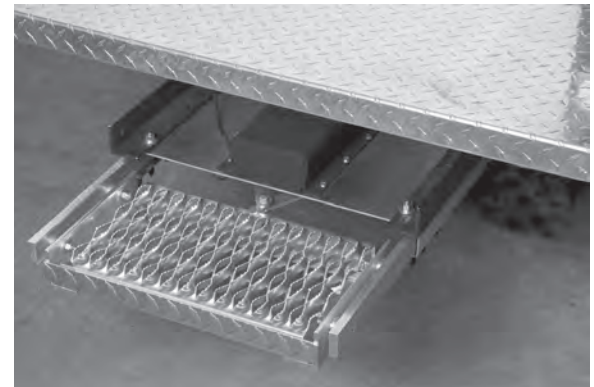
The HVS-1 meets NFPA 1901-09 requirements.



Designed specifically for use on fire and emergency vehicles. May be retrofitted onto existing apparatus.

The open diamond pattern stepping surface is 15" wide x 9.5" deep. The surface is a non-skid surface to provide traction and safety.

The HVS-1 only requires 20" wide x 11" deep mounting surface with an additional 8" clearance behind unit for the retracted arms allowing it to fit almost anywhere.



The HVS-1 is designed to sustain a static load of 500 lbs. This should be taken into account in determining strength required of mounting surface.

The HVS-1 only needs 3" spacing below mounting surface to clear components.

MODEL	DESCRIPTION	WT./@ IN LBS.
HVS-1	Horizontal Vehicle Step	24.1

FIGURE 1 - FIELD WIRING DIAGRAM

MODE OF OPERATION

- * PROVIDE POWER TO HVS-1

EXTEND MODE:

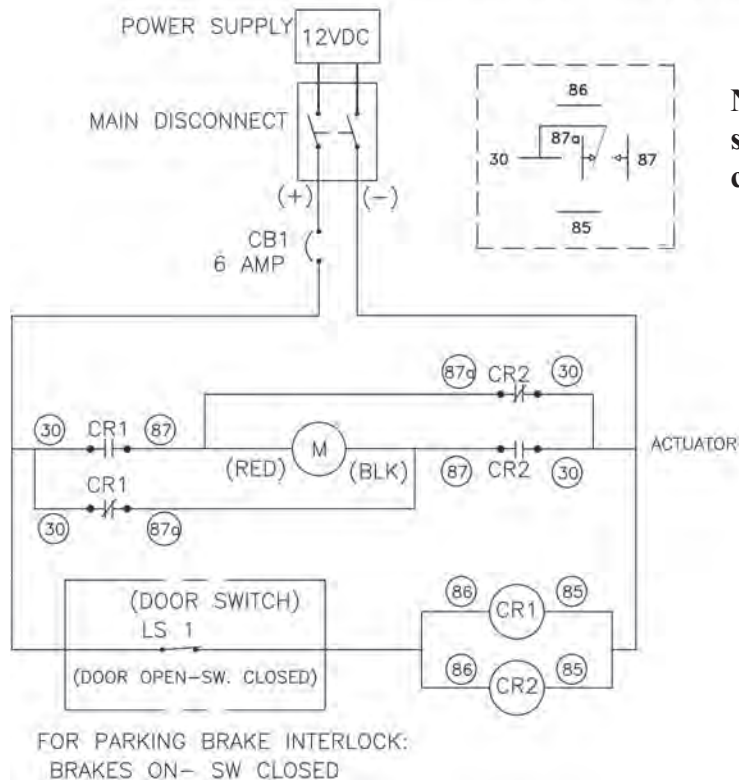
- * STEP WILL AUTOMATICALLY EXTEND AS SOON AS THE DOOR IS OPENED.
- * STEP WILL REMAIN EXTENDED SO LONG AS DOOR REMAINS OPEN.

RETRACTED MODE:

- * STEP WILL AUTOMATICALLY RETRACT AS SOON AS THE DOOR IS CLOSED.
- * STEP WILL REMAIN RETRACTED AS LONG AS DOOR REMAINS CLOSED.

ITEM	DESIGNATION	PART NO.	DESCRIPTION	QTY.
1	(M)	3094-200-133	Actuator	1
2		0000-025-101	Fuseholder	1
3	CB1	3094-200-157	Circuit Breaker, 6 Amp, Self Resetting	1
4	LS1	3097-270-105	Door Switch	1
5	CR1, CR2	3094-200-163	Relay	2
6		3094-200-165	Connector w/Terminals	2
7		3097-270-113	Butt Splice, Blue	4

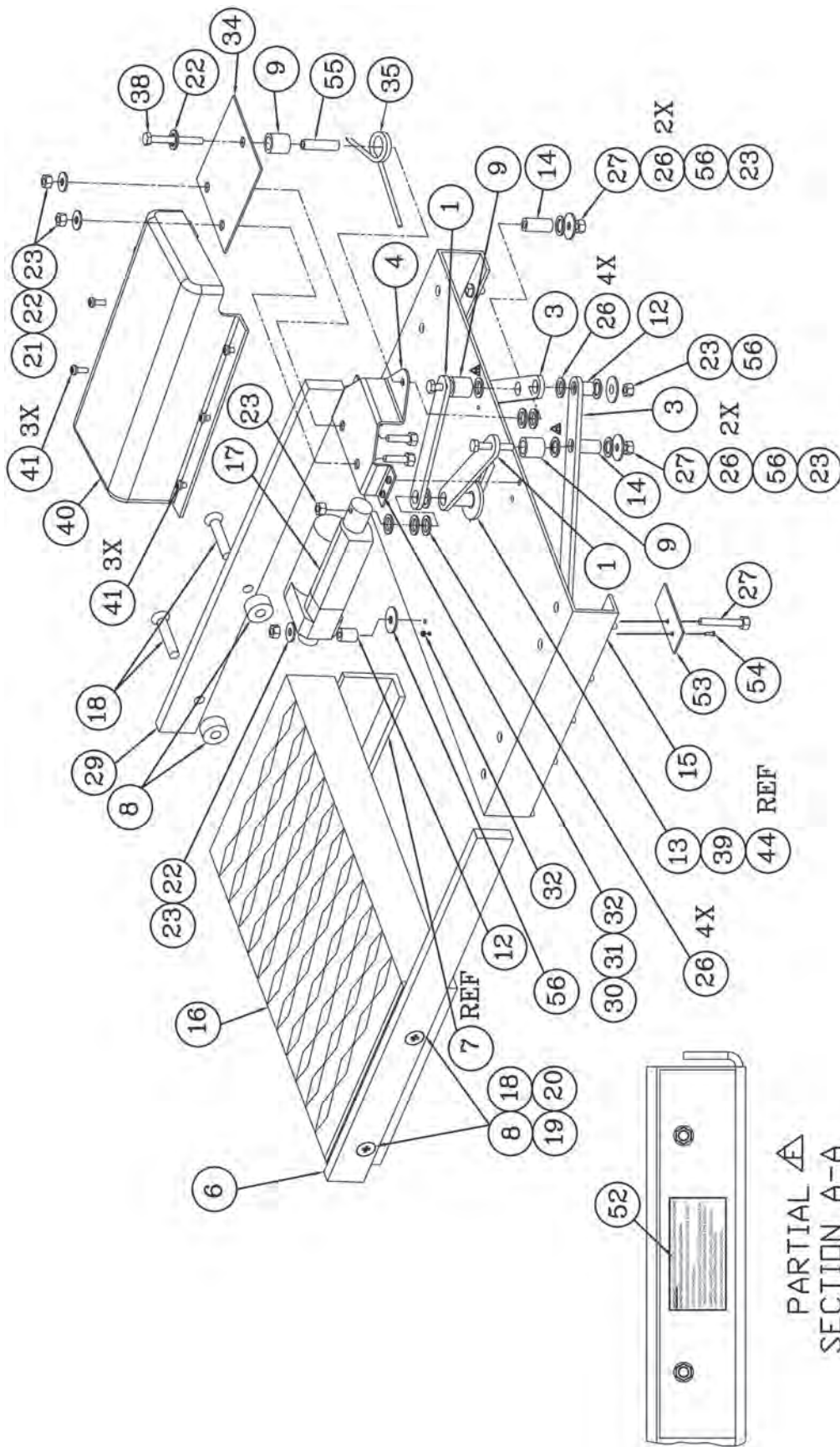
NOTE:
CIRCLED NUMBERS ARE NUMBERS MARKED ON DEVICE.
COLOR IN BRACKETS- DEVICE WIRE COLORS

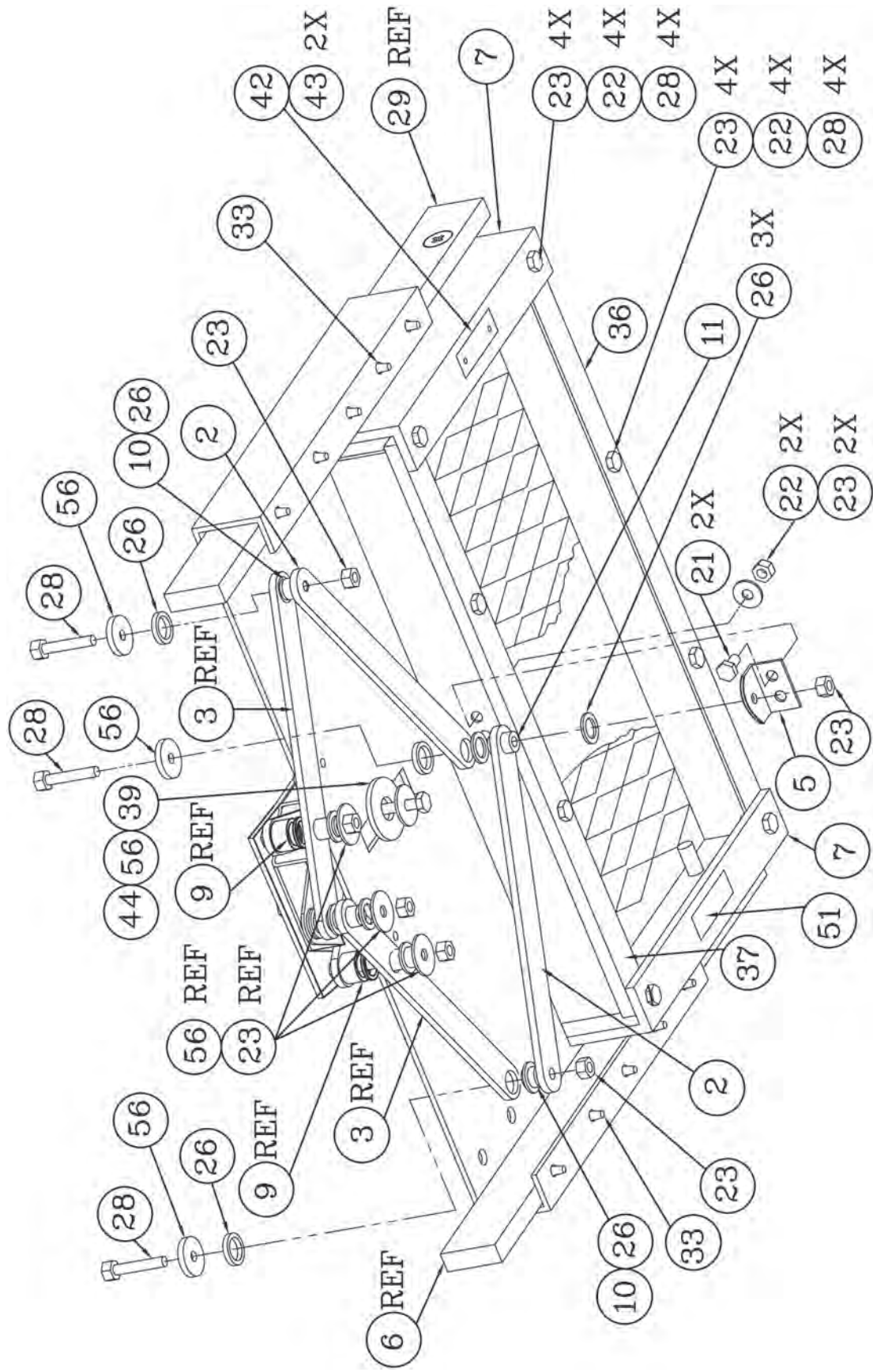


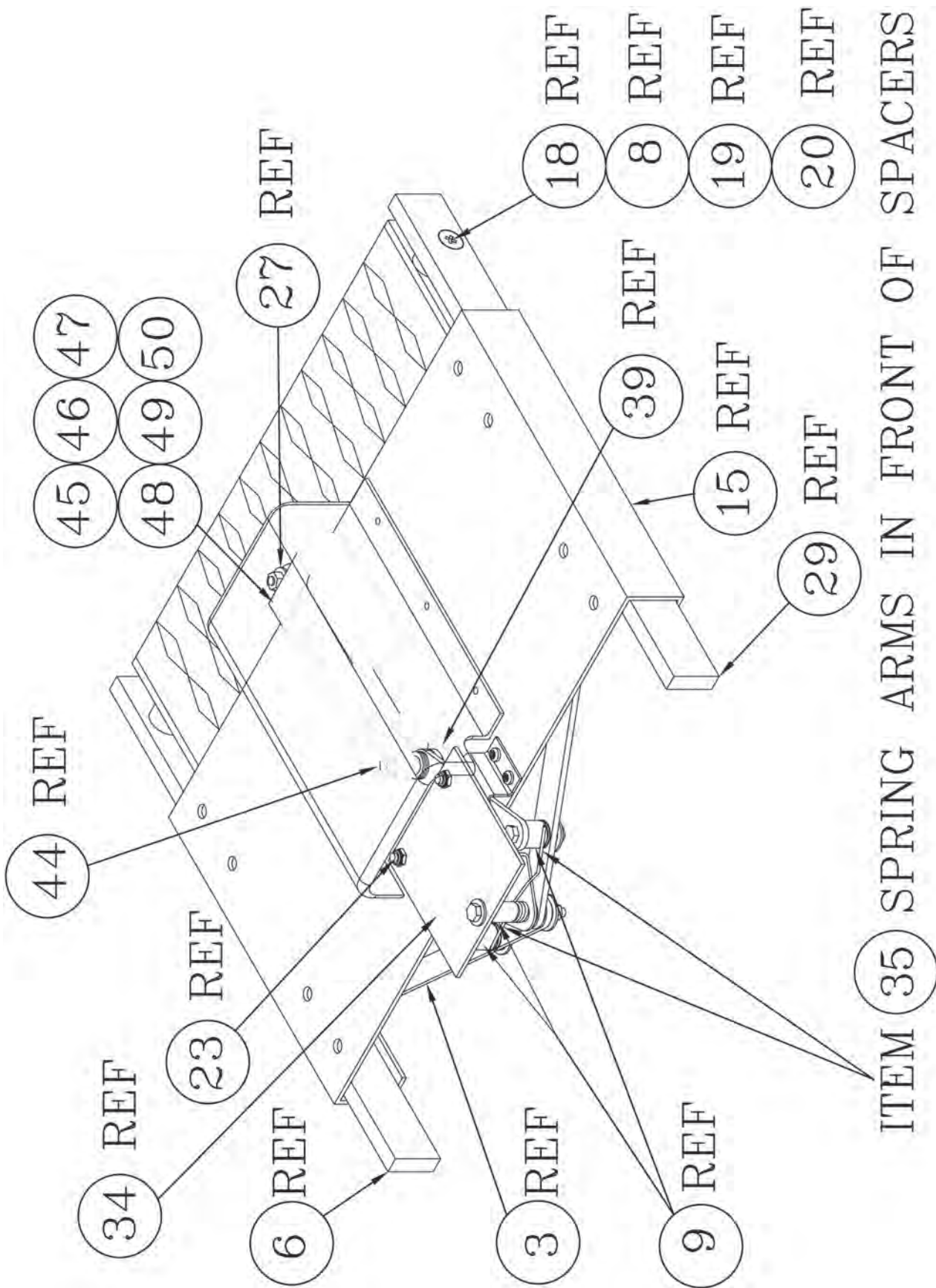
Note: Door switch and relays should be in waterproof compartments.

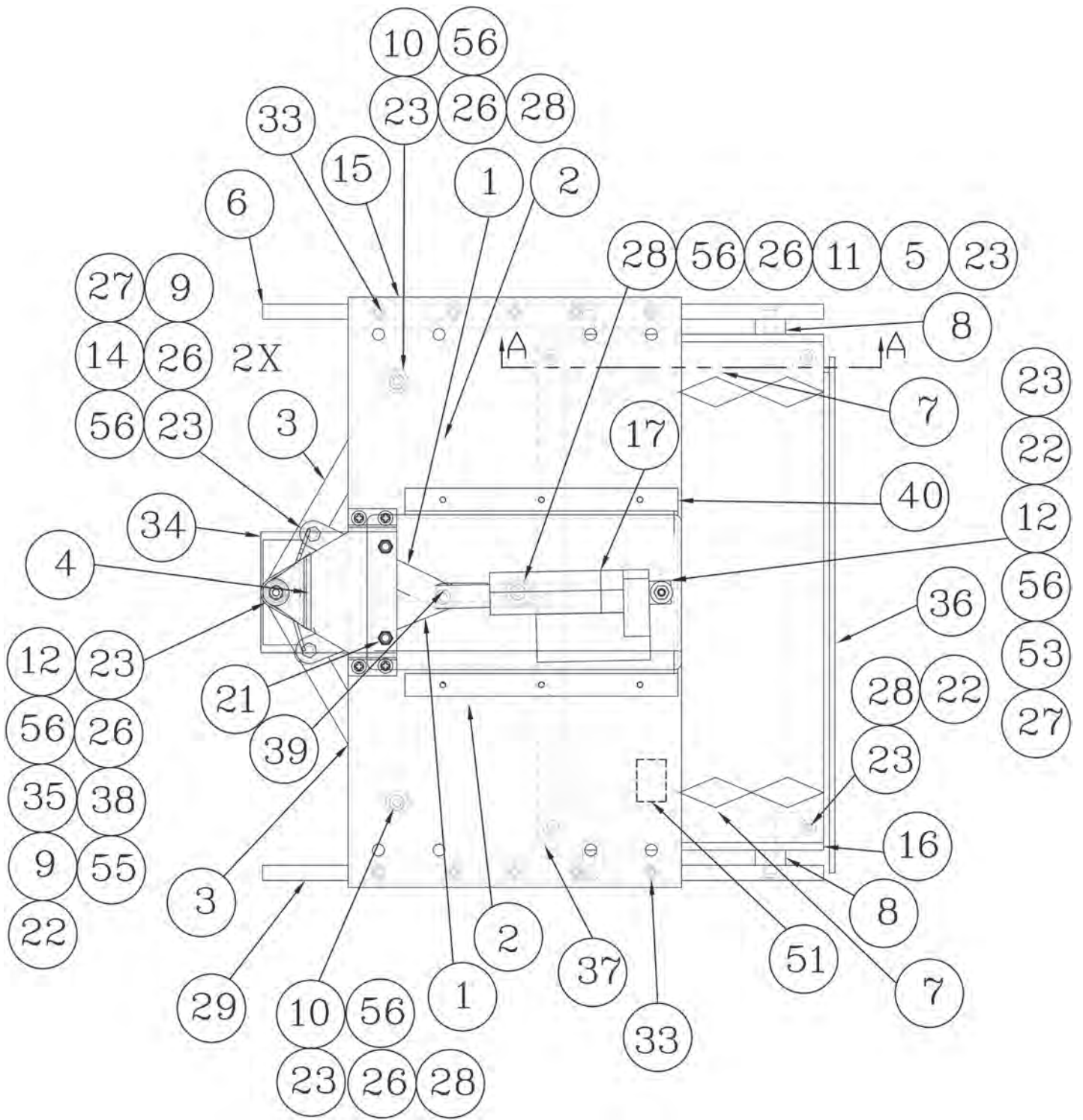
Parts Breakdown

ITEM	PART NO.	DESCRIPTION	QTY.	ITEM	PART NO.	DESCRIPTION	QTY.
1	3094-200-101	Linkage, Short A	2	30	9010-242008	10-32 x 1/2" Screw ZPS	4
2	3094-200-103	Linkage, Long A	2	31	9014-111900	#10 Washer ZPS	4
3	3094-200-105	Linkage, Long B	2	32	9013-172000	10-32 Nut ZPS	5
4	3094-200-107	Actuator Bracket	1	33	3094-200-137	3/16" Tree Rivits	10
5	3094-200-109	Step Bracket	1	34	3094-200-149	Actuator Bracket Top	1
6	3094-200-111	Step Rail Right	1	35	3094-200-171	Step Servo Spring	1
7	3094-200-113	Grating Cap	2	36	3094-200-143	Strut Strength Angle	1
8	3094-200-115	Spacer, 3/8 ID x 1 OD x .5	4	37	3094-200-145	Strut Strength Plate	1
9	3094-200-117	Spacer, 1/2 ID x 3/4 OD x 1	3	38	9010-102548	1/4-20 x 3" Hex Screw	1
10	3094-200-119	Spacer, 1/4 ID x 1/2 OD x .34	2	39	3094-200-181	Washer, 1/2 ID x 2 OD, 1/16 Nylon	2
11	3094-200-121	Spacer, 1/4 ID x 1/2 OD x .59	1	40	3094-200-161	Actuator Cover	1
12	3094-200-123	Spacer, 1/4 ID x 1/2 OD x .65	2	41	9025-172006	10-32 x 3/8" Screw	6
13	3094-200-125	Spacer, 1/4 ID x 1/2 OD x .913	1	42	0000-000-112	Serial # Tag - Metal	1
14	3094-200-127	Spacer, 1/4 ID x 1/2 OD x 1.281	2	43	9120-101103	#4 x 3/16 Drive Screw Type U	2
15	3094-200-129	Step Housing	1	44	9015-102536	Screw Hex 1/4-20 x 2-1/4"	1
16	3094-200-131	Grating	1	45	0000-061-020	22-20 GA. Cavity Seal, Purple	2
17	3094-200-133	Actuator	1	46	0000-061-018	20-18 GA. Cavity Seal, Green	2
18	9010-293732	3/8-16 x 2" Screw	4	47	0000-060-002	Weather Pack Housing, Female	2
19	9014-113700	3/8" Flat Washer	4	48	0000-060-001	Weather Pack Housing, Male	2
20	9013-113700	3/8-16 Nut	4	49	0000-062-180	20-18 GA. Weather Pack Terminal, Male	2
21	9010-102512	1/4-20 x 3/4" Hex Screw	4	50	0000-062-181	20-18 GA. Weather Pack Terminal, Female	2
22	9014-112500	Washer, 1/4 x 5/8 OD SAE S/S	14	51	3094-005-190	Label, "WARNING DISCONNECT FROM POWER"	1
23	9015-172500	1/4-20 Nut	18	52	0000-000-163	Label, Actuator and Linkage Maint	1
26	3097-105-130	Washer, 1/2 ID x 3/4 OD, 1/16 Nylon	21	53	3094-200-183	Stiffener Plate	1
27	9015-102532	1/4-20 x 2" Hex Screw	3	54	9010-242010	#10-32 x 5/8" ZPS Machine Screw	1
28	9015-102516	1/4-20 x 1" Hex Screw	11	55	3094-200-147	Spacer, 1/4 ID x 1/2 OD x 1.39	1
29	3094-200-135	Step Rail Left	1	56	9014-162500	Washer, 1/4 x 1-1/4 OD Fender, SZP	8

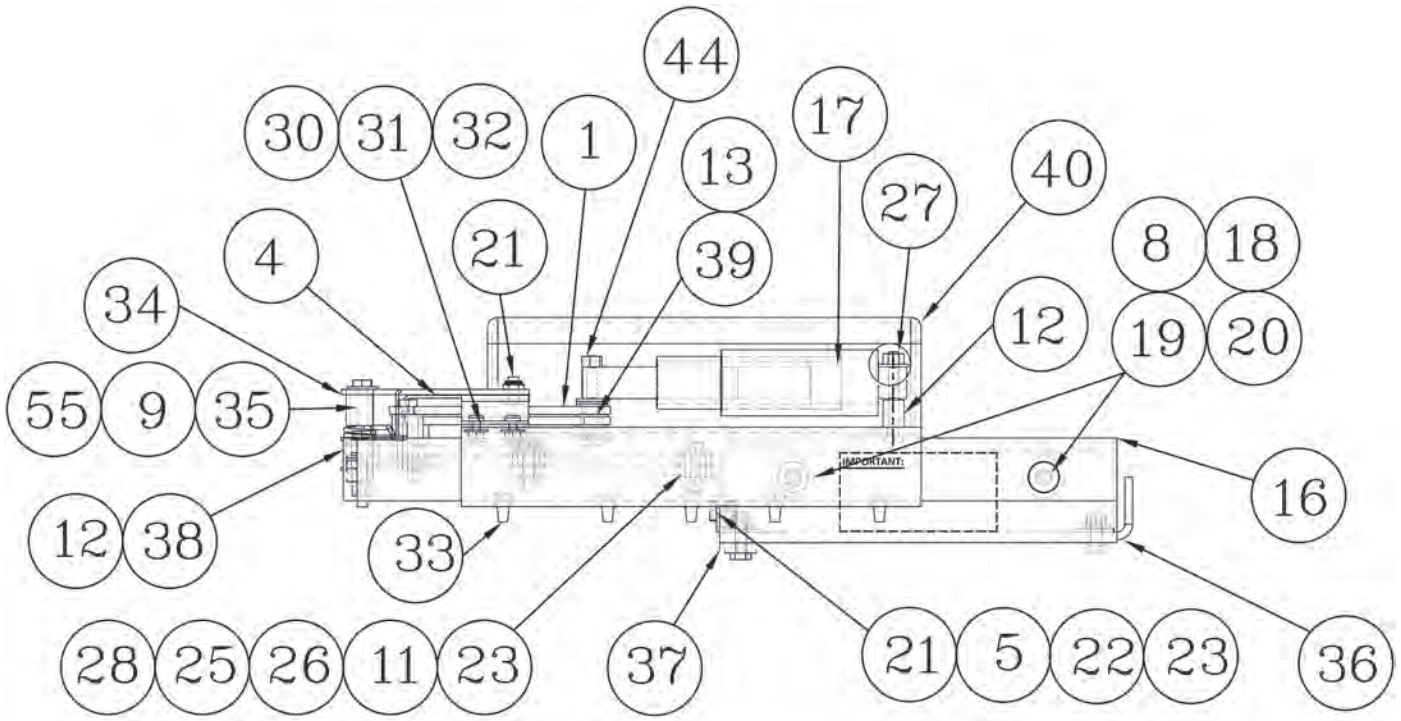






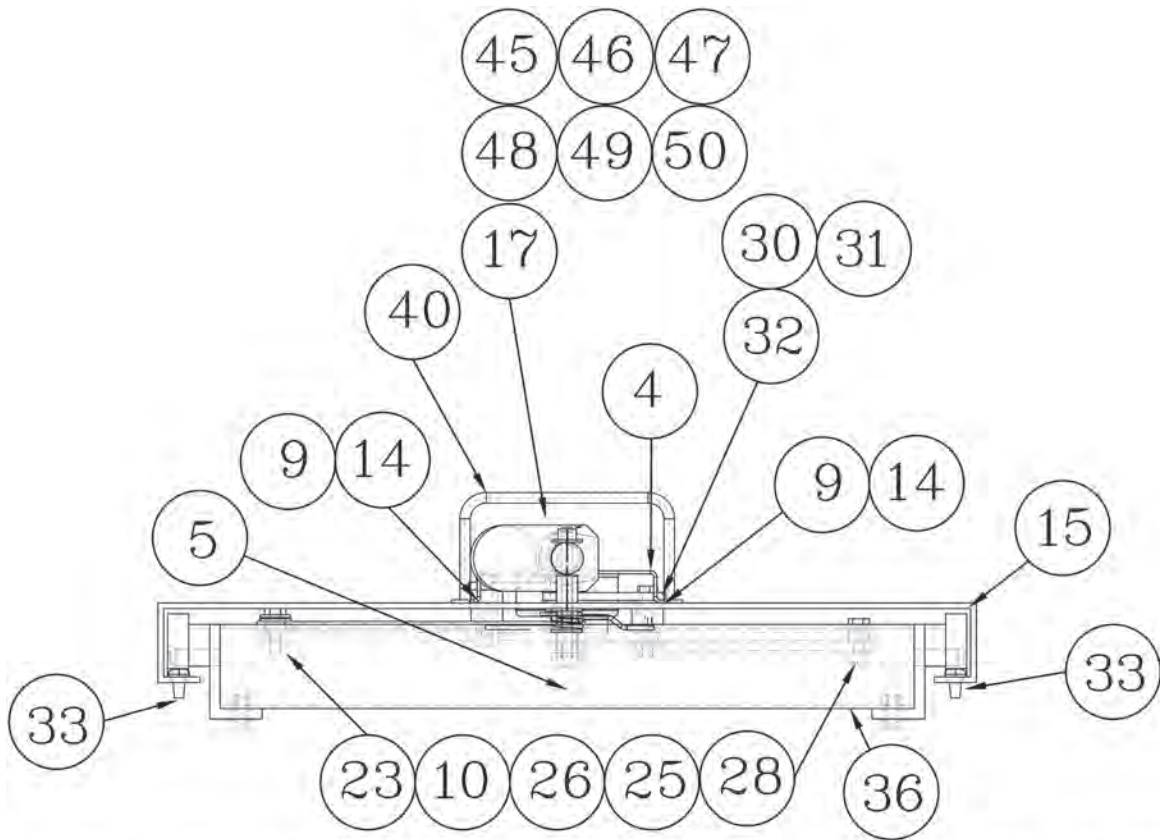


TOP VIEW



ALL ITEMS IN THIS VIEW
ARE FOR REFERENCE.

LEFT HAND VIEW



ALL ITEMS IN THIS VIEW ARE FOR REFERENCE.

REAR VIEW

Maintenance

A. Semi-Annual Required Maintenance

IMPORTANT: Minimum of semi-annual maintenance is required under harsher conditions. Where the excess build-up of road salt, dirt...etc. occurs, a more frequent maintenance schedule should be performed. A 3 month interval or more may be necessary.

WARNING: DO NOT pressure wash the electric actuator!

1. Visually inspect step linkages for excess dirt build-up, wear of the nylon buttons or debris in the rail tracks. Clean parts using mild soap and water. Dry thoroughly.
2. Lubricate all joints and pivots with CRC Stor & Lube long-term lubricant and rust preventative #03032. Excess lubrication should be wiped off.
3. Lubricate the rail tracks with door jam grease where the sides of the stop rails run along the rail tracks.



Ziamatic Corp.

10 West College Avenue, P.O. Box 337, Yardley, PA 19067-0587 • (215) 493-3618 • FAX: (215) 493-1401

www.ziamatic.com

TOLL FREE: 800-711-3473

*ZICO is a registered trademark for fire, safety and marine products made by Ziamatic Corp.

Copyright Ziamatic Corp. 6-18

WARRANTY REGISTRATION

PLEASE MAIL OR FAX A COPY TO ZICO AT 866-493-1401 TO REGISTER YOUR UNIT

FIRE DEPARTMENT NAME: _____ CONTACT PERSON: _____

PHONE NO. _____ FAX NO. _____

STREET ADDRESS: _____ P.O. BOX: _____

CITY: _____ STATE: _____ ZIP: _____

UNIT MODEL NO.: _____

SERIAL NO. ON UNIT: (SEE TAG) _____

INSTALLED ON: (VEHICLE MFG.) _____ DELIVERED: (DATE) _____

WAS UNIT INSTALLED ON: _____ NEW VEHICLE

_____ RETROFITTED ONTO EXISTING VEHICLE

WHERE DID YOU HEAR ABOUT OUR PRODUCT?

_____ MAGAZINE AD (SPECIFY) _____

_____ DEALER (SPECIFY) _____

_____ VEHICLE MFG. (SPECIFY) _____

_____ ANOTHER DEPARTMENT (SPECIFY) _____

_____ OTHER (SPECIFY) _____