

**QUIC-MOUNT™ VARIABLE STRUT MOUNTS - 3" ROUND
MODELS VM-3RS-D & VM-3RS-Q
PARTS AND INSTRUCTION MANUAL**

Features:

- Tightly secure two or four 3" round struts against a vertical surface
- Struts rest in holes of the lower bracket, then strap firmly into the adjustable upper bracket
- Beefy, 2" wide nylon straps provide more surface area for an extraordinarily powerful grip
- Lower bracket is specially-designed to support the substantial weight and withstand the repeated abuse of stowage and removal
- Includes ABC base channel for quick and easy mounting of strap brackets

**VM-3RS-D****Specs:**

- Upper brackets are durable, powder-coated aluminum
- Lower bracket is durable, powder-coated steel with an extra layer of high-density polyethylene plastic
- Straps are all-weather, UV-resistant nylon with hook & loop closure

MODEL	DESCRIPTION	WT ./@ IN LBS.
VM-3RS-D	3" round strut bracket - double	6.5
VM-3RS-Q	3" round strut bracket - quad	12.7

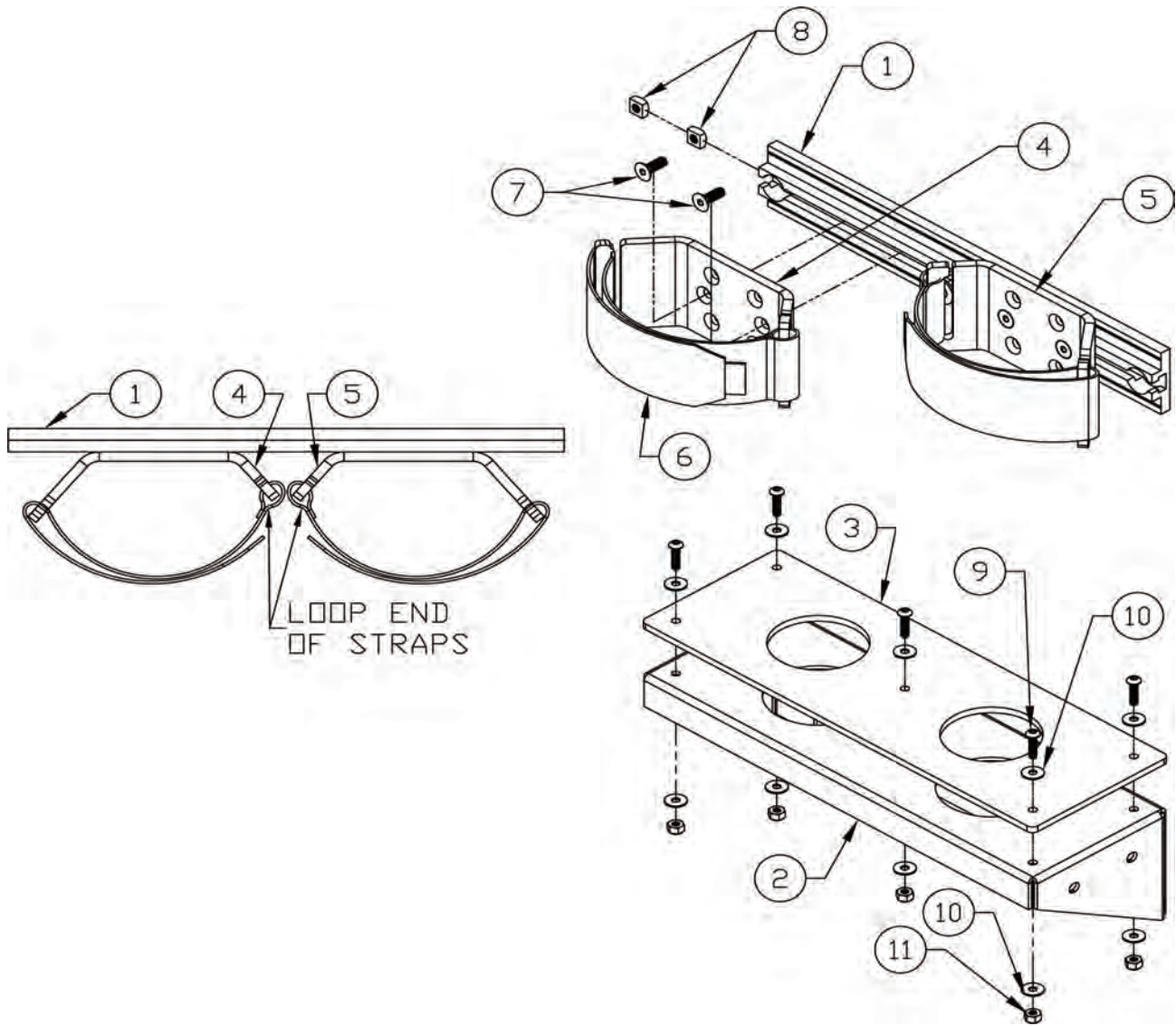


Figure 1A - Model VM-3RS-D

ITEM	PART NUMBER	DESCRIPTION	QTY.
1	3085-670-101	ABC PROFILE-DUAL STRUTS	1
2	3085-675-103	STRUT BRACKET BASE, DUAL	1
3	3085-675-105	LINER, DUAL	1
4	3085-675-107	BRACKET, STRAP-LH	1
5	3095-260-131	BRACKET, STRAP-RH	1
6	3099-734-105	STRAP, UMVS-0811-11	2
7	9010-162512	SCREW, 1/4-20x3/4 FLAT HD ZPS	4
8	9012-242500	NUT, 1/4-20 SQUARE, ZPS	4
9	9010-352012	SCREW, #10-32 X 3/4". BUTTON HD ALLEN CAP, ZPS	5
10	9014-111900	WASHER, #10 REGULAR	10
11	9013-172000	NUT, #10-32 NYLON LOCK	5

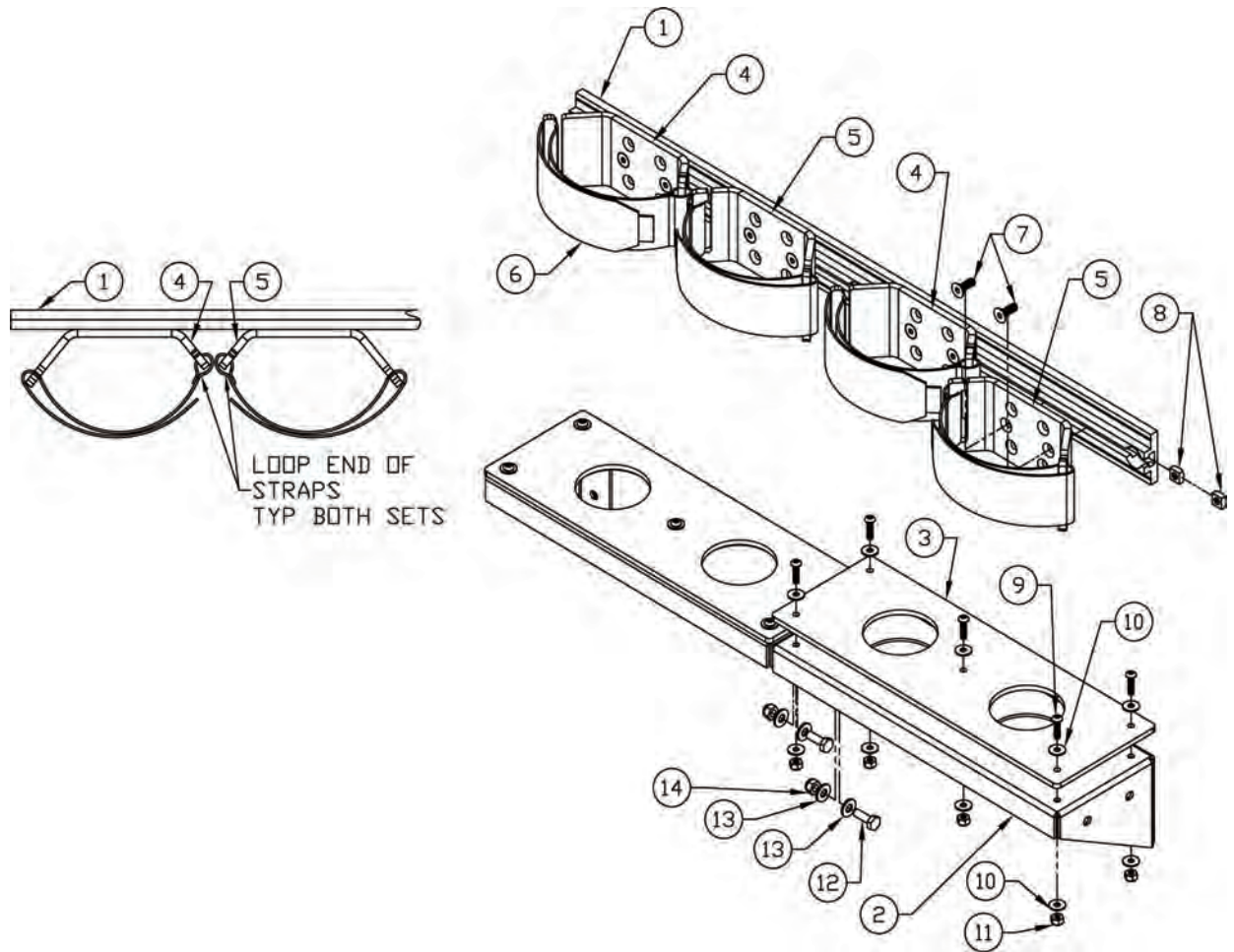


Figure 1B- Model VM-3RS-Q

ITEM	PART NUMBER	DESCRIPTION	QTY.
1	3085-675-101	ABC PROFILE-QUAD STRUTS	1
2	3085-675-103	STRUT BRACKET BASE, DUAL	2
3	3085-675-105	LINER, DUAL	2
4	3085-675-107	BRACKET, STRAP-LH	2
5	3095-260-131	BRACKET, STRAP-RH	2
6	3099-734-105	STRAP, UMVS-0811-11	4
7	9010-162512	SCREW, 1/4-20x3/4 FLAT HD ZPS	8
8	9012-242500	NUT, 1/4-20 SQUARE, ZPS	8
9	9010-352012	SCREW, #10-32 X 3/4", BUTTON HD ALLEN CAP, ZPS	10
10	9014-111900	WASHER, #10 REGULAR	20
11	9013-172000	NUT, #10-32 NYLON LOCK	10
12	9010-102512	SCREW, 1/4-20x3/4 HEX HEAD, ZPS	2
13	9014-112500	WASHER, 1/4 REGULAR, ZPS	4
14	9013-172500	NUT, 1/4-20 NYLON LOCK ZPS	2

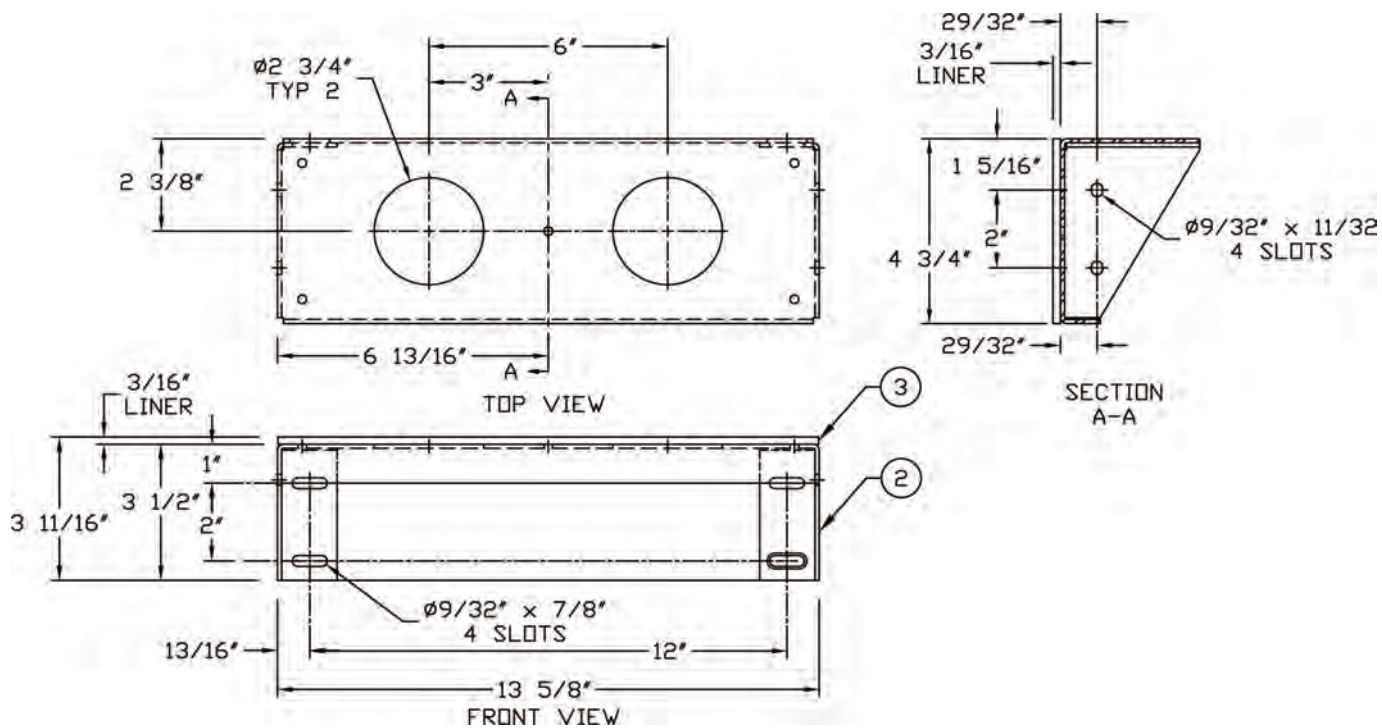


Figure 2 - Base Dimensions

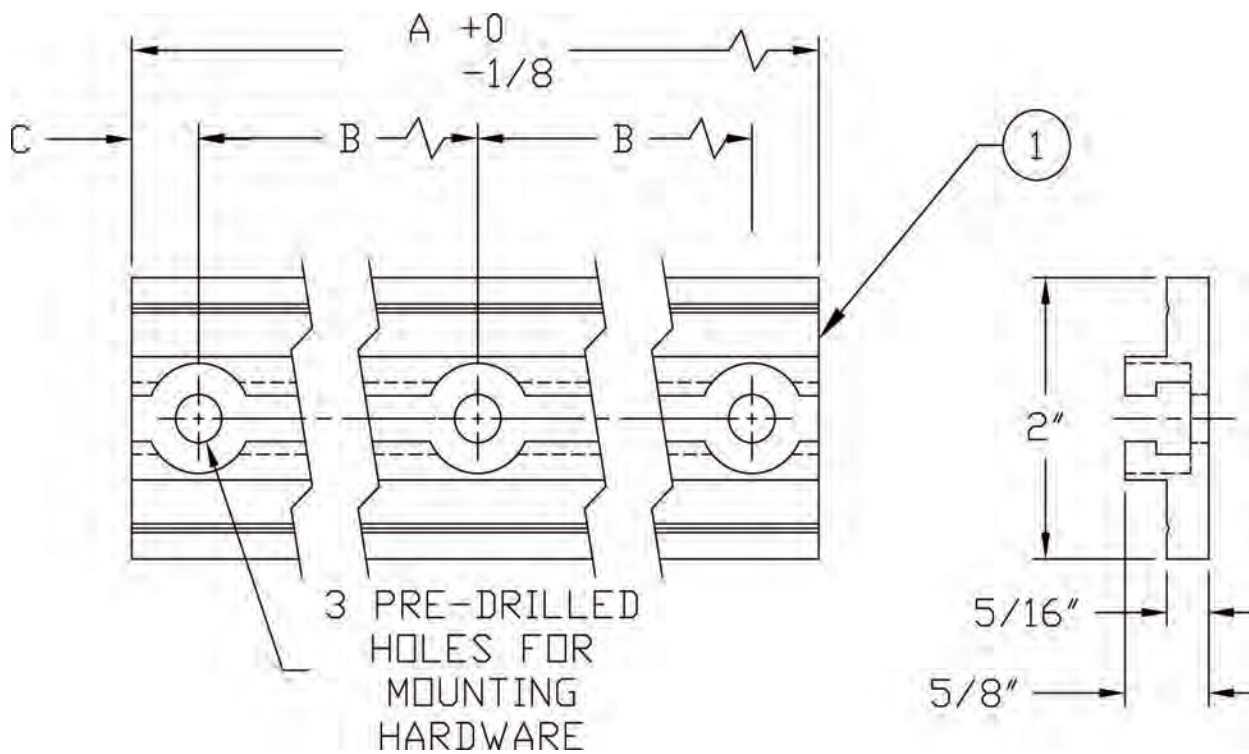


Figure 3 - Channel Dimensions

Part Number	Description	A	B	C
3085-670-101	Dual Strut	13 5/8	6	13/16
3085-675-101	Quad Strut	27 1/4	13	5/8

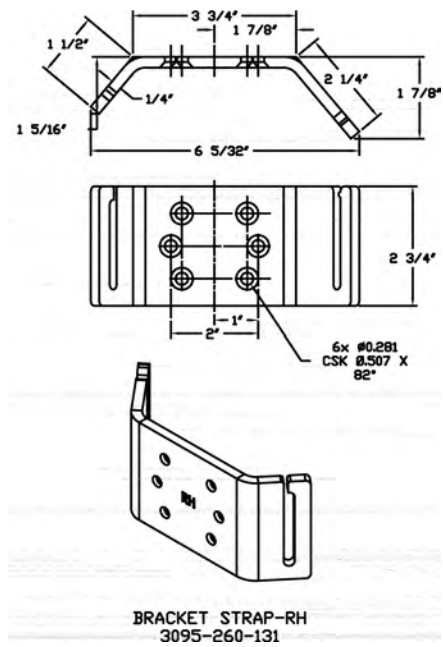


Figure 4A - Strap Bracket - Right Hand

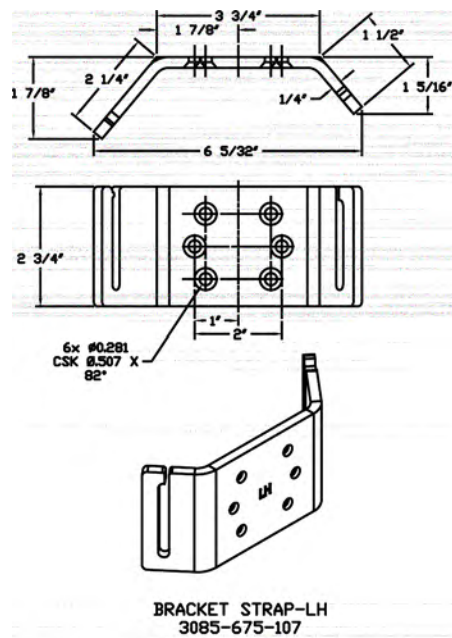


Figure 4B - Strap Bracket - Left Hand

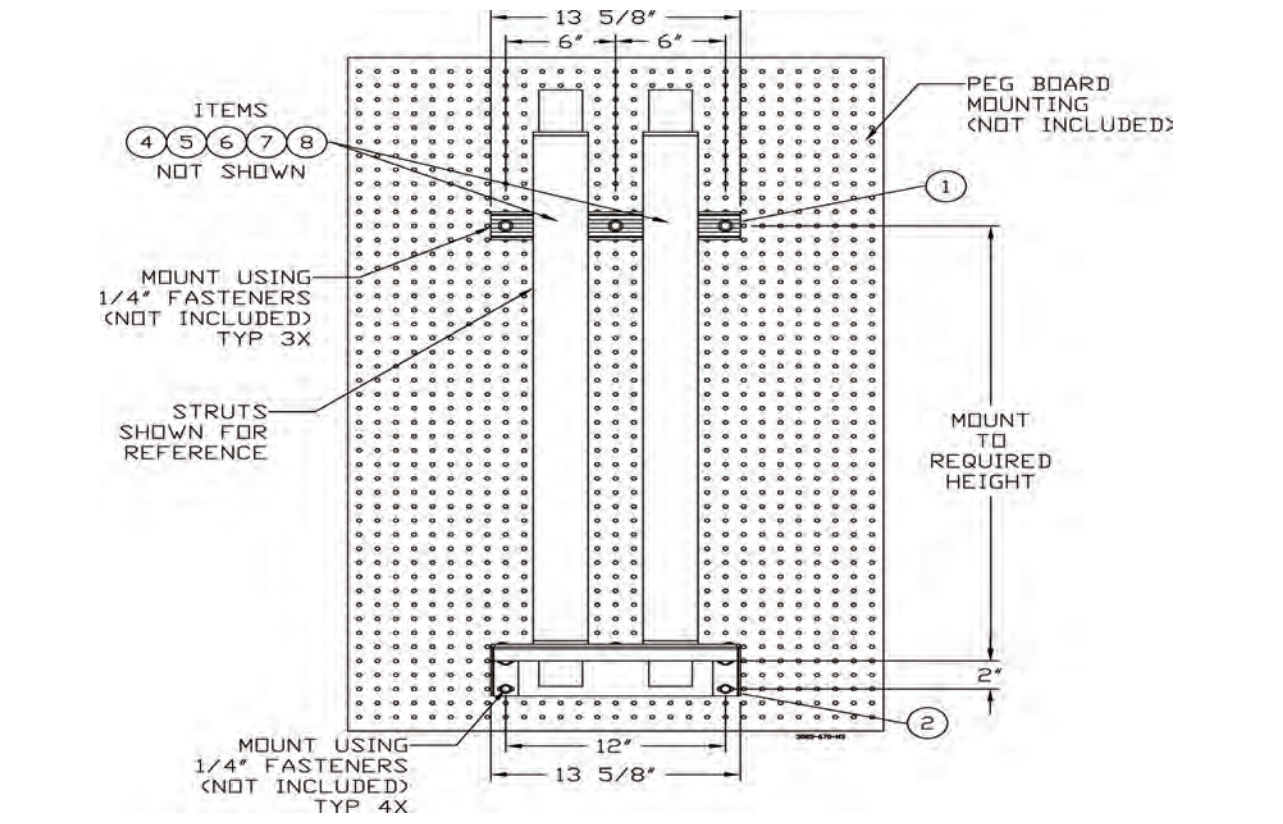
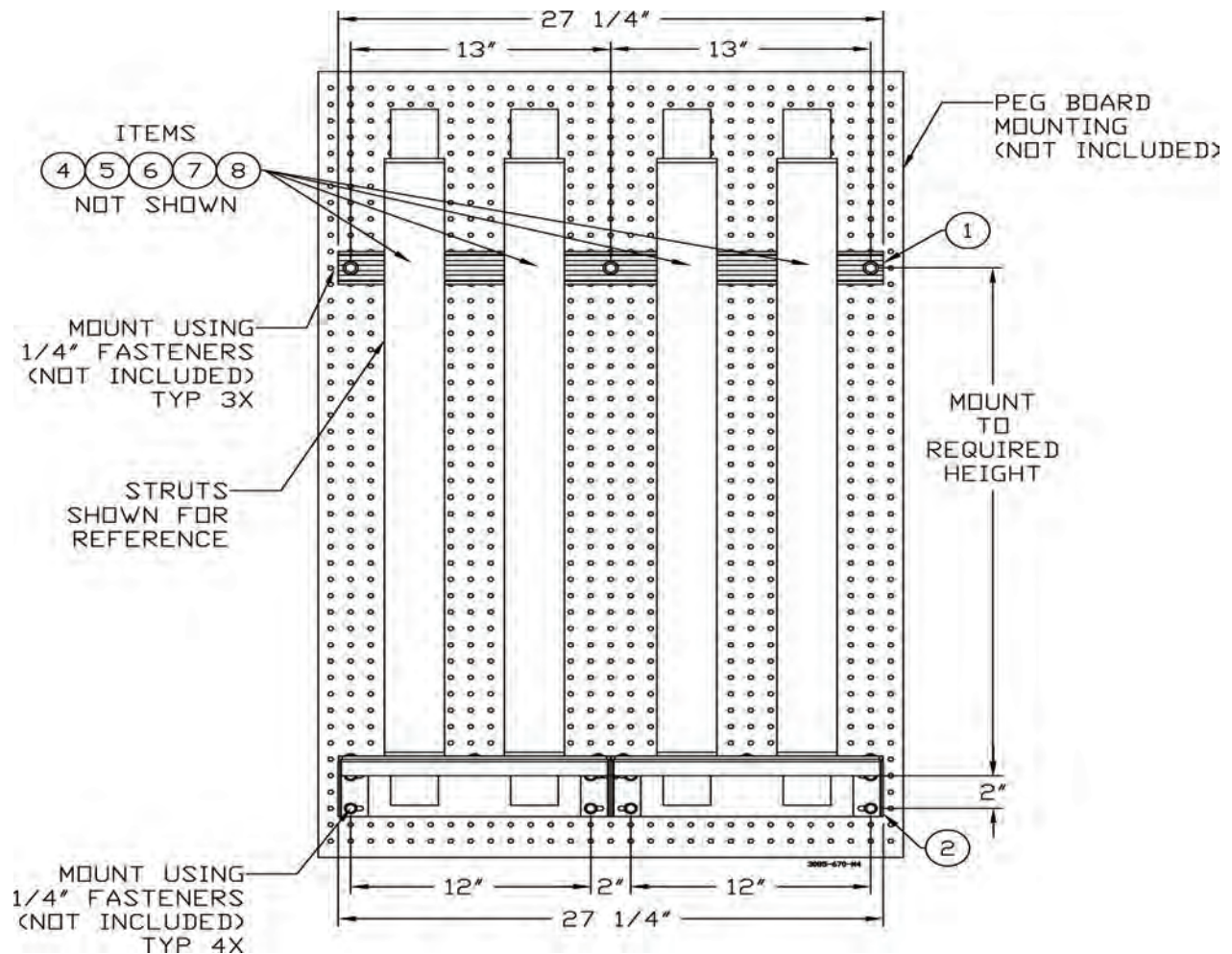


Figure 5 - Typical Mounting Setup

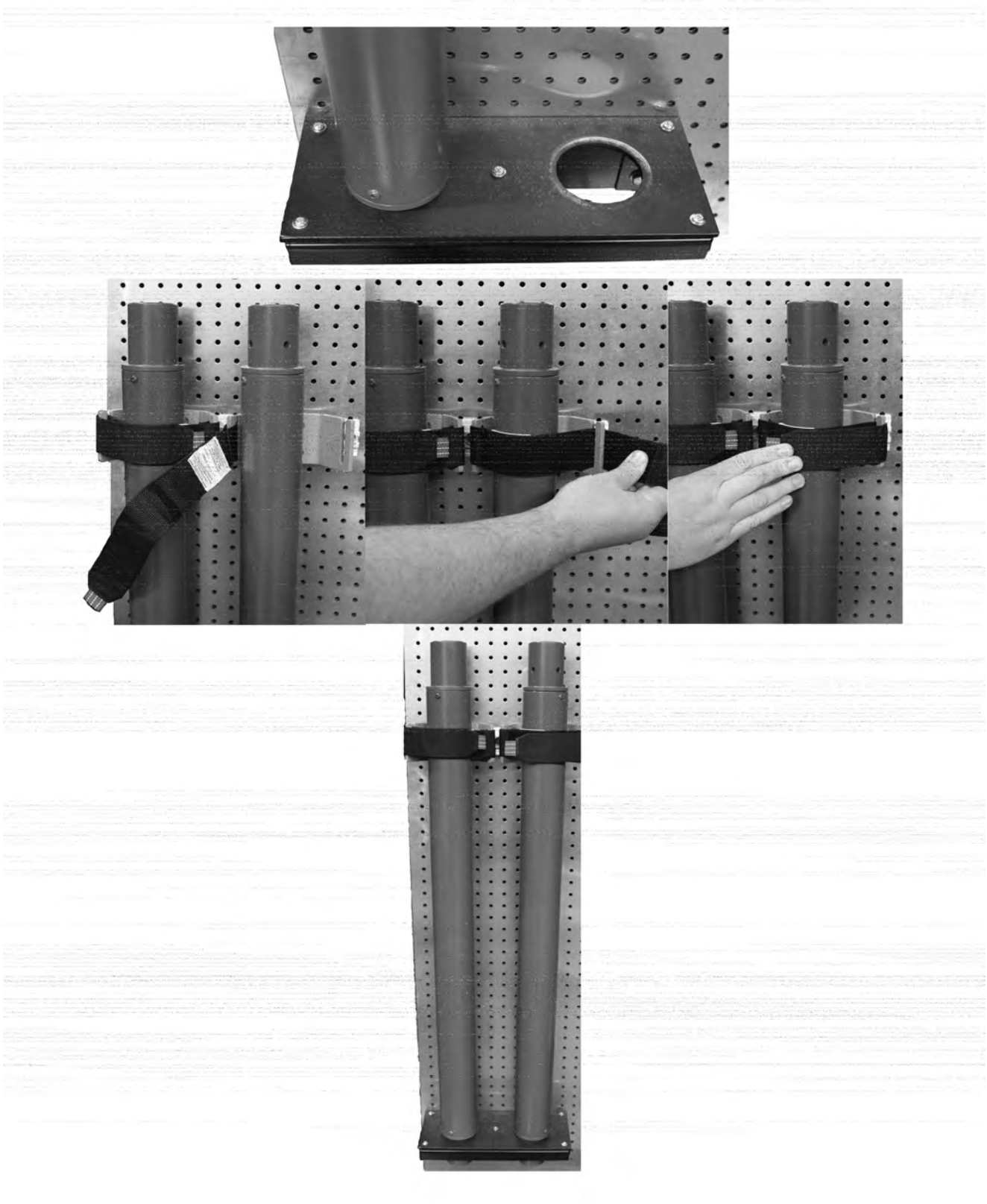


Figure 6 - Securing the Strut

Note: Within this text, item numbers for parts are shown in parenthesis ().

I. PART IDENTIFICATION & GENERAL OVERVIEW OF THE ASSEMBLY

1. Figures 1A & 1B show the parts breakdowns of the Variable Strut Mount assemblies.
2. Figure 2 shows the overall size and dimensions for the Strut Bracket Base (2) and Liner (3).
3. Figure 3 shows the overall size and dimensions for the ABC Profile (1).
4. Figures 4A & 4B show the overall size and dimensions for the Strap Brackets (4 & 5).
5. Figure 5 shows a typical mounting set-up for the Strut Mount assembly on a peg board with a hole pattern of 1"x1"x9/32 diameter holes. (The peg board is not required or included).

II. INSTALLATION

1. Mount the ABC Profile (1) and the Strut Bracket Bases (2) Assembly using 1/4" fasteners (Not supplied). See Figures 1 & 5.
2. Assemble the LH Bracket Straps (4) and the RH Bracket Straps (5) onto the ABC Profile (1) using the fasteners shown in Figure 1.
3. Slide the loop end of the Straps (6) onto the LH and RH Bracket Straps. See Figure 1.

III. SECURING THE STRUT

1. Place the bottom of the Strut into one of the holes in the Strut Bracket Base (2).
2. Place and hold the Strut against the LH Bracket Strap (4) or RH Bracket Strap (5). See Figure 6.
3. Place the Strap (6) around the strut. Wrap the Strap around the open ended slot of the Bracket Strap. See Figure 6.
4. While maintaining tension on the Strap, pull away from the Bracket to tighten then connect the hook pad and the loop pad of the Strap to secure the strut.

IV. REMOVING THE STRUT

1. Grab the end of the Strap at the red tab and pull away from the Bracket to release the hook & loop connection.
2. Pull the tool towards you, through the loosened strap. The Strap will free itself as you pull the strut.



Ziamatic Corp.

10 West College Avenue, P.O. Box 337, Yardley, PA 19067-0587 • (215) 493-3618 • FAX: (215) 493-1401

www.ziamatic.com

TOLL FREE: 800-711-3473

*ZICO is a registered trademark for fire, safety and marine products made by Ziamatic Corp.

Copyright Ziamatic Corp. 10-22