

# QUIC-RELEASE® HORIZONTAL CYLINDER LIFT

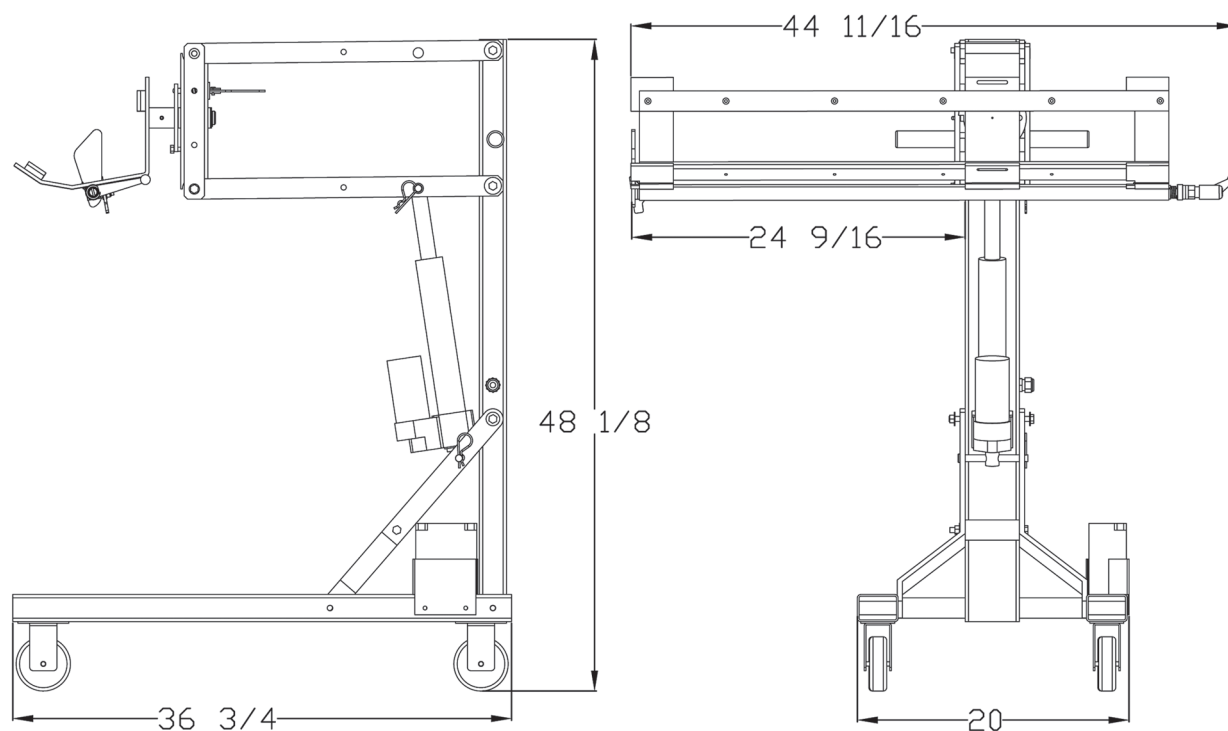
## MODEL QR-CL-H

### PARTS AND INSTRUCTION MANUAL

**ZICO®**

**3030PM19**

Rev. 9-10-15



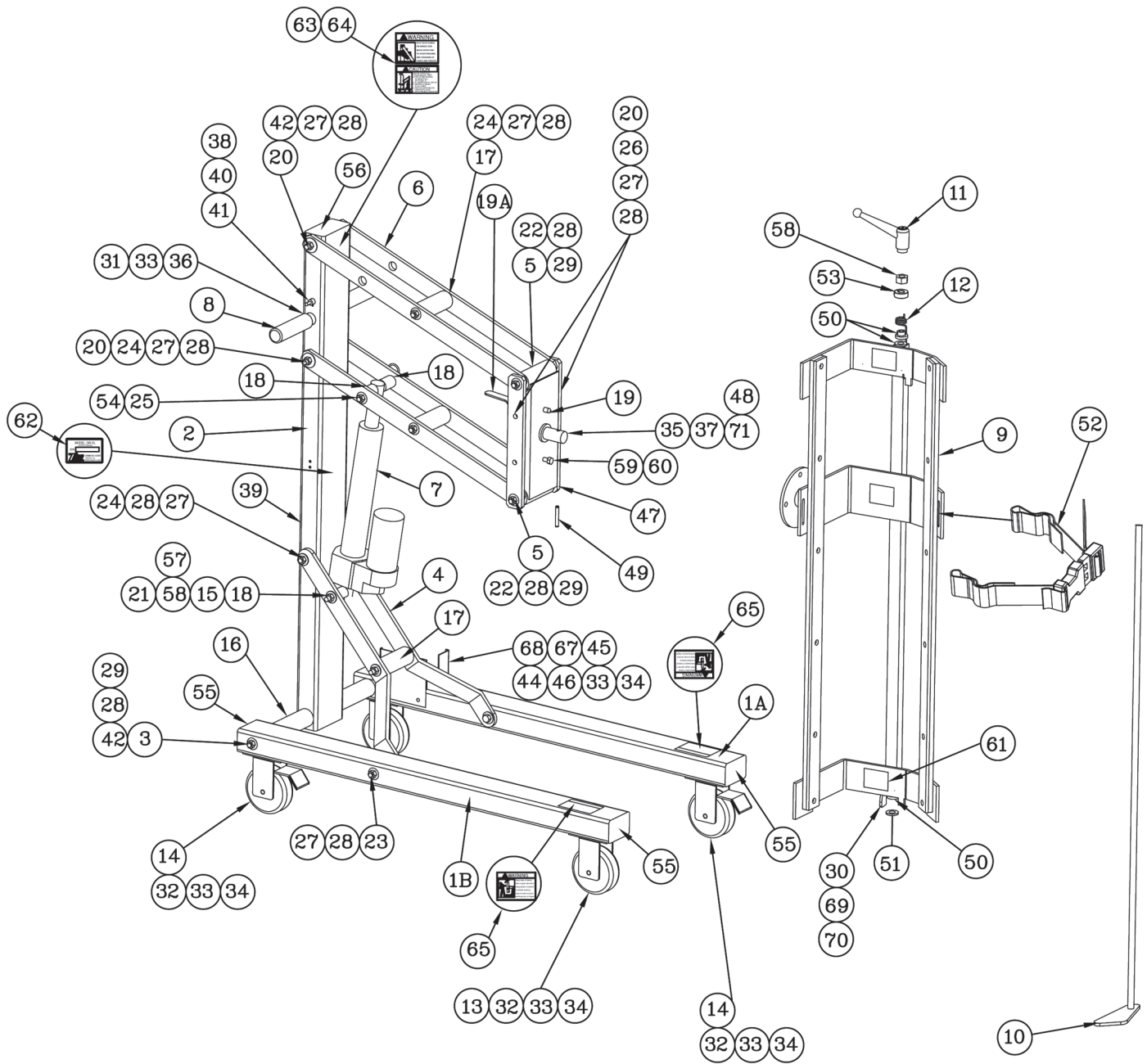
The Zico Horizontal Cylinder Lift raises and lowers "M" through "J" cylinders. Unit has a maximum lifting capacity of 200 lbs., and a maximum lift height of 47".

MODEL	DESCRIPTION	WT./@ IN LBS.
QR-CL-H	Complete System	165.0



The unit operates off of a supplied 12v battery. A charger is provided with the unit.





ITEM NO.	PART NO.	DESCRIPTION	QTY.
1A	3030-250-101	Leg, Left	1
1B	3030-250-102	Leg, Right	1
2	3030-250-103	Main Upright	1
3	3030-250-105	Tie Rod	1
4	3030-250-107	Forward Brace	2
5	3030-250-163	Threaded Spacer	2
6	3030-250-111	Lifting Arms	4
7	3098-105-113	Actuator	1
8	3030-250-113	Handle	1
9	3030-255-905	Rack Assembly	1
10	3030-255-105	Foot Assembly	1
11	3030-255-159	Handle	1
12	3030-255-161	Foot Tube Spring	1
13	3030-250-185	Swivel Casters (Hard Rubber)	2
14	3030-250-183	Swivel Casters W/Brakes (Hard Rubber)	2
15	3030-250-157	Spacer, Actuator, Short	1
16	3030-250-129	Spacer, 1.5 OD x 1.125 ID x 5 LG, AL	2
17	3030-250-131	Spacer, 1.5 OD x 1.125 ID x 4 LG, AL	3
18	3030-250-159	Spacer, Actuator, Long	3
19	3030-255-905	Hub Assembly	1
19A	3030-255-109	Tray Lock Handle	1
20	3030-250-137	Bushing, Pivot, .744 OD x 385 ID x .390 LG.	12
21	9018-105088	Screw, 1/2ø x 5.5, HH, GR. 8	2
22	9015-103728	Screw, 3/8ø-16 x 1 3/4, HH	6
23	9015-103764	Screw, 3/8-16 x 4, HH	2
24	9015-103788	Screw, 3/8-16 x 5 1/2, HH	5
25	9018-175001	Nut, 1/2-13 Hex Nylock Low Profile	1
26	9015-103732	Screw, 3/8-16 x 2, HH	4
27	9013-173700	Nut, 3/8-16 Nylock	15
28	9014-113700	Flatwasher, 3/8ø NOM	30
29	9014-203700	Lockwasher, 3/8ø	6
30	3030-255-151	Foot Stop	1
31	9010-562512	1/4-20 x 1" Rnd Torx Head Bolt	1
32	9010-102516	Screw, 1/4-20 x 1 HH	20
33	9014-112500	Flatwasher, 1/4ø	43

ITEM NO.	PART NO.	DESCRIPTION	QTY.
34	9015-172500	Nut, 1/4-20 Nylon Lock	18
35	3030-255-111	Horizontal Cart Main Shaft	1
36	9014-202500	Lockwasher, 1/4ø Split	1
37	3030-255-121	Horizontal Cart Bearing	2
38	3097-105-145	Boot, Switch	1
39	3030-250-165	Strain relief	1
40	3097-105-146	Washer, Switch Anti-Rot.	1
41	3097-105-144	Switch, Toggle, DPDT, MOM	1
42	9015-103720	Screw, 3/8-16 x 1 1/4 HH, Gr. 5	2
43	3030-250-155	Cord Assembly, Electrical	1
44	3030-250-161	Battery Holder	2
45	3030-250-145	Battery 12 V 85CCA	1
46	9010-102560	Screw, 1/4-20 x 3 3/4 Lg., HH	2
47	3030-255-125	Horizontal Cart Front Rail	2
48	3030-255-155	1" Shaft Snap Ring, .045 Thk.	1
49	9040-102528	Spring Pin .25 X 1.75	1
50	3030-255-157	1/2" Shaft Sleeve Bearing	3
51	3030-255-101	Foot Tube Spacer	1
52	3087-207-105	Strap Assembly	1
53	3030-255-123	Base Post Split Collar	1
54	9014-115000	Flatwasher, 1/2 I.D. SZP	2
55	3030-250-139	Endp, Plastic, 2 x 3	4
56	3030-250-141	End Cap, Plastic, 2 x 4	1
57	9012-105000	Nut, 1/2-13, Jam	1
58	9013-175000	Nut, 1/2-13, Hex Nylock	1
59	9010-313112	5/16 x 3/4 Hex Socket Hd. Shoulder Blt.	1
60	9013-172501	Nut, 1/4-20 Nylock Low Profile	1
61	3097-105-216	4 x 2 Wear Pad	3
62	3030-250-167	Model Number Tag	1
63	3030-250-173	QR-CL Caution Label	1
64	3030-250-175	QR-CL Hand Pinch Warning Label	1
65	3030-250-177	QR-CL Warning Label	2
66	3030-250-171	12V 1/2 Amp (500MA) Trickle Charger	1
67	3030-250-179	Edge Protector 4" Lg.	2
68	3030-250-181	Edge Protector 2 1/2" Lg.	2
69	9013-173100	Nut, 5/16, 18 Nylock	1
70	9014-113100	Flatwasher, 5/16ø NOM.	2

**WARNING:** When moving the QR-CL-H with a cylinder, move the unit slowly with the cylinder in a vertical position. Have the bottom of the cylinder as close to the floor as possible to avoid tipping over.

**WARNING:** QR-CL-H should always be stored with the Rack Assembly (9) in the upright/vertical position and the Footplate (10) firmly against the floor. Do not leave QR-CL-H in a raised or horizontal position unattended. A tip over situation may occur.

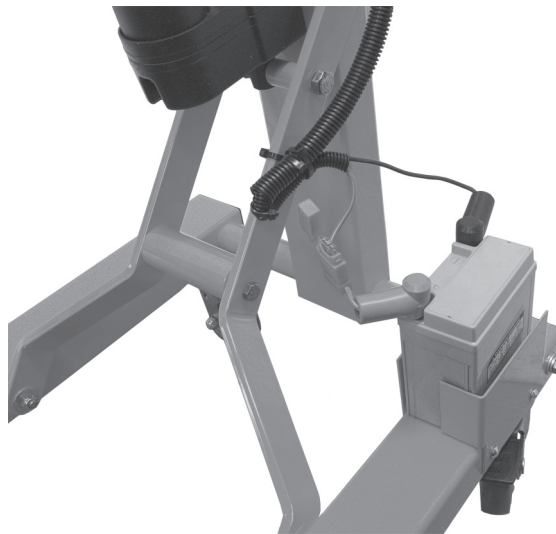
*Numbers in parentheses refer to numbers in parts breakdown (see pages 2 & 3)*

---

## **Battery Installation**

*Note: Battery must be charged 5-8 hours before first use. Do not exceed more than a 24 hour charge.*

1. Place Battery (45) into the Battery Holder (44).
2. Attach red wire to the positive terminal and the black wire to the negative terminal.
3. QR-CL-H is now ready to operate. Please read the rest of the manual before first use.



---

## **Removing the empty cylinder from the vehicle compartment**

1. Remove the oxygen line and apply the safety cap to cylinder. Remove all vehicle straps or brackets holding the horizontal cylinder in place.
2. Press the QR-CL-H switch (41) to raise Rack Assembly (9) high enough to clear Legs (1) when Rack Assembly is rotated.

3. Pull the Lock Handle (19A) and manually rotate Rack Assembly until it locks into the horizontal position.



4. Move QR-CL-H into position next to the vehicle. Raise Rack Assembly to the proper height to align with cylinder compartment. Activate wheel locks.

Important: Activate the wheel locks to prevent unit from moving.

5. Rotate Footplate Handle (11) until Footplate (10) is clear and cylinder can be slid onto Rack Assembly.

NOTE: The valve-end of the cylinder must be facing the handle end of the Rack Assembly.



*Footplate fully opened*



*Valve toward handle end*

6. Slide empty cylinder into Rack Assembly until it clears the Footplate. Release Footplate Handle and confirm cylinder is flush with footplate. Strap cylinder onto the Rack Assembly.
7. Unlock wheels and move unit away from vehicle.
8. Position Rack Assembly high enough that it will not hit legs when rotated to a vertical position. When ready, unlock Rack Assembly with Lock Handle and rotate until it locks in the vertical position.

---

### **Loading a cylinder onto the QR-CL-H**

1. Position Rack Assembly (9) and Footplate (10) at the end of cylinder to be loaded. Angle cylinder enough to slide Footplate underneath.

Important: Activate the wheel locks to prevent unit from moving.

2. Buckle and tighten straps to secure cylinder in place.
3. Raise the cylinder slightly off the ground. Release wheel locks. Carefully move the QR-CL-H with the cylinder to the vehicle.

---

### **Placing a full cylinder in the vehicle**

1. Press the QR-CL-H switch (41) to raise Rack Assembly (9) high enough to clear Legs (1) when Rack Assembly is rotated.
2. Pull the Lock Handle (19A) and manually rotate Rack Assembly until it locks into the horizontal position.
3. Move QR-CL-H into position next to the vehicle. Raise Rack Assembly to the proper height to align with cylinder compartment. Activate wheel locks.

Important: Activate the wheel locks to prevent unit from moving.

4. Loosen strap and unbuckle cylinder.
5. Rotate Footplate Handle (11) until Footplate (10) is clear and cylinder can be slid into compartment.
6. Remove safety cap. Slide full cylinder into compartment and secure. Attach oxygen line.

---

## **Maintenance**

### A. Semi-Annually

1. Visually inspect unit for excess dirt build-up and debris.
2. Lubricate all joints and pivots with CRC Stor & Lube long-term lubricant and rust preventative #03032. Excess lubrication should be wiped off.
3. Electric Actuator - The exposed shaft should be cleaned and sprayed with WD40 or a similar light, moisture-repelling silicon type lubricant.



**Ziamatic Corp.**

10 West College Avenue, P.O. Box 337, Yardley, PA 19067-0587 • (215) 493-3618 • FAX: (215) 493-1401

\*ZICO is a registered trademark for fire, safety and marine products made by Ziamatic Corp.

**www.ziamatic.com**  
**TOLL FREE: 800-711-3473**

**Copyright Ziamatic Corp. 9-15**