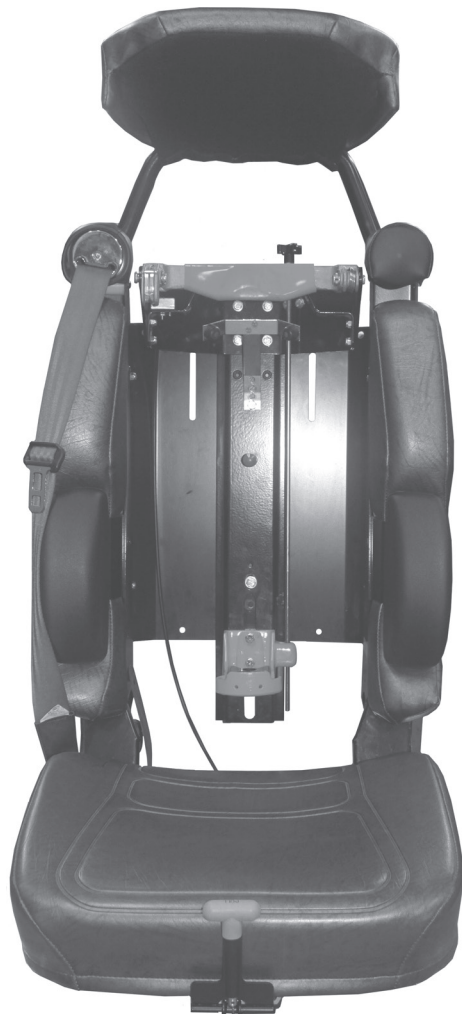


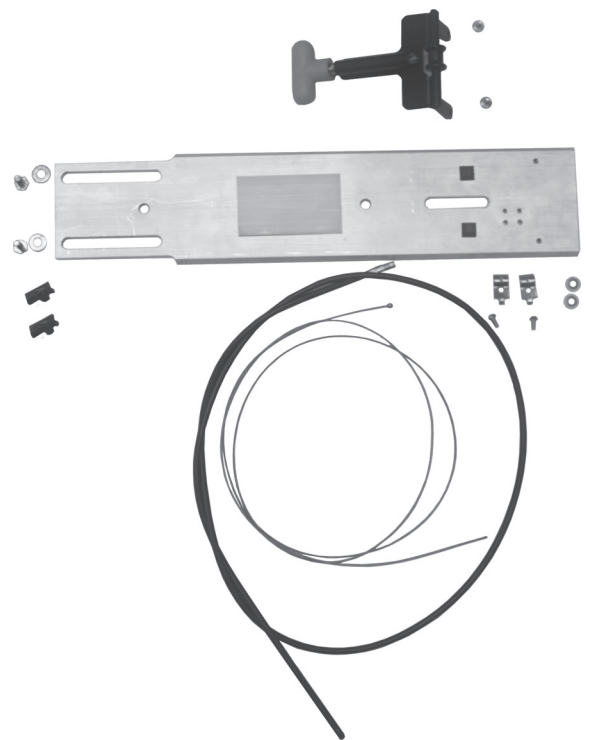
ZICO®**1027PM4**

Rev. 7-6-17

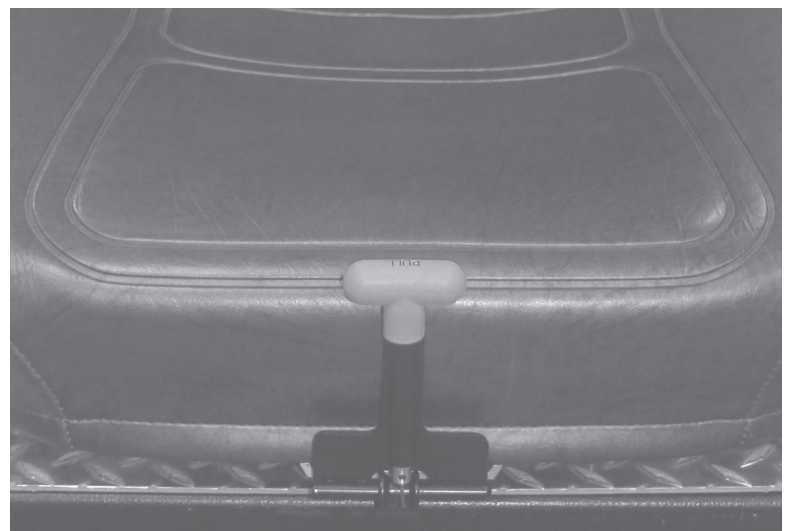
**CENTER PULL RELEASE IN BOSTROM 350/450 TANKER SEAT
FOR THE ROL-LOC® MECHANICAL BRACKET
MODEL QM-ROLO-CPR-TS**

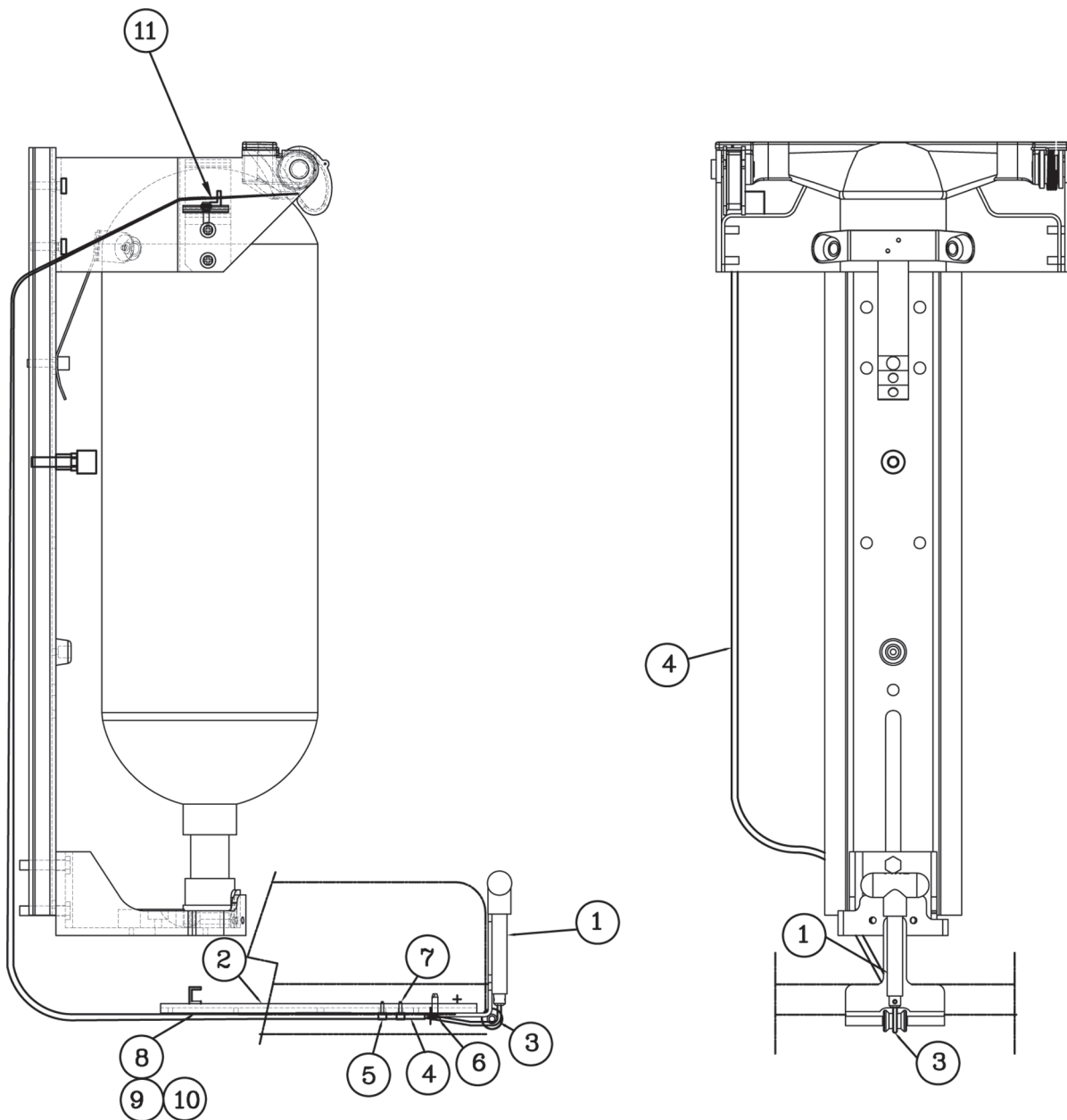


The center pull release kit allows the SCBA bracket to be released by pulling a "T" handle located on the front of the seat. The kit puts the release in an accessible location where it is not in the way of the SCBA pack straps or the seat belt. It includes all of the parts needed to make the conversion.



Model QM-ROLO-CPR-TS is made for the Rol-Loc SCBA bracket in a Bostrom Tanker seat. For additional models or other combinations, please contact us at 1-800-711-FIRE.





ITEM NO.	PART NO.	DESCRIPTION	QTY.
1	1010-065-905	Center Pull Release Assembly	1
2	1027-144-995	Cable Plate Assembly	1
3	1027-144-101	Pull Release Cable Assembly 66.5"	1
4	1027-140-103	57" Conduction w/Crimped Fitting	1
5	1027-144-105	Conduit Clamp	2
6	3025-172006	10-32 x 3/8" Thread Forming Screw	2
7	9010-221606	8-32 x 3/8" Ph Phil	2
8	9010-102512	1/4-20 x 3/4" Hex Screw	2
9	9014-112500	1/4-20 Flat Washer	2
10	9012-362500	1/4-20 U Nut	2
11	1027-105-137	Push Nut (for 6MM Rod)	2

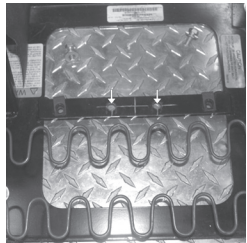
Center Pull Release Installation Instructions for 450 Tanker Seat

Before installing the Center Pull Release kit, make sure that the Rol-Loc is fully adjusted for the SCBA being used.

1. Remove the (2) bolts holding the rear of the seat cushion down to the cross brace then flip the cushion up.



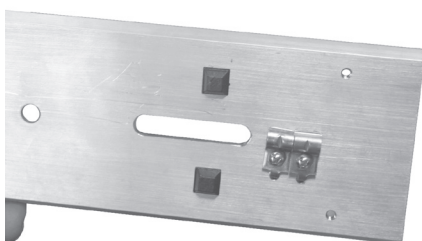
2. Lay out and drill (2) 25/64" holes from the center of the brace, spaced 2-1/4" apart.



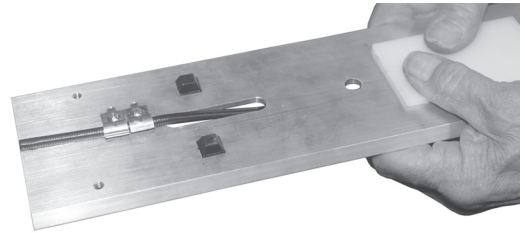
3. Insert the (2) U nuts (Item 10) into the holes, threads down.



4. Mount the conduit clamps (Item 5) to the flat side of the cable plate (Item 2) with the 8-32 x 3/8" screws (Item 7). **Do not tighten.**



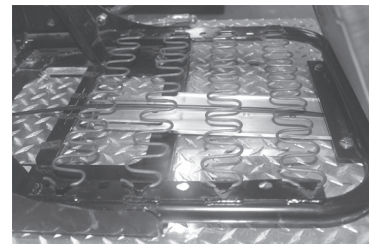
5. From the channel side of the cable plate, pass the non-crimped end of the conduit through the center slot and under the clamps. Push the conduit even with the end of the cable plate and tighten the clamps.



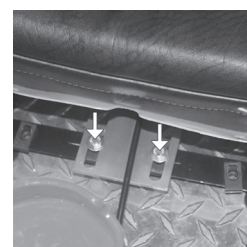
6. Mount the center pull release assembly (Item 1) to the channel side of the cable plate with (2) 10-32 x 3/8" screws.



7. Install the conduit and cable plate under the front of the seat frame and springs keeping it above the mounting frame and the cross brace.

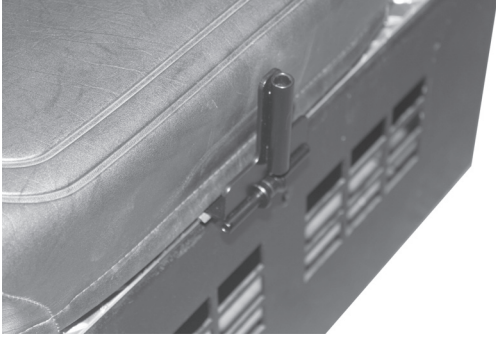


8. Allow the seat cushion to rest back down far enough to start 1/4-20 x 3/4" hex screws (Item 8) with 1/4" flat washers (Item 9) through the slots in the cable plate into the U nuts. (Only tighten it 2 turns.)



Center Pull Release Installation Instructions for the 450 Continued

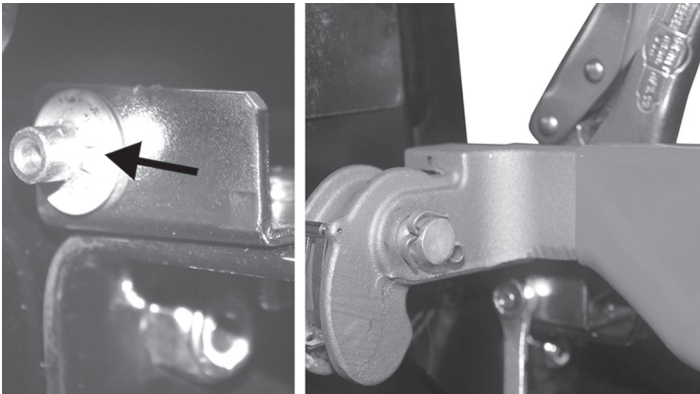
9. Let the seat cushion go all the way down and push the release assembly into the chosen location. Once in place, tighten the (2) screws holding the cable plate in place.



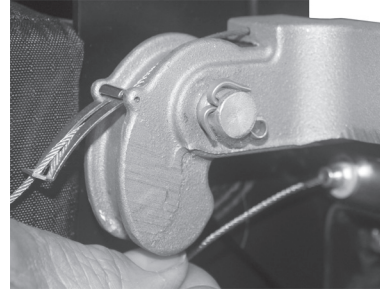
10. Route the conduit up to and through the access hole on the Rol-Loc's upper bracket to engage the pull release bracket attached to the top strap.



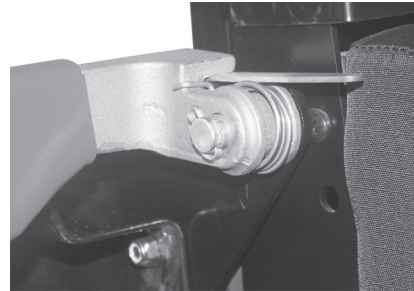
11. Hold crimped conduit end into the bracket from behind and push spring retaining nut onto the conduit end. A set of vise grips and a box wrench are suggested.



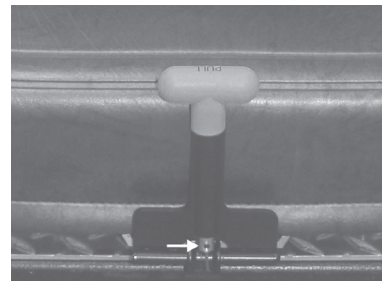
22. Feed the cable from the back of the Rol-Loc casting and through the cable guide as shown in the picture below. Feed the cable through the conduit until it is visible from below the release handle.



13. Insert an approximate 1/16" shim under the top clamp to alleviate tension on the cable.



14. Feed the cable under the roller and toward the bottom of the "T" handle and insert the cable into the bottom of the "T" handle shaft. Make sure the "T" handle is in the down position, then tighten the (2) 5/64" hex set screws. (There is one in front and one on the back. The handle will need to be rotated 180° to reach the second screw.)

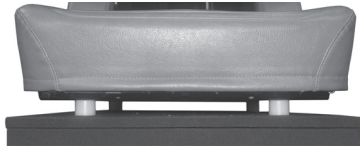


15. The center pull release should now be installed properly. Remove the shim and tighten and replace the seat cushion bolts. Make sure the Rol-Loc releases properly without the "T" handle coming out of the bracket. If it is not functioning properly, go back to step 14 and repeat.

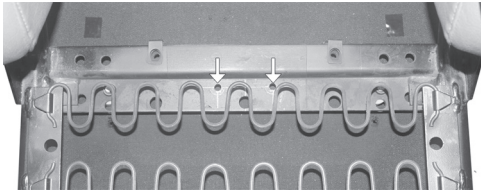
Center Pull Release Installation Instructions for the 350 Tanker

Before installing the Center Pull Release kit, make sure that the Rol-Loc is fully adjusted for the SCBA being used.

1. If the seat is bolted directly to a flat mounting surface, you will have to elevate it to a minimum of 7/8".



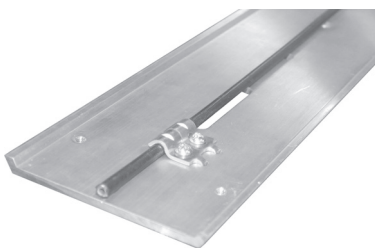
2. Remove the (2) bolts holding the rear of the seat cushion down to the cross brace, then flip the cushion up.
3. Lay out and drill (2) 9/32" holes 1" back and 2-1/4" apart on the center of the rear seat mount.



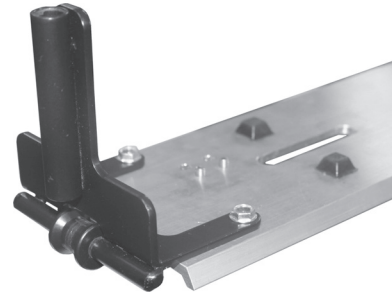
4. Mount the conduit clamps (Item 5) to the channel side of the cable plate (Item 2) with the 8-32 x 3/8" screws (Item 7). At this time, only hand tighten two full turns.



5. While keeping the conduit on the channel side of the cable plate, pass the non-crimped end under the clamps pushing it even with the end of the plate and tighten the clamps.



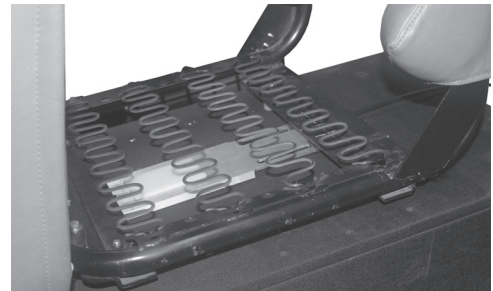
6. Mount the center pull release assembly (Item 1) to the flat side of the cable plate with (2) 10-32 x 3/8" screws.



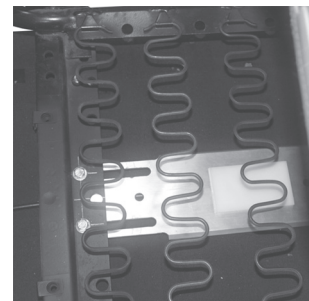
7. From the outside edge placed at the far end of the elongated slots, install the (2) 1/4-20 U nuts onto the cable plate with threads facing the channel side. *(Tapping them on lightly with a hammer makes the process easier.)*



8. Lift the cushion and slide the conduit and cable under the seat and springs.

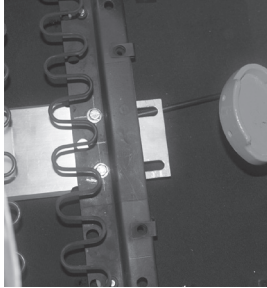


9. Allow the seat cushion to rest back down far enough to start 1/4" x 3/4" hex screws with flat washers through the (2) 9/32" holes in the rear seat mount into the U nuts. **Do not tighten.**



Center Pull Release Installation Instructions for the 350 Continued

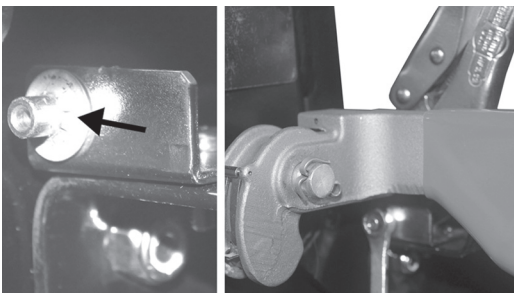
10. Let the seat cushion go all the way down and push the release assembly into the chosen location. Once in place, tighten the (2) screws holding the cable plate in place.



11. Route the conduit up to and through the access hole on the Rol-Loc's upper bracket to engage the pull release bracket attached to the top strap.

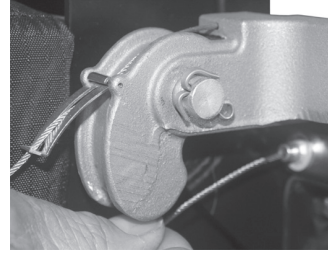


12. Hold crimped conduit end into the bracket from behind and push spring retaining nut onto the conduit end. A set of vise grips and a box wrench are suggested.

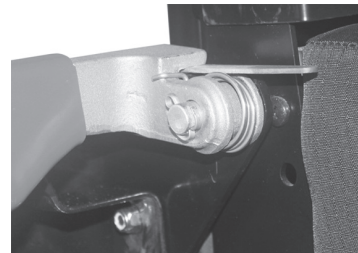


13. Feed the cable from the back of the Rol-Loc casting and through the cable guide as shown in the next picture. Feed the cable through the

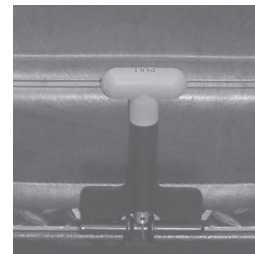
conduit until it is visible from below the release handle.



14. Insert an approximate 1/16" shim under the top clamp to alleviate tension on the cable.



15. Feed the cable under the roller and toward the bottom of the "T" handle and insert the cable into the bottom of the "T" handle shaft. Make sure the "T" handle is in the down position, then tighten the (2) 5/64" hex set screws. (There is one in front and one on the back. The handle will need to be rotated 180° to reach the second screw.)



16. The center pull release should now be installed properly. Remove the shim and tighten and replace the seat cushion bolts. Make sure the Rol-Loc releases properly with the "T" handle coming out of the bracket. If it is not functioning properly, go back to step 14 and repeat.



Ziamatic Corp.

10 West College Avenue, P.O. Box 337, Yardley, PA 19067-0587 • (215) 493-3618 • FAX: (215) 493-1401

*ZICO is a registered trademark for fire, safety and marine products made by Ziamatic Corp.

www.ziamatic.com

TOLL FREE: 800-711-3473

Copyright Ziamatic Corp. 7-17