

QUIC-ACCESS® RESPIRATORY AND EMERGENCY SELF-CONTAINED BREATHING APPARATUS CABINETS

MOLDED CABINETS

Constructed of UV stabilized ABS materials with highly visible safety yellow doors. Bulb seal gasket locks out moisture and dirt, while thermoplastic hinges and latches are highly resistant to corrosive chemicals and ultraviolet exposure. Without opening the door, sight windows allow external visual inspection of contents and air cylinder pressure readings. Handle is molded into the door. Label silk-screened on door to show contents. Safety yellow doors are highly visible and swing wide open for easy retrieval of contents. One shelf may be mounted in the center of the cabinet when cabinet is not used to store respirators or ESCBA.



MODEL ESCBA-1

Emergency self-contained breathing apparatus cabinet for storing one unit. A quick-release strap assembly holds the ESCBA ready for immediate use.

Hole may be drilled through the outside edge of the door and cabinet and a plastic tie strap may be threaded through and sealed...a broken seal indicates entry into the cabinet.



ORDER NO.	DESCRIPTION	OUTSIDE DIMENSIONS W x H x D	INSIDE DIMENSIONS W x H x D	WT./@ IN LBS.
ESCBA-1	Single Cabinet/Support	13-1/2" x 24" x 10-1/4"	7-3/8" x 20-3/4" x 8-3/4"	†10.0
ESCBA-SS	Support Strap Only/Hardware	Not Applicable	Not Applicable	.3
ESCBA-1-SH	Shelf for ESCBA-1 Cabinet	8-3/4" x 3/16" x 8"	Not Applicable	.5
ESCBA-1-LSS	ESCBA-1 Cabinet Less Support	Not Applicable	Not Applicable	† 9.7

MODEL ESCBA-2

Emergency self-contained breathing apparatus cabinet for storing two units.

ORDER NO.	DESCRIPTION	OUTSIDE DIMENSIONS W x H x D	INSIDE DIMENSIONS W x H x D	WT./@ IN LBS.
ESCBA-2	Double Cabinet/Support	19" x 24-1/4" x 10-1/4"	13-1/2" x 20-3/4" x 8-3/4"	†13.9
ESCBA-2-SH	Shelf for ESCBA-2 Cabinet	14-1/2" x 3/16" x 8"	Not Applicable	.8
ESCBA-2-LSS	ESCBA-2 Cabinet Less Supports	Not Applicable	Not Applicable	†13.3

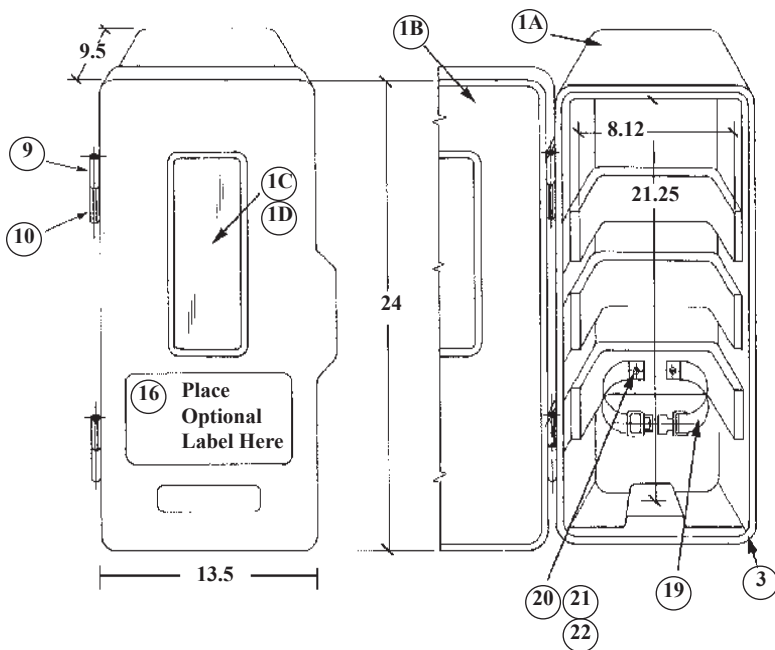


MODEL ERCY

Emergency respirator cabinet is large enough to accommodate nearly any brand of respiratory equipment.

ORDER NO.	DESCRIPTION	OUTSIDE DIMENSIONS W x H x D	INSIDE DIMENSIONS W x H x D	WT./@ IN LBS.
ERCY	Emergency Respirator Cabinet	16-3/8" x 31-5/8" x 11-1/4"	11-1/2" x 26-1/2" x 9-1/2"	†18.0
ERCY-S	Shelf for ERCY or FECR	13" x 3/16" x 9-1/2"	Not Applicable	1.0

ITEM NO.	DESCRIPTION	MODEL ERCY	MODEL ESCBA-1	MODEL ESCBA-2	PCS. REQ.
1	Cabinet, door & windows	5005-125-105	5005-150-105	5005-160-105	1
1A	Cabinet, molded ABS	5005-125-109	5005-150-101	5005-160-101	1
1B	Door, molded ABS	5005-125-110	5005-150-102	5005-160-102	1
1C	Window, clear polycarbonate	5005-110-107	5005-110-107	5005-110-107	1-2-2
1D	3M adhesive for window	5005-000-120	5005-000-120	5005-000-120	1 tube
2	Latch, ABS	5005-000-130	5005-000-130	5005-000-130	2
3	Gasket, bulb seal	5005-000-135	5005-000-127	5005-000-128	1
4	1/4-20 x 7/16 pan hd m/s	9110-212507	9110-212507	9110-212507	8
5	1/4 ID flat washer	9114-112500	9114-112500	9114-112500	8
6	3/16 pop rivet, .188/.250	9260-001802	9260-001802	9260-001802	4
7	3/16 pop rivet, .375/.500	9260-001806	9260-001806	9260-001806	6
8	.191 ID flat washer	9114-101800	9114-101800	9114-101800	10
9	Hinge attached to door	5005-000-115	5005-000-115	5005-000-115	2
10	Hinge attached to cabinet	5005-000-116	5005-000-116	5005-000-116	2
11	1/4 x 3-1/4 drive pin	9045-112552	9045-112552	9045-112552	2
14	Label, "5-7-10-15" min.	5005-000-151			1
19	Web strap with 1" buckle		1040-300-110	1040-300-110	1-2
20	10-32 x 5/8 truss hd m/s		9110-252010	9110-252010	2-4
21	10-32 hex hd nut		9112-101900	9112-101900	2-4
22	# 10 flat washer		9114-111900	9114-111900	2-4
15	Optional shelf	ERCY-S	ESCBA-1-SH	ESCBA-2-SH	
16	Opt. Label "Emergency Respirator"	5005-000-160	5005-000-160	5005-000-160	
	Opt. Label "Emergency Equipment"	5005-000-165	5005-000-165	5005-000-165	
	Opt. Label "Protective Clothing"	5005-000-170	5005-000-170	5005-000-170	

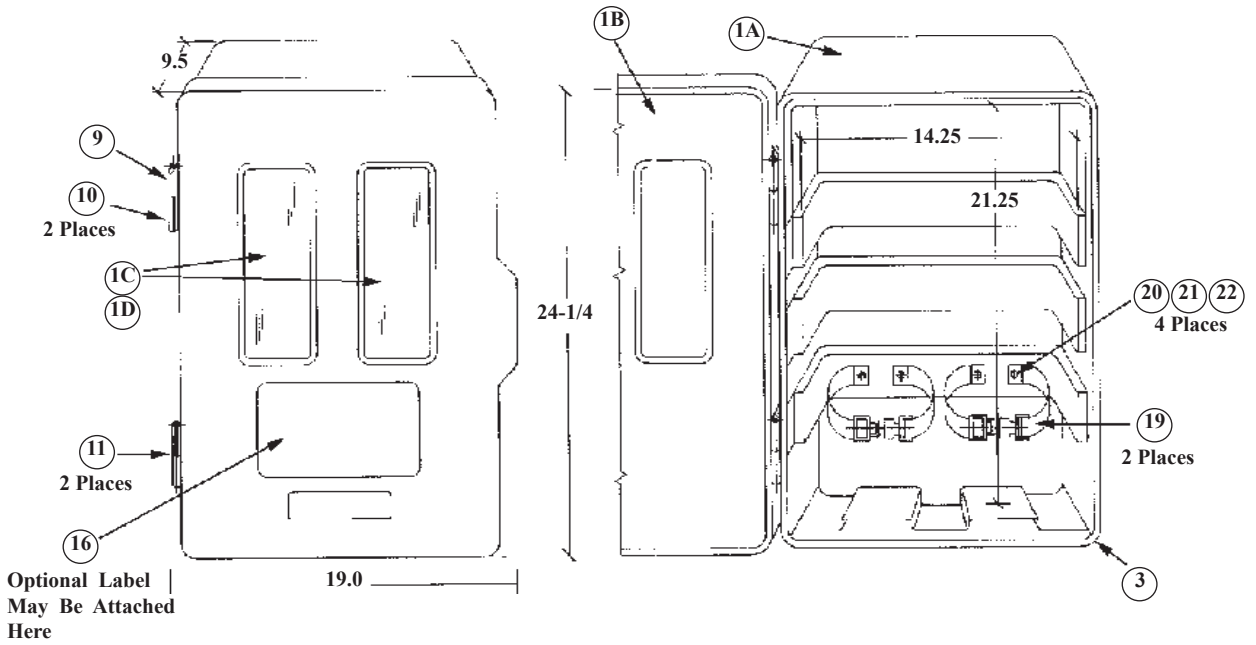


MODEL ESCBA-1

Please read instructions carefully before mounting your new cabinet.

- Place the cabinet on a work bench and place the respirator onto the bottom shelf of the cabinet. More than one unit may be mounted in the cabinet.
- Place the strap (19) around the respirator, with the buckle in the front.

- The strap should be mounted so the hardware is attached through one of the cabinet's raised ribs.
- Mark the holes for mounting the straps and drill holes with 3/16" drill.
- Attach straps using hardware provided (20, 21 & 22). Head of the screw should be on the inside of the cabinet. Place respirator in cabinet and attach strap.
- Remove respirator and place cabinet against the surface upon which it is to be mounted.
- Bottom of cabinet should be approximately 36" above the floor level.
- Drill four 5/16" holes through the cabinet, one in each corner, and into the mounting surface. If sheet metal or wood screws are to be used for mounting, use a 1/4" drill.
- Fasten cabinet to mounting surface (hardware not provided). Use large washers between the bolt and the cabinet.
- Place the respirator into the cabinet and attach strap.

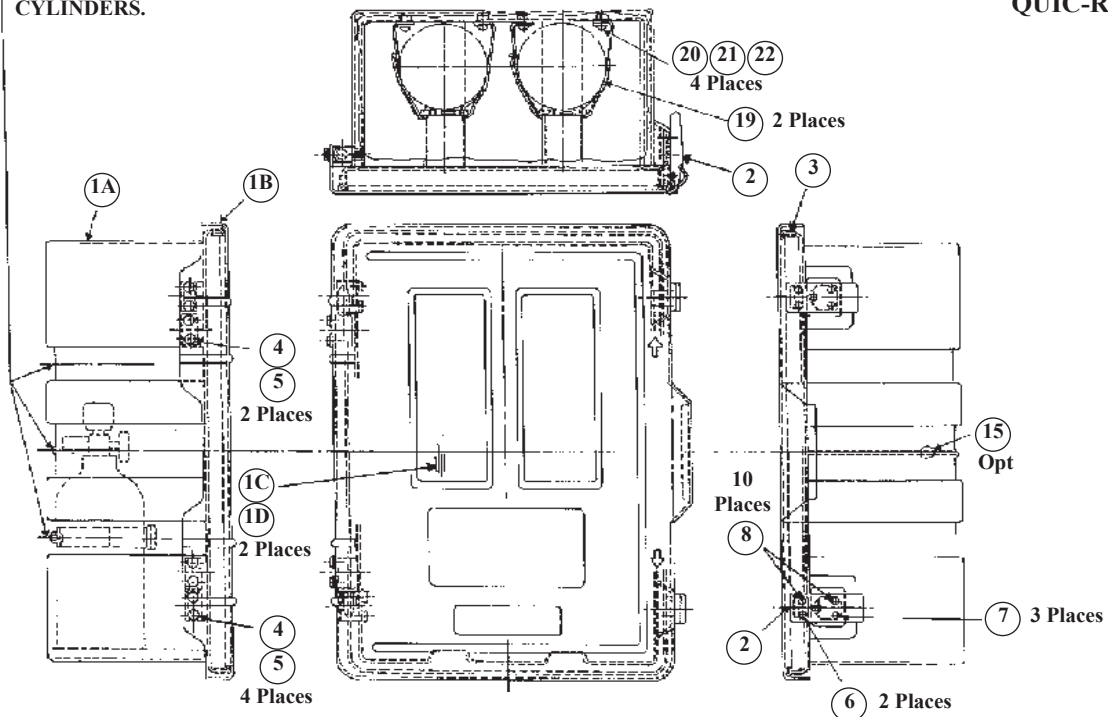


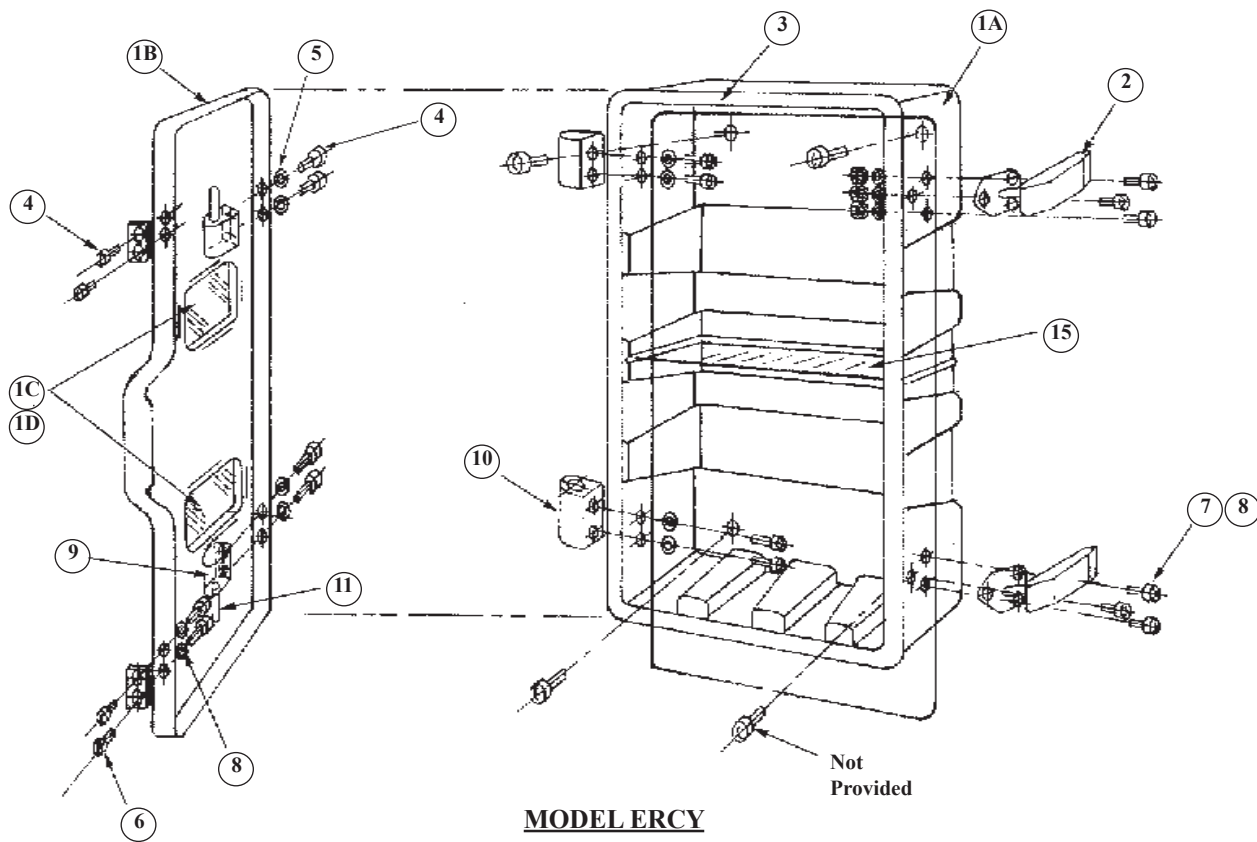
MODEL ESCBA-2



**ESCBA units held in place with
QUIC-RELEASE® straps.**

NOTE:
EMERGENCY RESPIRATOR MAY BE
ATTACHED AT ANY OF THE 3
SUPPORT LOCATIONS INDICATED.
SHELF (15) MAY BE PLACED AT
TOP AND BOTTOM ARROWS WHEN
CABINET NOT USED WITH ESCBA
CYLINDERS.





Ziamatic Corp.

10 West College Avenue, P.O. Box 337, Yardley, PA 19067-8337 • (215) 493-3618 • FAX: (215) 493-1401

*ZICO is a registered trademark for fire, safety and marine products made by Ziamatic Corp.

www.ziamatic.com

CALL TOLL FREE: 800-711-FIRE

Copyright Ziamatic Corp. 6-01