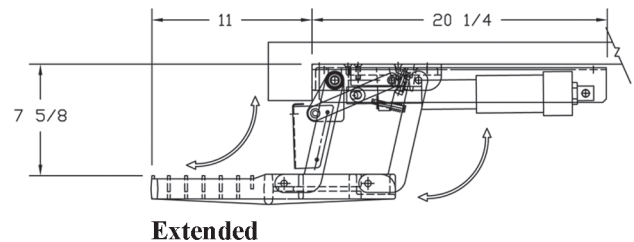
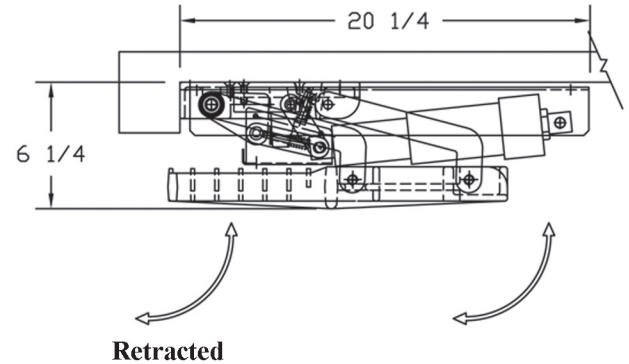
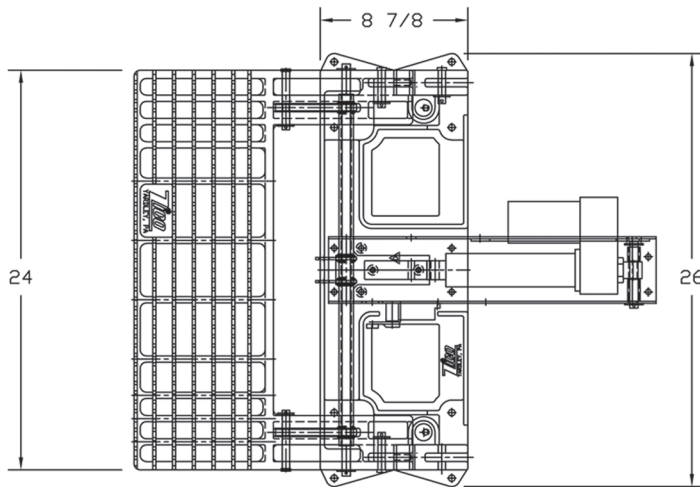
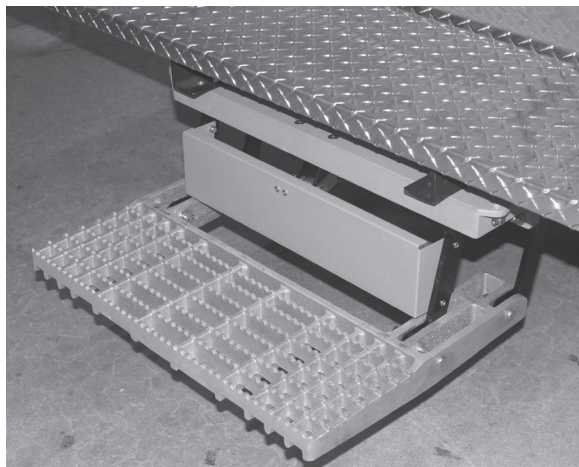


**QUIC-STEP™ RETRACTABLE VEHICLE STEP**  
**MODEL VS-24-9**  
**PARTS AND INSTRUCTION MANUAL**



Designed specifically for use on fire and emergency vehicles. May be retrofitted onto existing apparatus.

Cast aluminum step plate 24" wide x 8-3/8" deep with a non-skid surface to provide traction and safety.



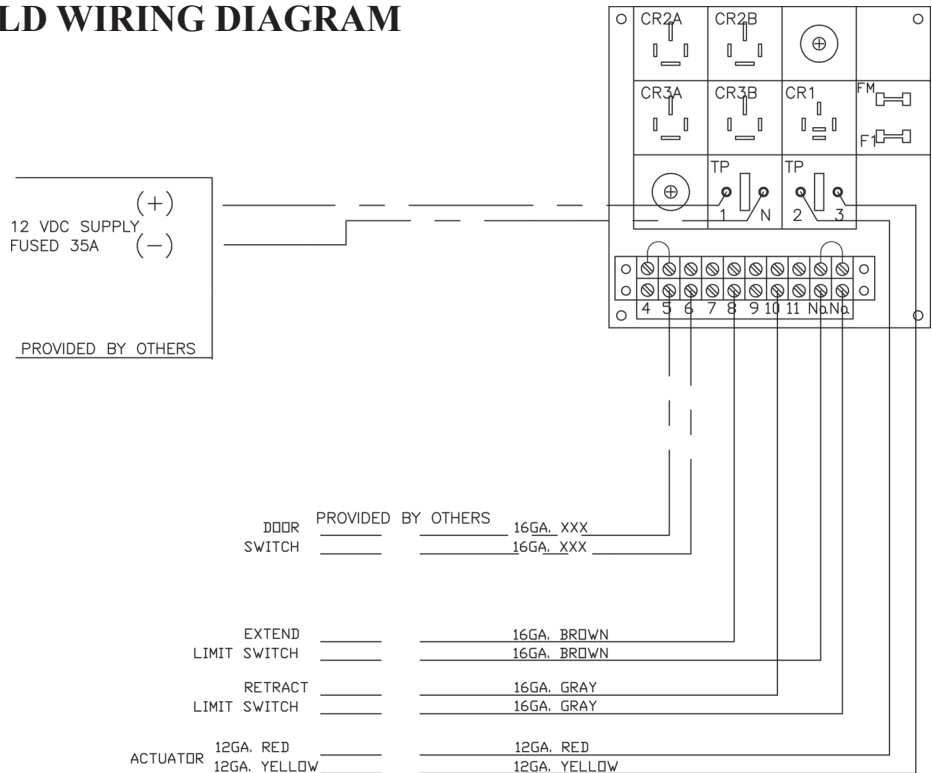
Powered by a single 12-volt electric actuator. Includes a patent pending in-line locking mechanism to hold the extended step rigidly in place.

Step may be wired into door interlock system to automatically extend with door opening and retract with door closing.

Meets NFPA 1901-09 requirements for slip resistance and static load.

MODEL	DESCRIPTION	WT./@ IN LBS.
VS-24-9	Retractable Vehicle Step	64.0

**FIGURE 1 - FIELD WIRING DIAGRAM**



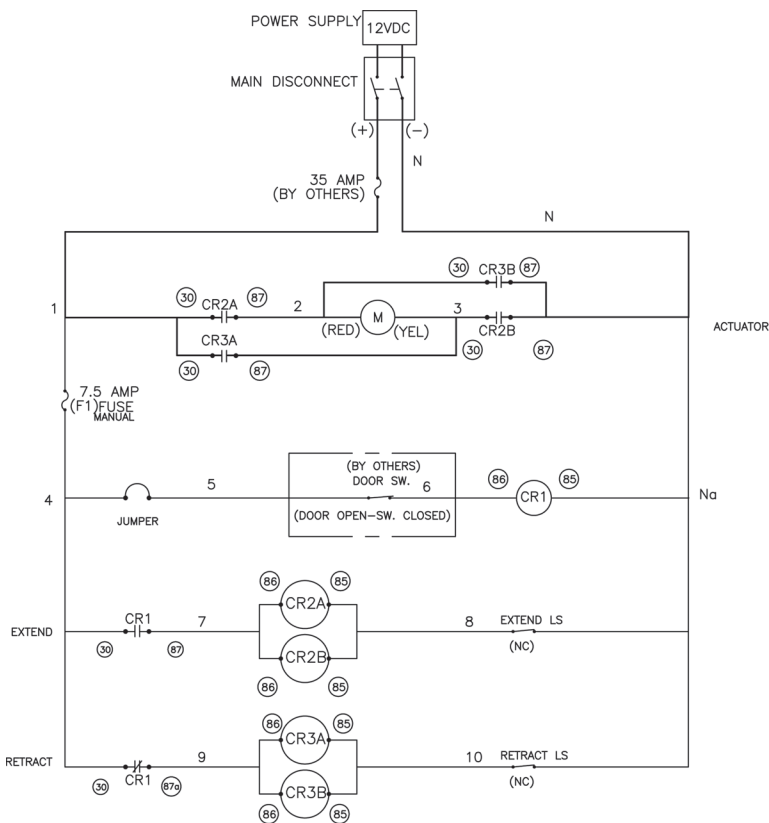
**WARNING**

**ELECTRICAL SHOCK  
OR  
CRUSHING INJURY**

**DISCONNECT FROM POWER  
BEFORE SERVICING**

**Failure to do so could result  
in serious injury or death**

**FIGURE 2 - ELECTRICAL SCHEMATIC**



**MODE OF OPERATION**

- PROVIDE POWER TO AUTOSTEP

**EXTEND MODE:**

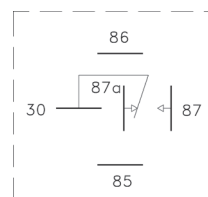
- STEP WILL AUTOMATICALLY EXTEND AS SOON AS THE DOOR IS OPENED.
- STEP WILL REMAIN EXTENDED AS LONG AS DOOR REMAINS OPEN.

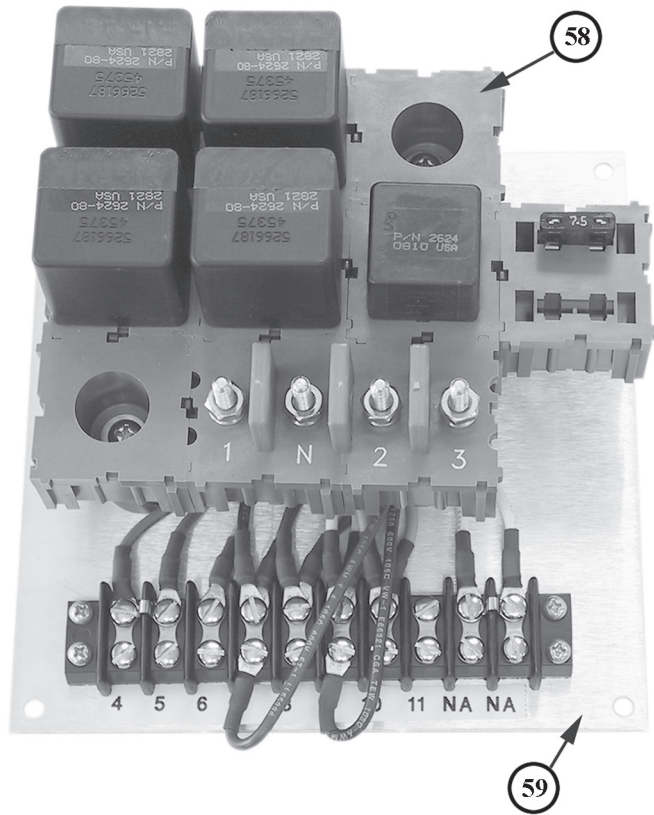
**RETRACTED MODE:**

- STEP WILL AUTOMATICALLY RETRACT AS SOON AS THE DOOR IS CLOSED.
- STEP WILL REMAIN RETRACTED AS LONG AS DOOR REMAINS CLOSED.

**NOTE:**

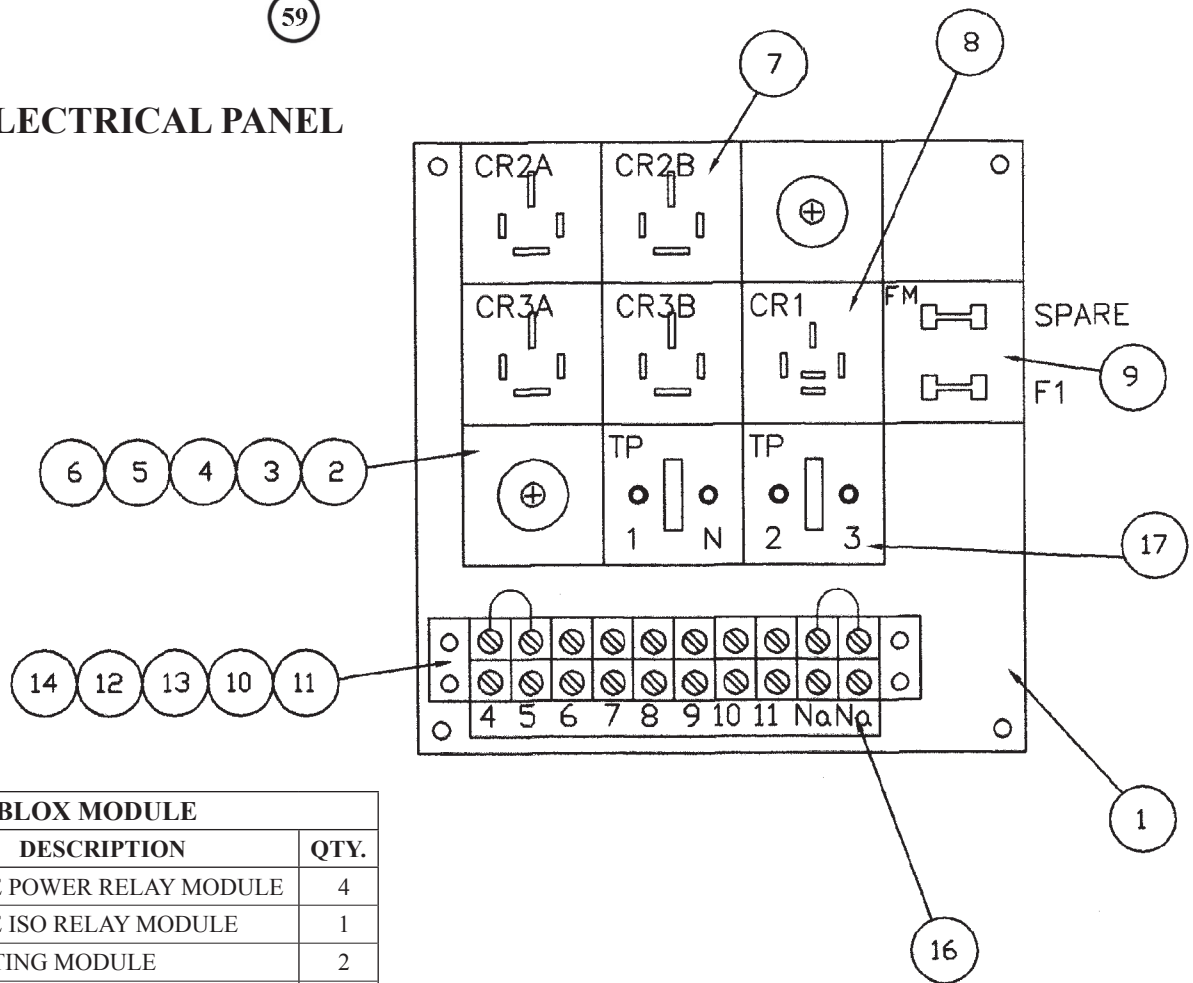
CIRCLED NUMBERS ARE NUMBERS MARKED ON DEVICE  
NON-CIRCLED NUMBERS ARE TERMINAL NUMBERS  
COLOR IN BRACKETS - DEVICE WIRE COLORS  
COLOR WITHOUT BRACKETS - WIRE LEAD COLOR





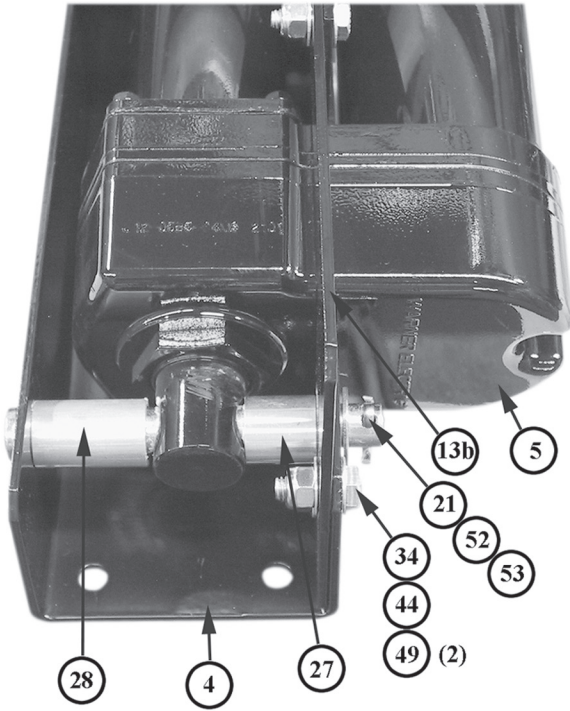
ELECTRICAL PANEL ASSEMBLY			
ITEM	PART NO.	DESCRIPTION	QTY.
1	3094-005-150	SUB-PANEL, 6-1/2 X 6-1/2	1
2	3095-005-152	DIL BLOX MODULE	1
3	3094-005-154	STANDOFF #74096	2
4	9010-222024	SCREW, 10-32 X 1-1/2 PH PHIL.	2
5	9014-202000	LOCKWASHER #10	10
6	9010-102000	HEX NUT, 10-32	10
7	3097-500-151	POWER RELAY CR2A, CR2B, CR3A, CR3B	4
8	3094-005-156	CONTROL RELAY CR1	1
9	3094-005-158	FUSE 7.5A	1
10	9014-201300	LOCKWASHER #6	4
11	9010-101300	HEX NUT, 6-32	4
12	3094-005-160	TERM. BLOCK, 10 POS. CINCH 141 SERIES	1
13	9010-241310	SCREW, 6-32 X 5/8 RD. HD., PHIL.	4
14	3094-005-162	TERM. JUMPER CINCH TYP 141J	1
15	3094-005-164	WIRING SET	1
16	3094-005-166	TERMINAL LABEL	1
17	3094-005-168	TERMINAL MARKING	1

FIGURE 3 - ELECTRICAL PANEL

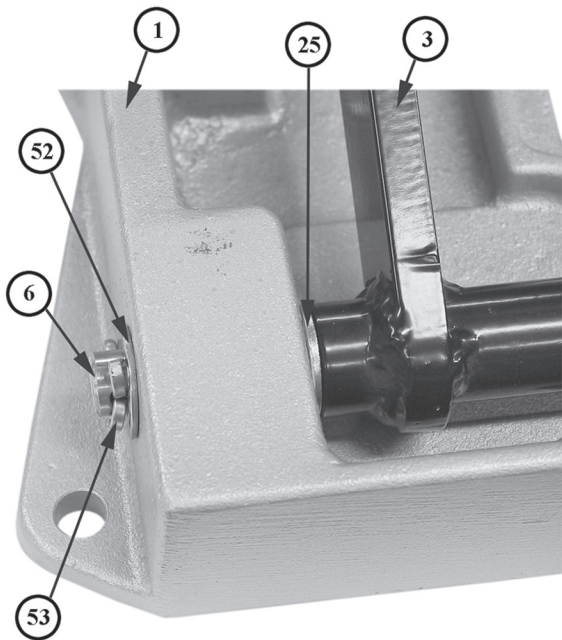


DIL BLOX MODULE		
PART NO.	DESCRIPTION	QTY.
	SINGLE POWER RELAY MODULE	4
	SINGLE ISO RELAY MODULE	1
	MOUNTING MODULE	2
	STUD MODULE ASSY.	2
	2 POS CB/FUSE MODULE	1
	LOCKING WEDGE	13

## CHART 1



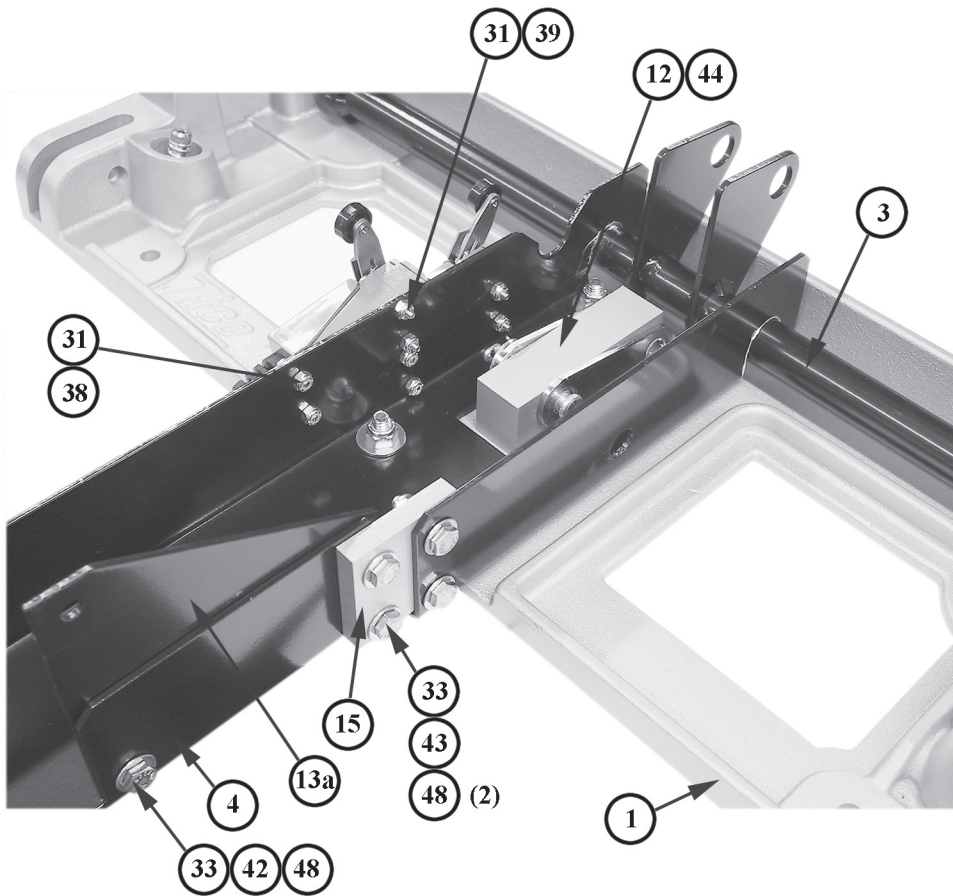
**FIGURE 4 - ACTUATOR**



**FIGURE 5 - TORQUE TUBE**

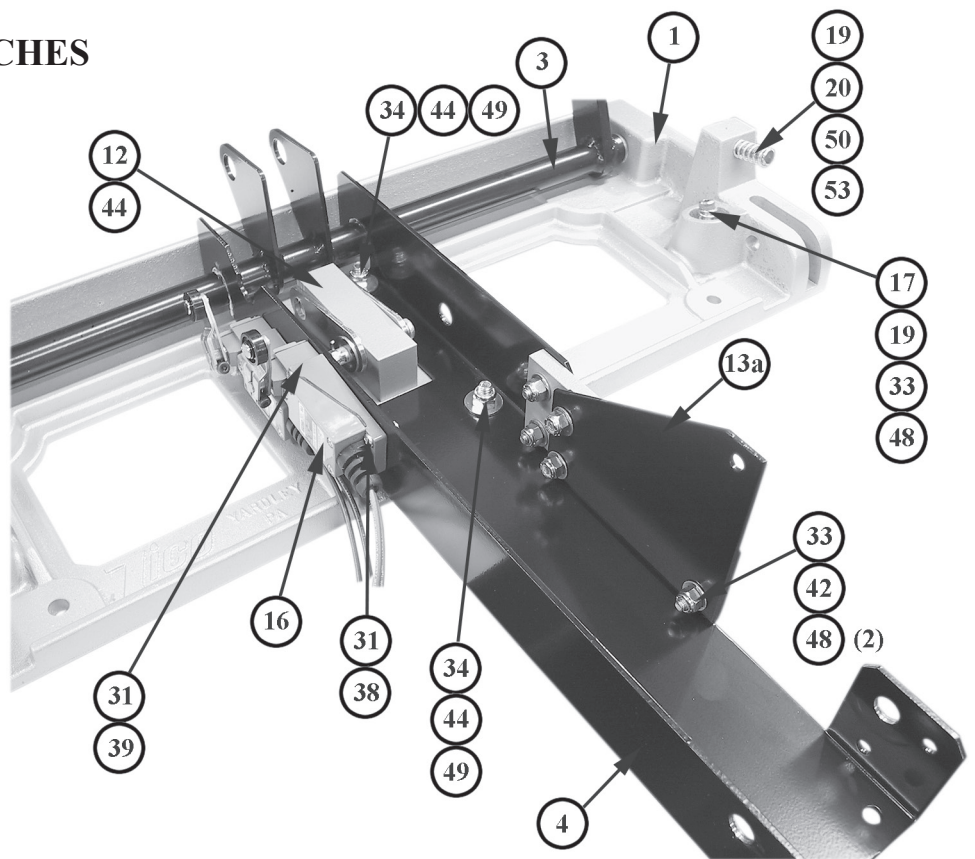
ITEM	PART NO.	DESCRIPTION	QTY.
1	3094-005-101	BASE CASTING	1
2	3094-030-103	STEP CASTING	1
3	3094-030-105	TORQUE TUBE WELDMENT	1
4	3094-005-133	ACTUATOR ATTACH. BRACKET	1
5	3094-005-113	LINEAR ACTUATOR	1
6	3094-005-115	SHAFT, 1/2ø x 24"	1
7	3094-030-117	SLAVE ARM	2
8	3094-005-119	SHORT LINK	2
9	3094-005-121	LONG LINK	2
10	3094-030-123	KICK PANEL	1
11	3094-005-125	KICK PANEL BRACKET	1
12	3094-005-135	MOUNTING BLOCK, LINKAGE	1
13a	3094-005-137	STIFFENING PLATE A	1
13b	3094-005-138	STIFFENING PLATE B	1
14	3094-005-141	SWITCH EXTENSION	1
15	3094-005-143	SPACER PLATE	1
16	3097-500-181	LIMIT SWITCH	2
17	9110-313116	SHOULDER SCREW, 5/16-18 x 1 S/S	2
18	9010-315032	SHOULDER SCREW, 1/2 - 13 x 2/3/8-16TH.	1
19	3094-005-180	SPRING BUMPER	4
20	9080-003136	CLEVIS PIN, 5/16 x 2-1/4	2
21	9080-005064	CLEVIS PIN, 1/2ø x 4	1
22	9080-003730	CLEVIS PIN, 3/8 x 1-7/8	1
24	9080-004332	CLEVIS PIN, 7/16 x 2	4
25	3094-005-182	BUSHING SHAFT, .500 ID x 5/8 OD, .1 FL, BRONZE	2
26	3094-005-184	SLEEVE, 3/8 ID x 5/8 OD x 1.625 LG., SS	1
27	3094-005-186	SPACER, .75 OD, .781 LG. x .083 WALL, ALUM. TBG.	1
28	3094-005-188	SPACER, .75 OD x 1.25 LG. x .083 WALL, ALUM. TBG.	1
30	9080-004356	CLEVIS PIN, 7/16 x 3-1/2	2
31	9113-171300	HEX NUT, #6-32, ESNA LOCKNUT S/S	8
32	9113-171900	HEX NUT, 10-24, ESNA LOCKNUT S/S	8
33	9113-172500	HEX NUT, 1/4-20, ESNA LOCKNUT S/S	10
34	9113-133100	HEX NUT, 5/16-18, ESNA LOCKNUT S/S	6
35	9018-173700	HEX NUT, 3/8-16, ESNA LOCKNUT GRD. 8	1
36	9112-203700	HEX NUT, 3/8-16, JAM S/S	1
38	9110-221310	SCREW, #6-32 x 5/8 PAN HD. PHIL.	4
39	9110-221318	SCREW, #6-32 x 1-1/8, PAN HD. PHIL. S/S	4
41	9110-221912	SCREW, #10-24 x 3/4, PHIL. HD. S/S	8
42	9110-102512	SCREW, 1/4-20 x 3/4, HEX HD. S/S	4
43	9110-102516	SCREW, 1/4-20 x 1, HEX HD. S/S	4
44	9018-363116	SCREW, 5/16-18 x 1, FLAT HD. SOCKET GR. 8	8
45	9018-103740	SCREW, 3/8-16 x 2-1/2, HEX HD. GR. 8	1
47	9114-101900	WASHER #10 NOM S/S	8
48	9114-112500	WASHER, 1/4ø NOM. S/S	16
49	9114-113100	WASHER, 5/16ø NOM. S/S	6
50	9014-113700	WASHER, 3/8ø NOM.	4
51	9014-114300	WASHER, 7/16ø NOM	6
52	9114-105000	WASHER, 1/2ø NOM. S/S	3
53	9170-001212	COTTER PIN, 1/8 x 3/4 S/S	11
54	9110-363112	SCREW, 5/16-18 x 3/4, FLAT HD. SOCKET S/S	2
55	9014-133700	WASHER, 3/8ø NOM. GR.8	1
58	3094-005-148	ELECTRICAL PANEL ASSY.	1
59	3094-005-150	SUB PANEL	1
60	0000-000-112	SERIAL NUMBER LABEL	1
61	9120-101103	DRIVE SCREW #4 x 3/16 TYPE U	2
62	3094-005-190	WARNING LABEL, ELECTRICAL SHOCK	1

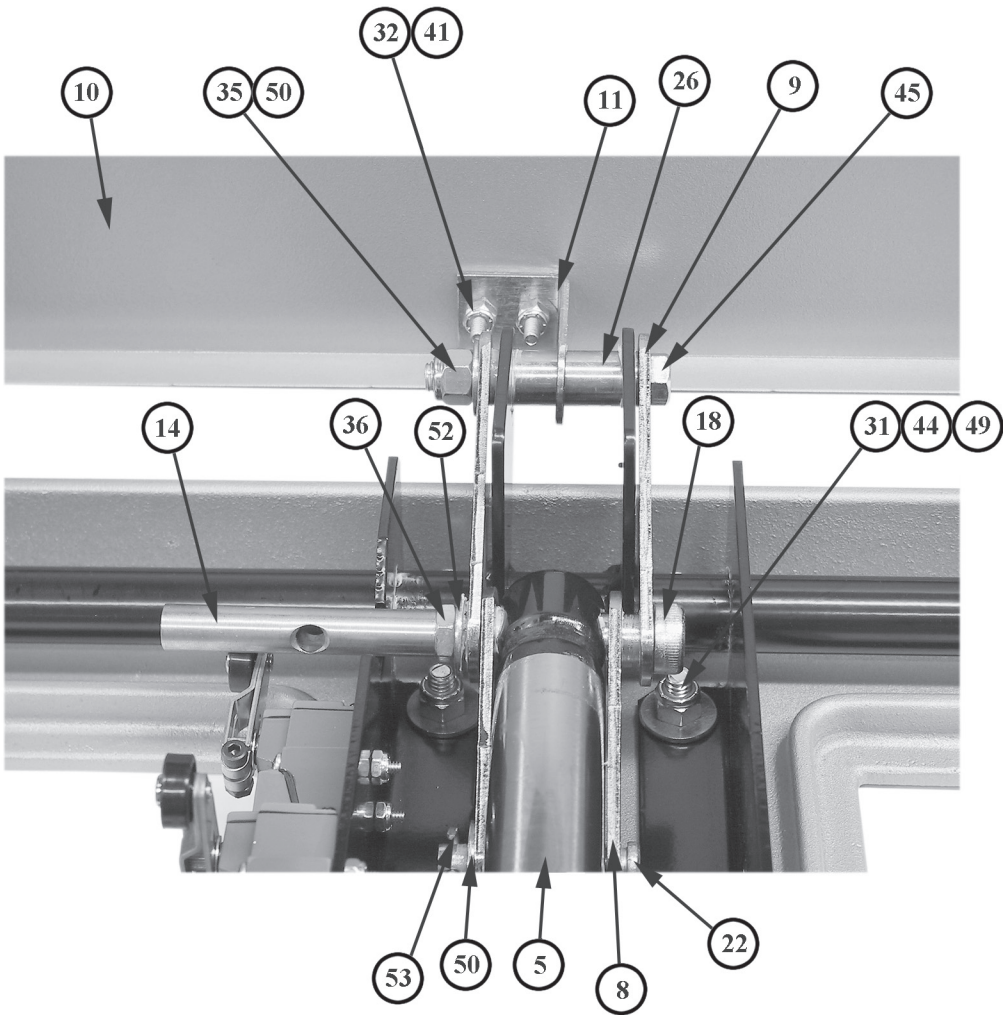




**FIGURE 6 -  
ACTUATOR RETAINER  
BRACKET**

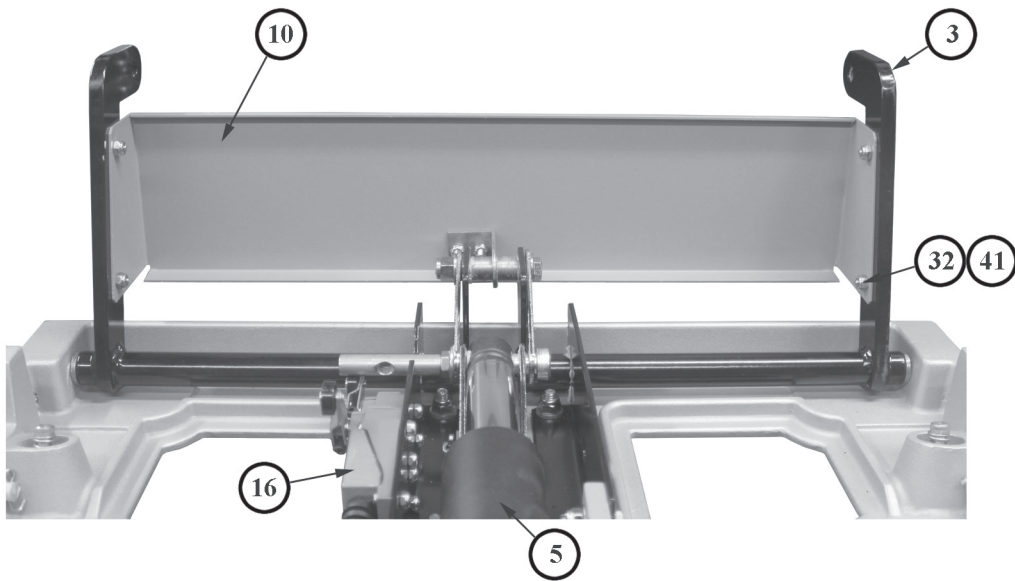
**FIGURE 7 - MICRO SWITCHES**

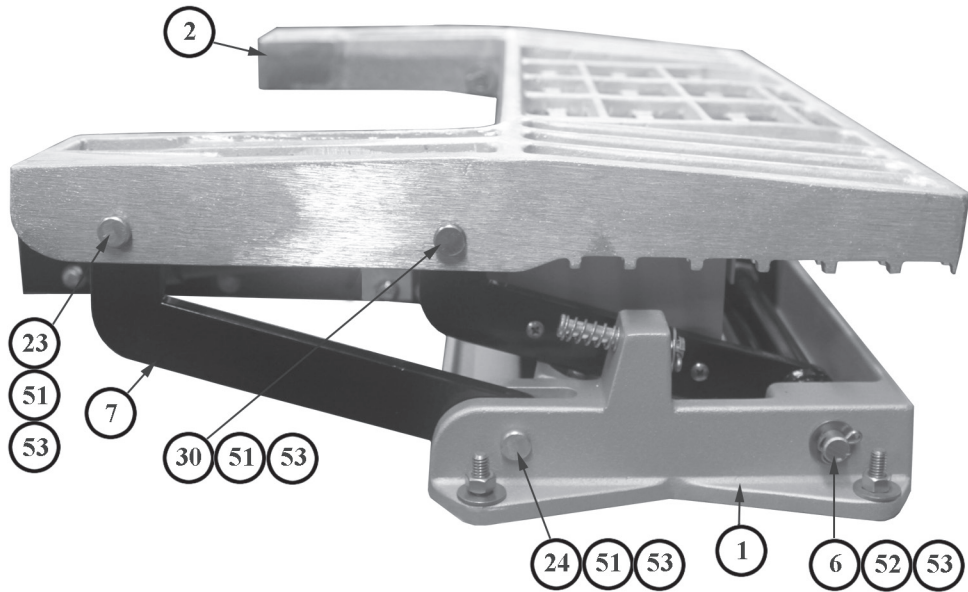




**FIGURE 8 -  
LOWER ASSEMBLY**

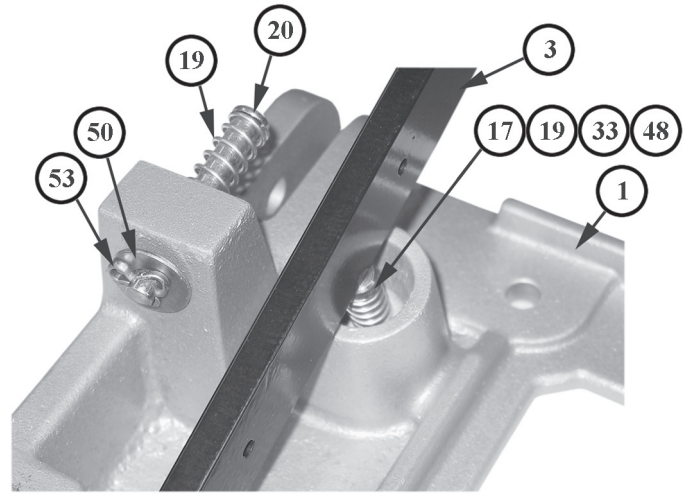
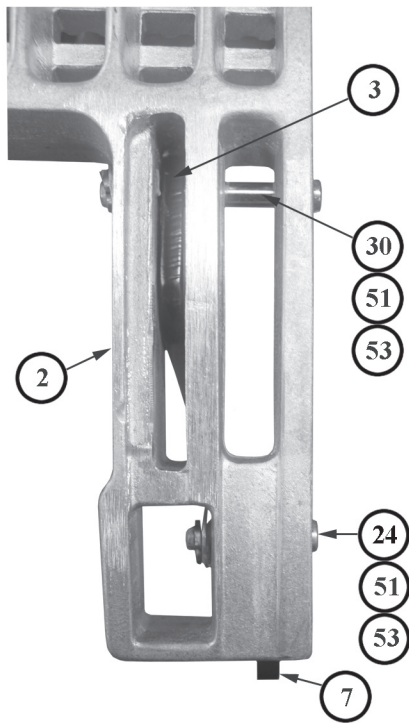
**FIGURE 9 - KICK PLATE**





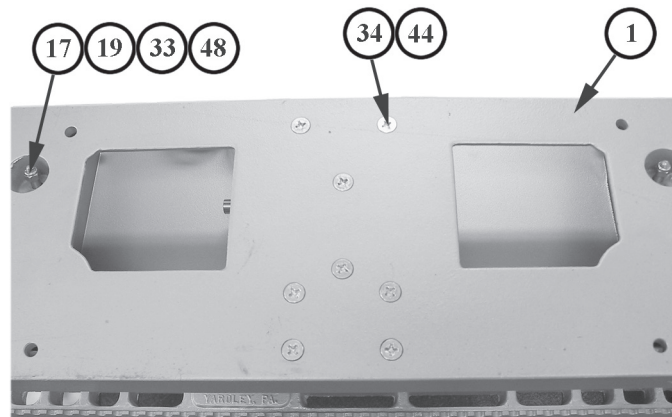
**FIGURE 10 -  
SIDE VIEW**

**FIGURE 11 - STEP**



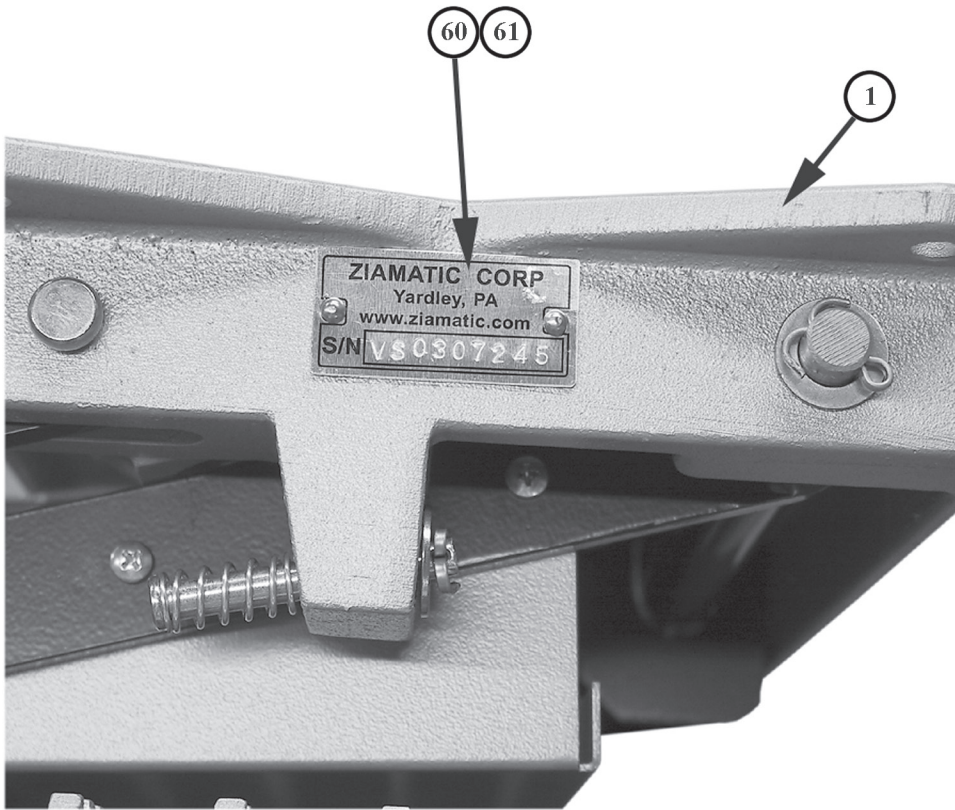
**FIGURE 12 - SPRINGS**

**FIGURE 13 - UNDERSIDE OF BASE**





**SERIAL NUMBER**



**FIGURE 14 - SERIAL NUMBER LABEL**



## Mounting to Apparatus

- A. An 8" center to center hole pattern is provided in the side flanges of the base casting, centered on the 9" deep casting. Additional holes may be added as needed.
- B. Because of the component parts elevated above the case casting, a minimum of 1-3/4" is required above the center of the mounting holes.
- C. The length of the base is 21".
- D. Plates extending down from the apparatus structure that the step is mounted to must be strong enough to support 500 lbs. on the extended step.
- E. 3/8" diameter mounting hardware, a minimum of four, is required.

## Maintenance

- A. Semi-Annually or at Scheduled Apparatus Lube Service
  - 1. Visually inspect step for excess dirt build-up and debris.
  - 2. Lubricate all joints and pivots with CRC Stor & Lube long-term lubricant and rust preventative #03032. Excess lubrication should be wiped off.



*Ziamatic Corp.*

10 West College Avenue, P.O. Box 337, Yardley, PA 19067-0587 • (215) 493-3618 • FAX: (215) 493-1401

\*ZICO is a registered trademark for fire, safety and marine products made by Ziamatic Corp.

[www.ziamatic.com](http://www.ziamatic.com)  
TOLL FREE: 800-711-3473

Copyright Ziamatic Corp. 2-12

# WARRANTY REGISTRATION

PLEASE MAIL OR FAX A COPY TO ZICO TO REGISTER YOUR UNIT

FIRE DEPARTMENT NAME: \_\_\_\_\_ CONTACT PERSON: \_\_\_\_\_

PHONE NO. \_\_\_\_\_ FAX NO. \_\_\_\_\_

STREET ADDRESS: \_\_\_\_\_ P.O. BOX: \_\_\_\_\_

CITY: \_\_\_\_\_ STATE: \_\_\_\_\_ ZIP: \_\_\_\_\_

UNIT MODEL NO.: \_\_\_\_\_

SERIAL NO. ON UNIT: (SEE PAGE 8 FOR LOCATION) \_\_\_\_\_

INSTALLED ON: (VEHICLE MFG.) \_\_\_\_\_ DELIVERED: (DATE) \_\_\_\_\_

WAS UNIT INSTALLED ON: \_\_\_\_\_ NEW VEHICLE

\_\_\_\_\_ RETROFITTED ONTO EXISTING VEHICLE

WHERE DID YOU HEAR ABOUT OUR PRODUCT?

\_\_\_\_\_ MAGAZINE AD (SPECIFY) \_\_\_\_\_

\_\_\_\_\_ DEALER (SPECIFY) \_\_\_\_\_

\_\_\_\_\_ VEHICLE MFG. (SPECIFY) \_\_\_\_\_

\_\_\_\_\_ ANOTHER DEPARTMENT (SPECIFY) \_\_\_\_\_

\_\_\_\_\_ OTHER (SPECIFY) \_\_\_\_\_