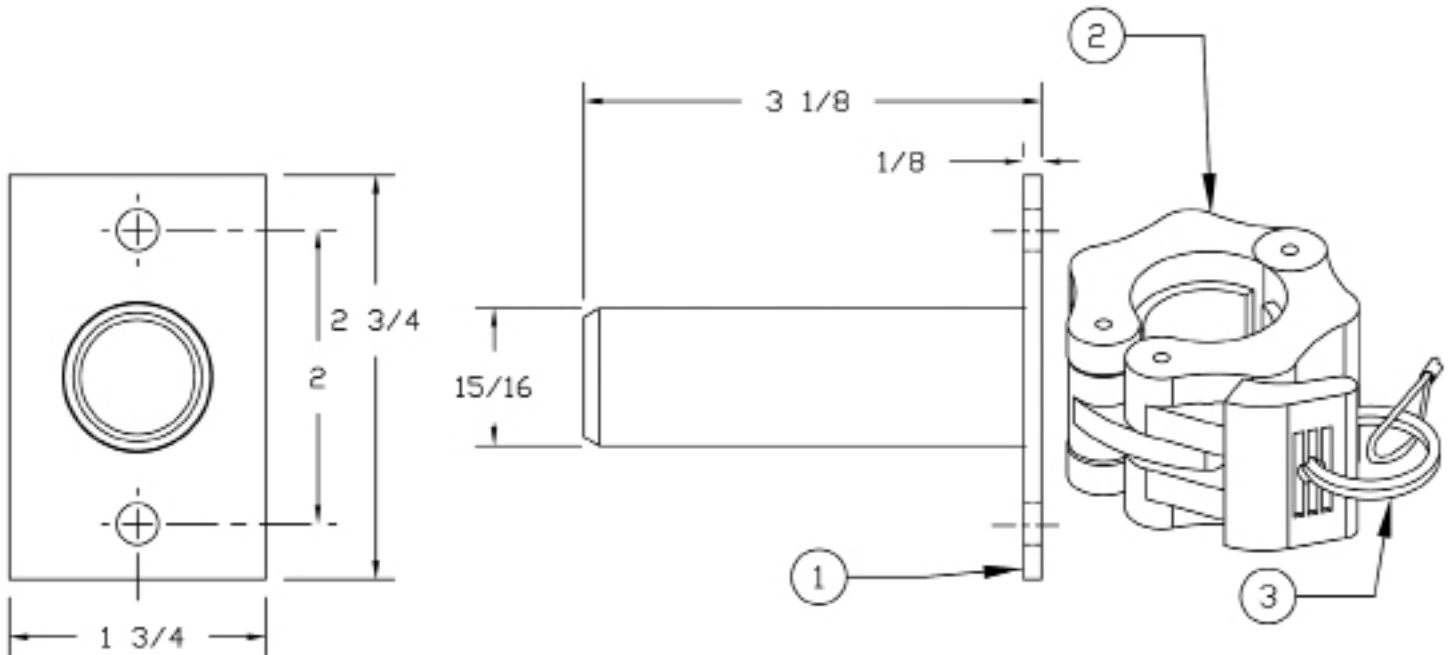


QUIC-MOUNT® SAW BLADE POST MOUNT
MODEL QM-SBPM
PARTS AND INSTRUCTION MANUAL

3087PM12

Rev. 6-21-23



MODEL	DESCRIPTION	WT./@ IN LBS.
QM-SBPM	Saw Blade Post Mount	.80

ITEM	PART NO.	DESCRIPTION	QTY.
1	3087-260-101	Saw Blade Post Mount Welded Assy	1
2	3087-260-105	Clamp, 1"	1
3	3087-260-107	10" Lanyard W/1" Key Ring & ø1/4 Tab	1

Mounting Instructions:

Mount post assembly and lanyard using 1/4" hardware.

Operating Instructions:

To stow:

1. Slide blades to be stored onto the post.
2. Slide clamp onto post until it rests against outermost blade.
3. Press clamp arm to tighten clamp around post.

To Release:

1. Pull clamp arm to unlock clamp from post.
2. Slide clamp off post.
3. Remove blades as needed.



Ziamatic Corp.

10 West College Avenue, P.O. Box 337, Yardley, PA 19067-0587 • (215) 493-3618 • FAX: (215) 493-1401

www.ziamatic.com

TOLL FREE: 800-711-3473

*ZICO is a registered trademark for fire, safety and marine products made by Ziamatic Corp.

Copyright Ziamatic Corp. 3-16