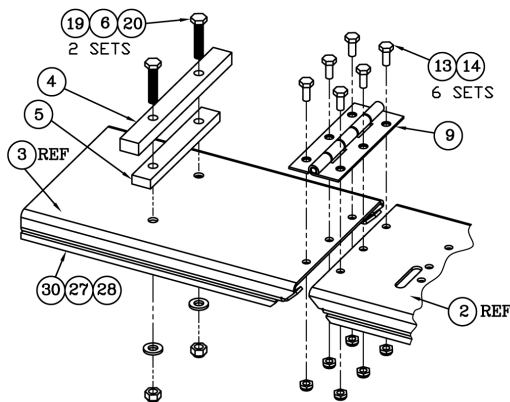
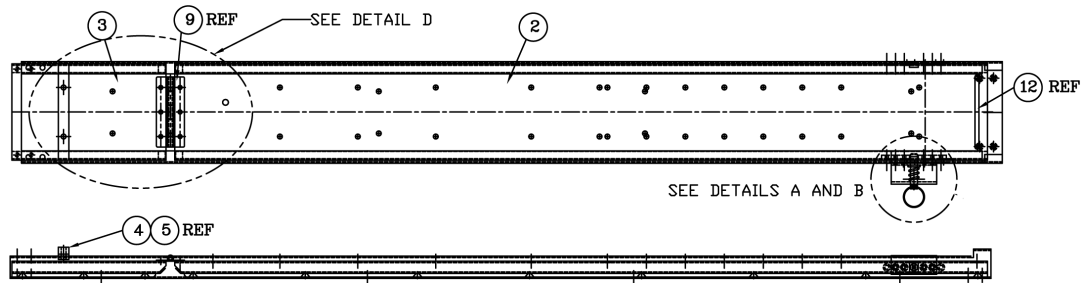


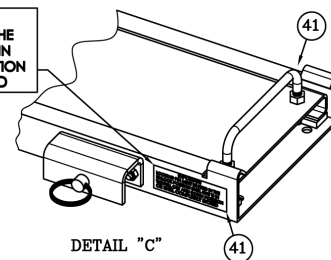
QUIC-RELEASE® SLIDE-OUT & FLIP-DOWN SLIDE ASSEMBLY
MODEL QR-SOFD
PARTS AND INFORMATION MANUAL

NOTE: This mounting device has been designed for use with QUIC-RELEASE gas cylinder brackets, Models QR-MV(manual 3030PM1) and QR-GH (manual 3030PM2).

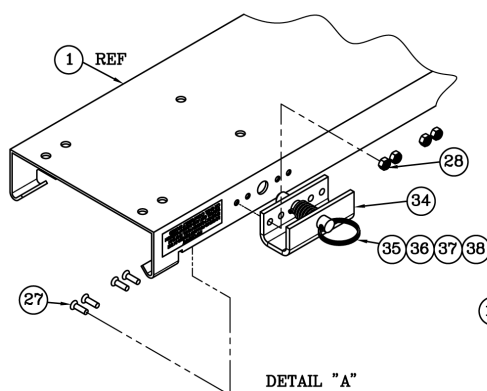


DETAIL "D"

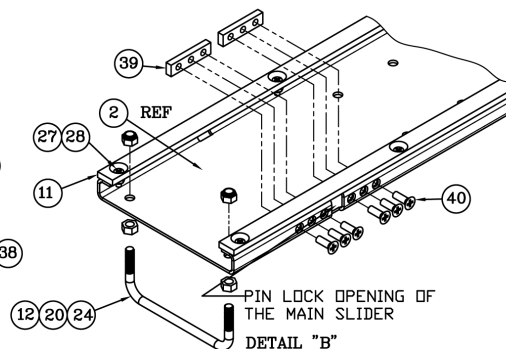
IMPORTANT
 LOCKING PIN MUST BE HELD IN THE
 UNLOCK POSITION UNTIL UNIT IS IN
 THE FULL OUT AND DOWN POSITION
 OR UNTIL COMPLETELY STORED



DETAIL "C"



DETAIL "A"



DETAIL "B"

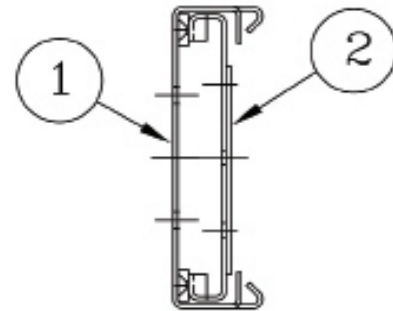
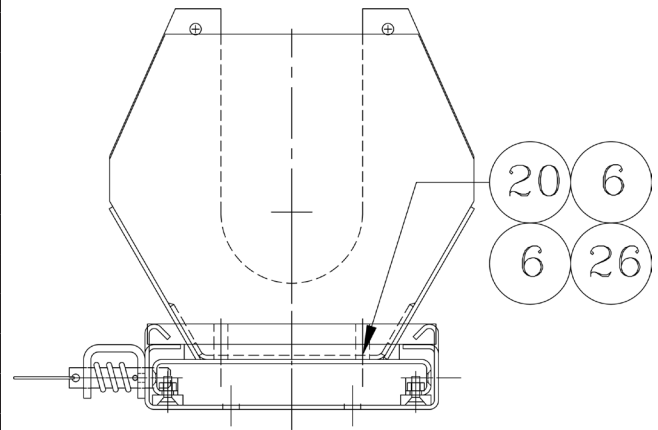
Figure 1

Important: Bearing Blocks (39) must be installed to meet SAE compliance.

ITEM NO.	PART NO.	DESCRIPTION	QTY.
1	3030-160-101	Stationary Housing	1
2	3030-160-103	Slider, Main	1
3	3030-160-105	Slider, Extension	1
4	3030-160-107	Stop Bar	1
5	3030-160-109	Spacer Block	1
6*	9014-183100	5/16 Flatwasher, GR8	34
9	3030-160-117	Hinge, Ref: MMC 15665A336	1
11	3030-160-125	Wear Strip, Main	2
12	3030-160-123	Handle, SS (MMC 11665A31)	1
13	9010-102508	Screw, 1/4-20 x 1/2, Hex Hd.	6
14	9013-172501	Hex Nut, 1/4-20 Nylon Low-Pro	6
19	9010-103124	Screw, 5/16-18 x 1-1/2 Hex Hd.	2
20*	9015-173100	Hex Nut, 5/16-18 Self Lock, GR5	20
24	9012-183100	Hex Nut, 5/16-18	2
26*	9015-103116	Screw, 5/16-18 x 1 Hex Hd, GR5	16
27*	9010-162010	Screw, 10-32 x 5/8 82° FH	26
28	9013-172000	Nut, 10-32 Hex, Nylon Loc	26
30	3030-160-127	Wear Strip, Short	2
34†	3030-160-131	Pin Bracket	1
35†	3030-160-133	Pin, Lock	1
36†	3030-160-135	Spring, Pin, Lock	1
37†	9040-111212	Roll Pin, ø1/8 x 3/4, SS	1
38†	0000-000-123	Key Ring, .142 Thk x 1.48 OD ZP	1
39*	3030-160-139	Bearing Block	2
40*	9010-462510	Screw, Torx, 1/4-20 x 5/8 100° FH	6
41	3030-160-145	Label, Pin Instructions	2

* Items packed separately

† Lock assembly. Pre-assembled and packed separately



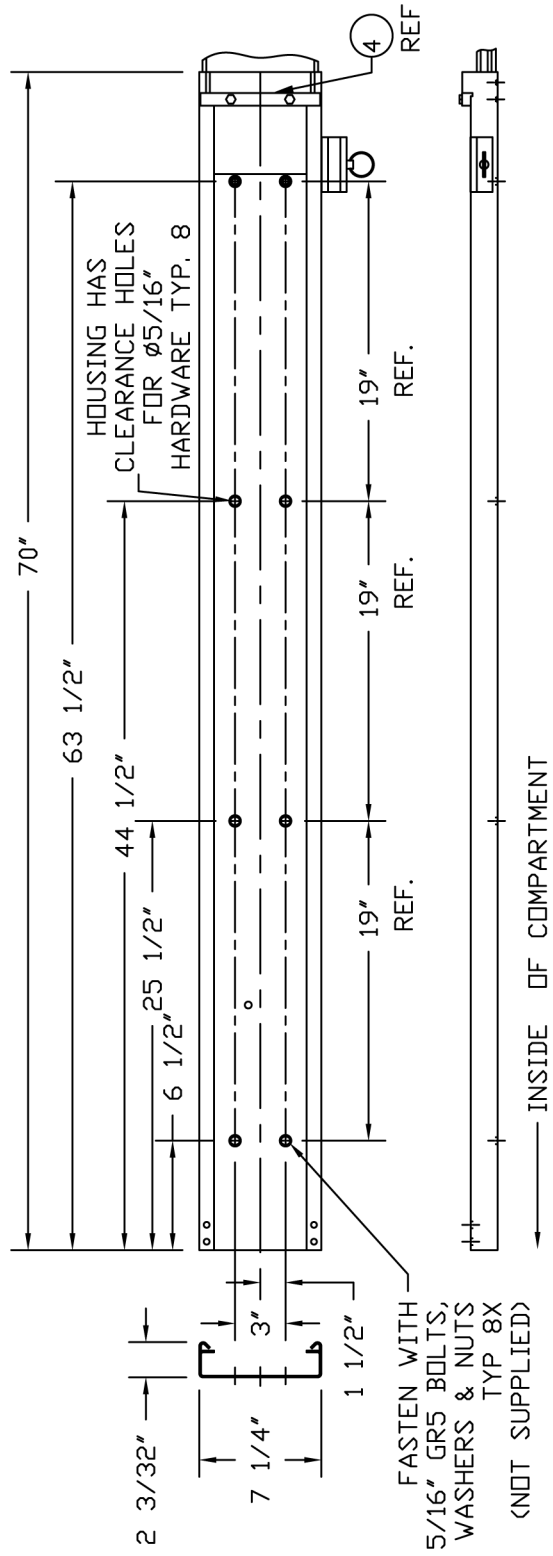


Figure 2

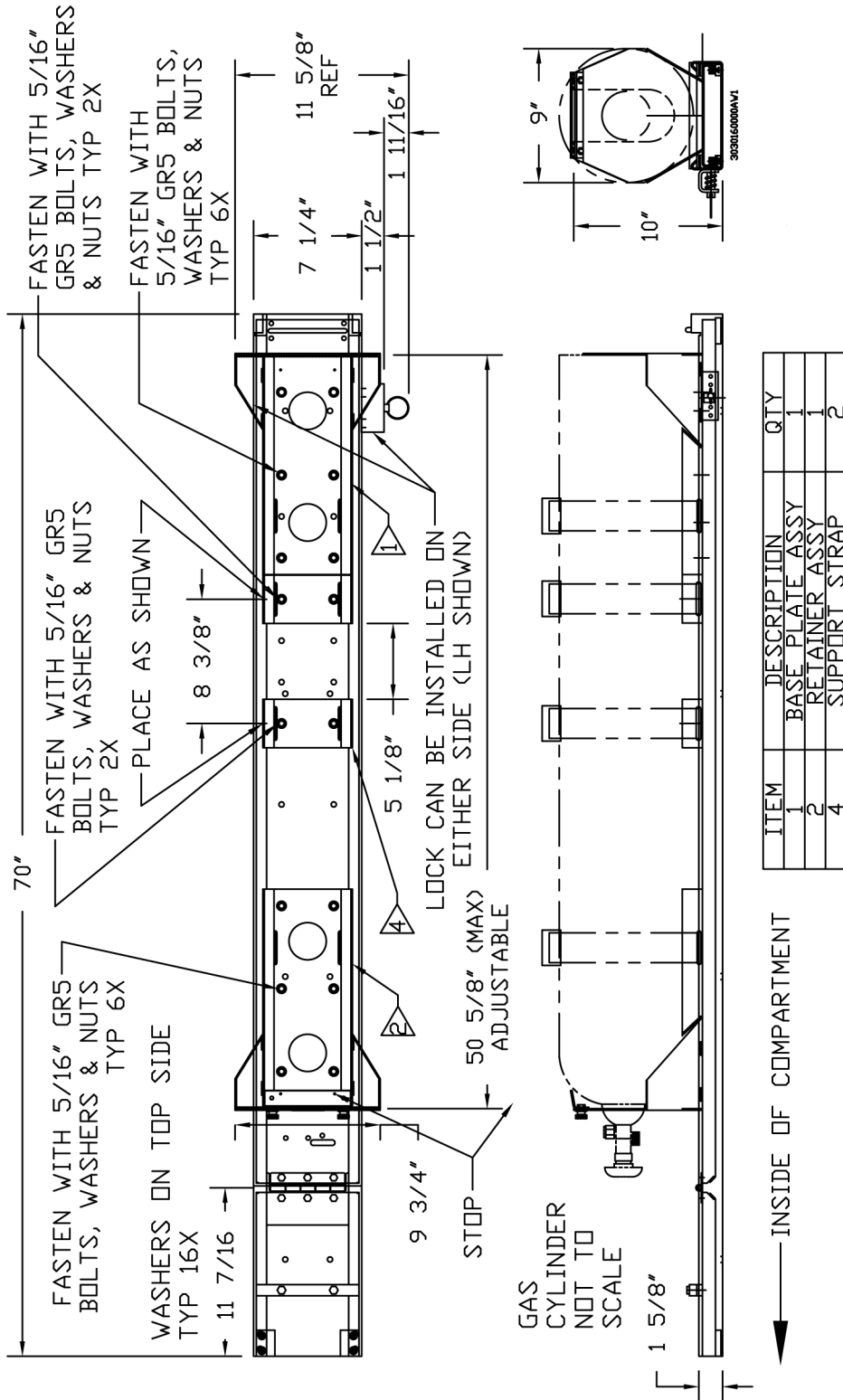


Figure 3

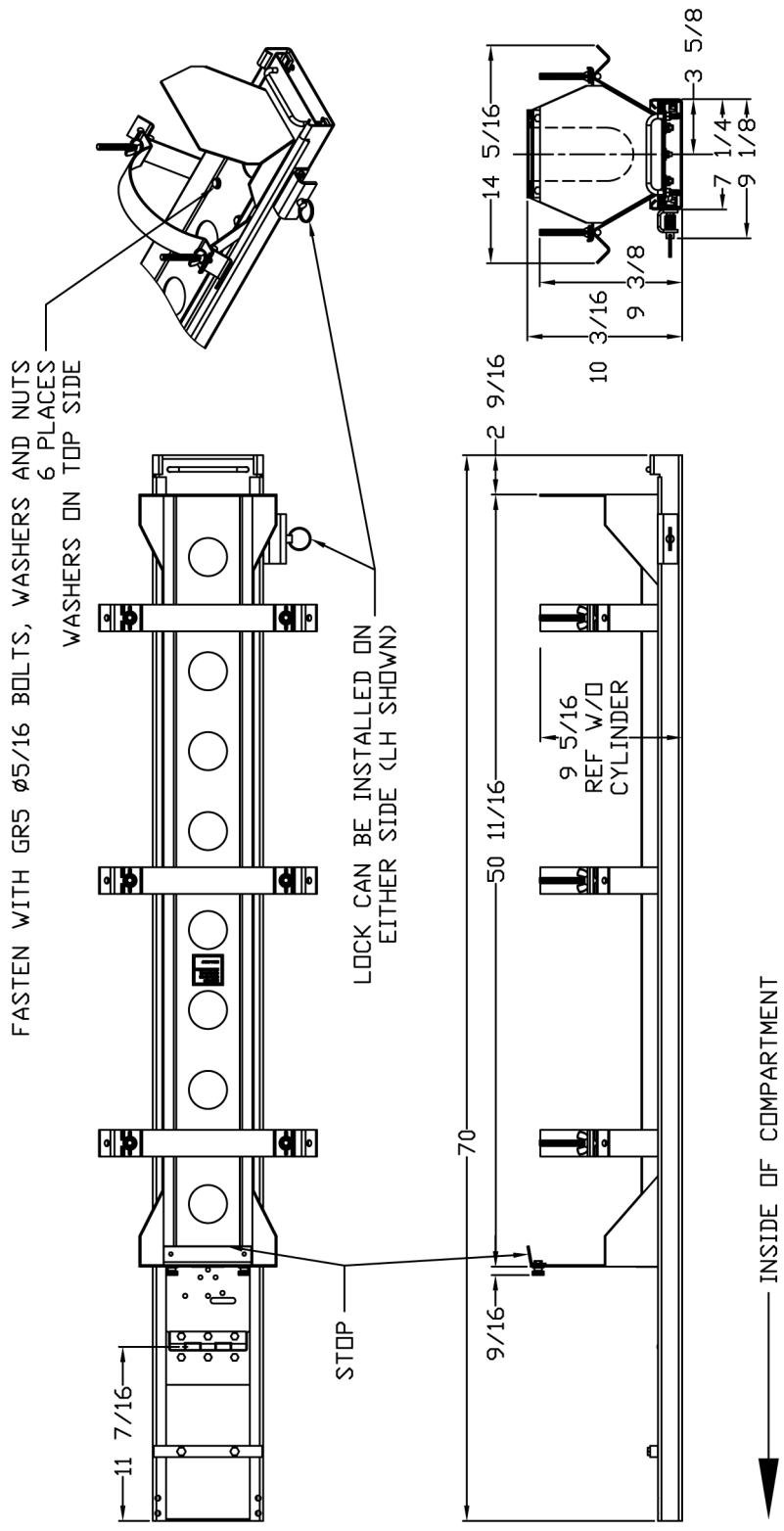


Figure 4

Note: Numbers in parentheses correspond to numbers in Parts List for ease of assembly.

I. Preparing the QR-SOFD

1. Roughly position the QR-SOFD in the apparatus. See Figure 3 (with QR-MV) or Figure 4 (with QR-GH) for overall height dimensions. Note that these dimensions do not include the Gas Cylinder.
2. Decide which side, LH or RH, is best position for the Lock Assembly (34) (35) (35) (27) (38). See Figure 1, Detail “A”.
3. Attach the Lock Assembly to the Stationary Housing (1). See Figure 1, Detail “A”.
Important: The Bearing Blocks (39) and Screws (40) attached in in the following step must be on the same side of the Latch Assembly.
4. Attach the Bearing Blocks (39) using Screws (40) supplied to the Main Slide (2). See Figure 1, Detail “B”.

II. Mounting the QR-SOFD to the Apparatus

1. Position the QR-SOFD in the apparatus. Check for fit and function by using the Handle (12) to pull the Main Slider (2) out. Allow for the Slider to fold down. Check for any interference with the apparatus.
2. Keeping the unit in the extended and folded down position, mark and drill the hole mounting locations shown in Figure 2.
3. Mount the Stationary Housing (1) to the Apparatus using 8 sets of GR5 5/16 bolts, washers and nuts (not supplied).

III. Mounting the QR-MV model to the QR-SOFD for a G or H Gas Cylinder

Note: See Figure 3 for the following steps and refer to the QR-MV manual.

1. The positions of the brackets in Figure 3 are spaced for G and H Gas Cylinders.
2. Mount the four brackets as shown using 16x GR5 5/16-18 Hex Head Screws (26), washers (44) and Nuts (20).
3. Attach the four Strap and Buckle Assemblies. Refer to the manual that is supplied with the bracket.

IV. Mounting the QR-MV model to the QR-SOFD for a typical M Gas Cylinder

Note: See Figure 3 for the following steps and refer to the QR-MV manual.

1. Position and fasten the QR-MV’s Base Plate Assembly to the QR-SOFD Main Slider (2) using 6x GR5 5/16-18 Hex Head Screws (26), washers (44) and Nuts (20).
2. Position QR-MV’s Retainer Assembly to the approximate height of the Gas Cylinder on the QR-SOFD.
3. Place an empty gas cylinder into the bracket.
4. Locate the Retainer Assembly so that the Stop is at the neck of Gas Cylinder. Check for fit and function of the Gas Cylinder in the bracket.
5. Fasten the Retainer Assembly using 6x GR5 5/16-18 Hex Head Screws (26), washers (44) and Nuts (20). Drill Ø11/32 holes if necessary to make sure that the Retainer Assembly has 6 fasteners securing it to the Main Slider (2).
6. See Figure 3 for the locations of the two Support Straps.
7. Fasten a Support Strap using 2x GR5 5/16-18 Hex Head Screws (26), washers (44) and Nuts (20). Repeat for the other Support Strap.
8. Attach the four Strap and Buckle Assemblies. Refer to the manual that is supplied with you bracket.

V. Mounting Model QR-GH models to the QR-SOFD

Note: See Figure 4 for the following steps and refer to the QR-GH manual.

1. Position the bracket as shown.
2. Mount the bracket using 6x GR5 5/16-18 Hex Head Screws (26), washers (44) and Nuts (20).
3. Attach the 3 Straps. Refer to the manual that is supplied with the bracket.

WARNING: Gas Cylinders are heavy and bulky. Personal injury can occur during Gas Cylinder change over. Use caution during the changeover and when lowering the Main Slider (2) to the ground.

VI. Adding a Gas Cylinder to the bracket.

1. Pull out the Key Ring (38) to unlock the lock. Use the Handle (12) to pull out the Main Slider (2) and allow for the Slider to fold down and rest on the ground.
2. Place the Gas Cylinder into the bracket.
3. Secure the straps around the Gas Cylinder.
4. Connect the supply line to the Gas Cylinder valve.
5. Turn the supply line valve on.
6. Turn the Gas Cylinder valve on.

Important: Listen for any gas leaks. Shut off the gas valve immediately. Fix / tighten any faulty connections.

7. Use the Handle (12) to lift up the Main Slider (2) into a horizontal position. Push the Main Slider into the stowed position of the apparatus.

Important: Make sure that the Pin (35) of the Lock Assembly is engaged into the opening of the Main Slider (2). See Figure 1, Detail “B” for location of the opening. Test the engagement by pulling on the Handle (12) and making sure that the Main Slider does not pull out.

VII. Removing the Gas Cylinder from the bracket.

1. Pull out the Key Ring (38) to unlock the lock. Use the Handle (12) to pull out the Main Slider (2) and allow for the Slider to fold down and rest on the ground.
2. Shut the Gas Cylinder valve off.
3. Shut the supply line valve off.
4. Disconnect the supply line at the top of the Gas Cylinder.
5. Remove Stop at the neck of the Gas Cylinder.
6. Undo the straps.
7. Remove the Gas Cylinder from the bracket.

Important: Before replacing the Gas Cylinder, inspect the straps and the bracket components for any damage. Replace parts if needed.



Ziamatic Corp.

10 West College Avenue, P.O. Box 337, Yardley, PA 19067-0587 • (215) 493-3618 • FAX: (215) 493-1401

www.ziamatic.com

TOLL FREE: 800-711-3473

*ZICO is a registered trademark for fire, safety and marine products made by Ziamatic Corp.

Copyright Ziamatic Corp. 8-20