

QUIC-RELEASE® OXYGEN TANK SYSTEM

MODEL QR-OTS-____-U

PARTS AND MOUNTING INFORMATION

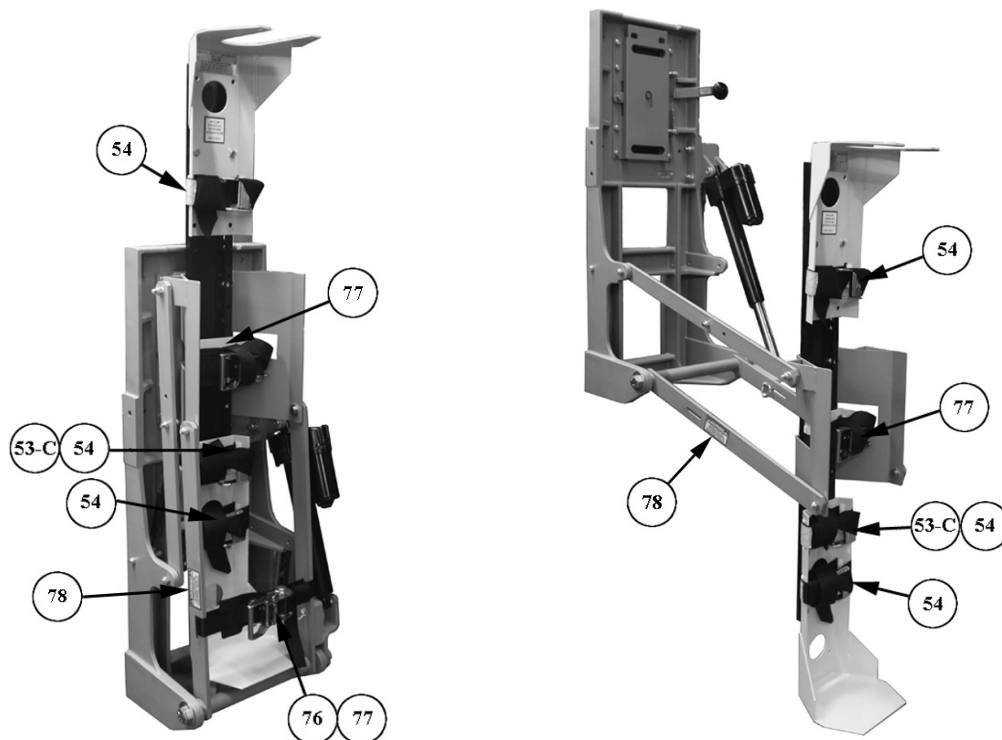
Model QR-OTS-U allows you to mount any "M" through "J" cylinder. The system uses a QR-MV Multiversal bracket to accommodate the range of cylinders.

Powered by a single electric actuator meeting UL-1500 Standard for Ignition Protection, the unit has a maximum lifting capacity of 205 pounds and requires 12 VDC with 14 amp circuit.

Basic device requires a mounting area of 18-1/8" W x 37-5/8" H x 12-3/4" D. Minimum door opening is 14".

Operating latch is on the same side as the motor. See page 5 for optional hand held switch.

Equipped with a backdriving actuator that prevents the unit from holding weight of the apparatus if air suspension on the vehicle is lowered.

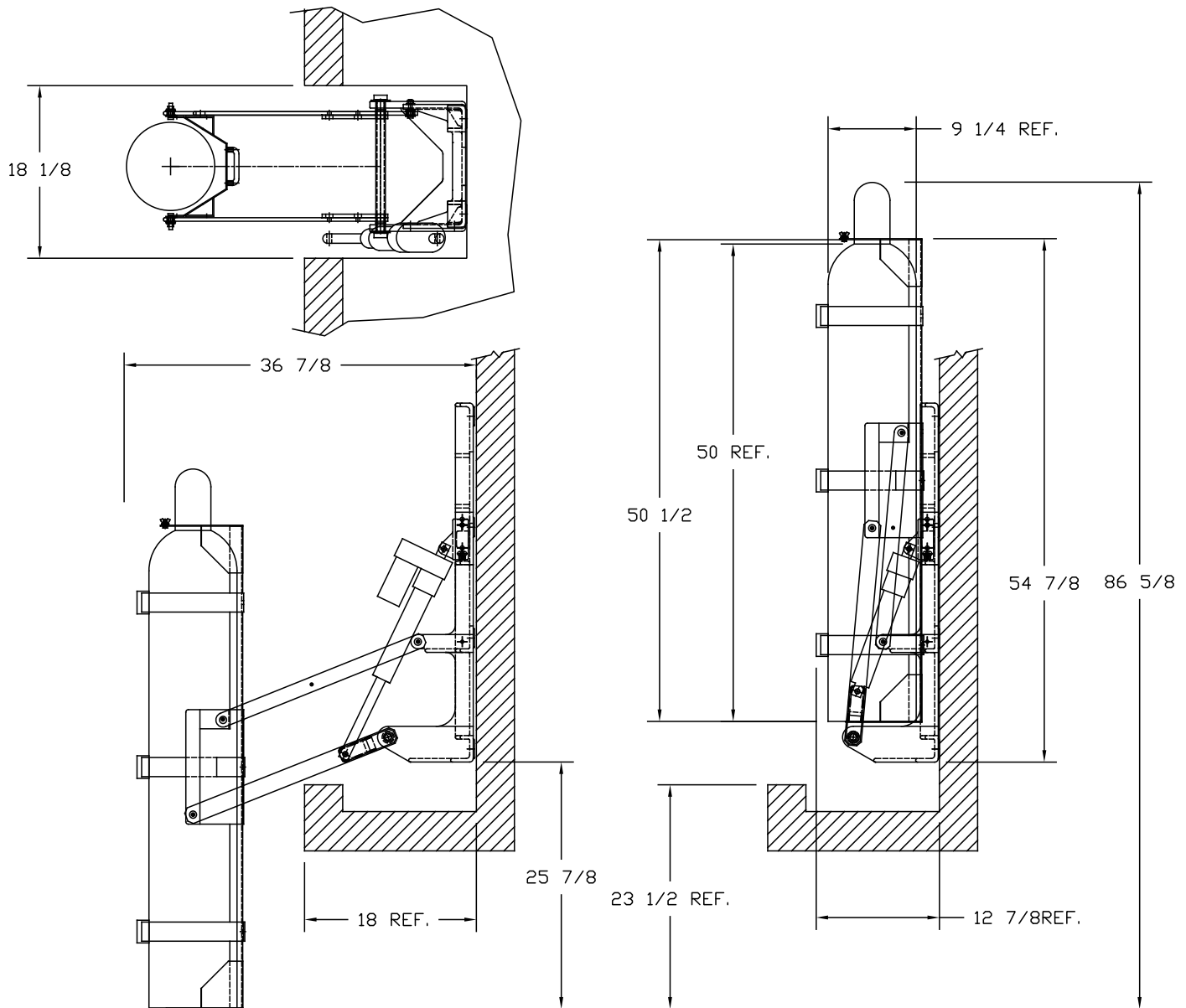


Note: Units shown without Label Mounting Plate (61).
 Attach Label Mounting Plate to
 Retainer Plate (53-B) or near control switch before use.

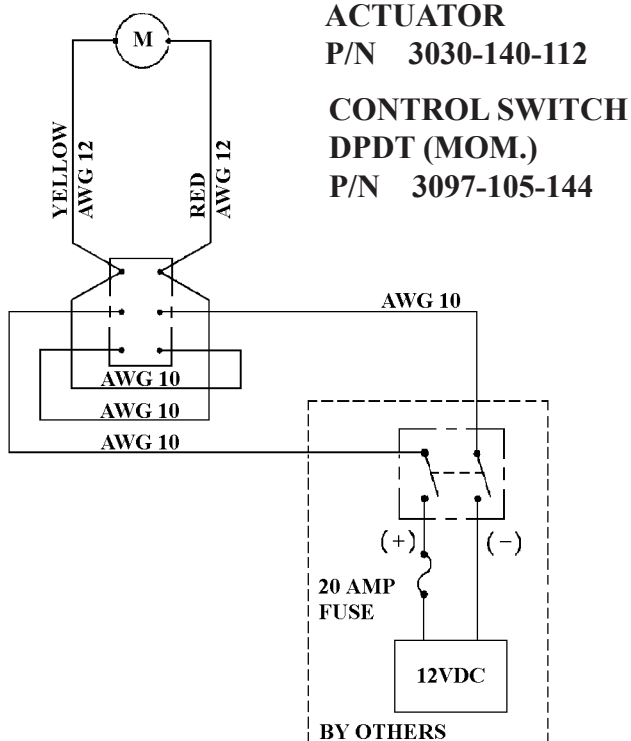
MODEL	DESCRIPTION	WT./@ IN LBS.
QR-OTSR-U	System with motor on right	117
QR-OTSL-U	System with motor on left	117
QR-OTSR-US	System with hand held switch	119
QR-OTSL-US	System with hand held switch	119
QR-MV-OTS	Bracket for QR-OTS-U	16
3030-155-105	Adapter plate for use with QR-MV bracket	12

Mounting Recommendations for Model QR-OTS Oxygen Tank Systems:

- **IMPORTANT:** This bracket has been tested to meet SAE-J3043, AMD Standard 003 and GSA KKK-A-1822E. This should be taken into consideration when selecting the mounting location.
- **Mounting Hardware:** We recommend use of 3/8" diameter hardware at least Grade 8 or better with washers in eight (8) places to mount the base casting.
- **Air Hose:** Should be long enough to allow removal of air hose connection when the cylinder has been lowered to the ground.



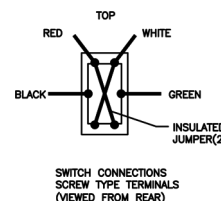
Wiring Schematic for Toggle Switch:



Hand-held switch may be ordered alone (QR-HHS/B) or with a system in place of the standard toggle switch. Comes with mounting bracket.

Wiring Schematic for Hand-Held Switch:

FIELD WIRING CONNECTIONS	
CABLE	CONNECT TO:
BLACK	12VDC (+)
GREEN	12VDC (-)
WHITE	ACTUATOR (YELLOW)
RED	ACTUATOR (RED)



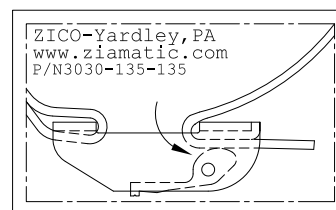
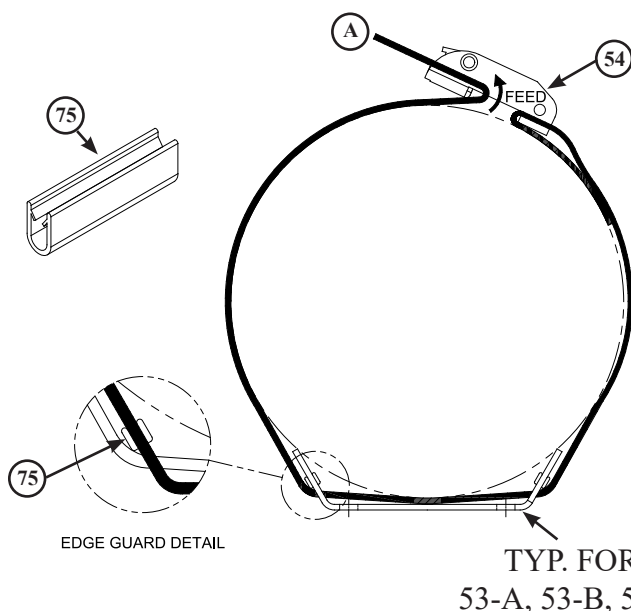
Proper threading of outside strap through the buckle assembly:

IMPORTANT:

Running end of strap "A" goes underlatch and back through front of latch between retainer and thumb release.

Outside Straps
P/N
3030-135-135

Ratchet Straps
P/N
3030-135-138



Strap threading label sewn on strap, near buckle

Straps should be inspected often and replaced if they show signs of wear or fraying. Otherwise, they should be replaced every three(3) years to ensure adequate retention.

ITEM	PART NUMBER	DESCRIPTION	QTY
1	3030-140-101	Base Casting	1
2	3030-140-103	Lifting Arm Weldment	1
3	3030-140-111	Adapter, Lifting Arm To Tank Brkt.	1
4	3030-140-113	Positioning Arm	1
5	3030-140-116	Neoprene Pad	2
6	3030-140-117	Upper Mtg. Brkt. Actuator	1
7	3030-140-119	Housing, Locking Mechanism	1
8	3030-140-121	Slider, Locking Mechanism	1
9	3030-140-123	Hook, Locking Mechanism	2
10	3030-140-125	Handle, Locking Mechanism	1
11	3030-140-127	Lifting Arm Sleeve	2
12	9014-117500	Plainwasher, 3/4ø ID	2
13	9010-107540	Screw, 3/4-10 x 2-1/2 Hex Hd.	2
14	3030-140-149	Damper, Hydraulic	1
15	3030-140-133	Sleeve, Steel	4
16	9018-103716	Pivot Screw 3/8-16 x 1" Hex Hd. Grade 8	3
17	9013-173700	Nut, 3/8-16 Self Locking	5
18	9018-103728	Pivot Screw 3/8-16 x 1-3/4" Hex Hd. Grade 8	1
19	9014-263700	3/8 External Tooth Lockwasher Steel Zinc	1
20	9018-103116	Mtg. Screw, Lock Mech 5/16-18 x 1 Hex Hd. Gr 8	6
21	9010-315036	Shoulder Screw, 1/2 x 2-1/4 Grip	1
22	9050-005056	Quic Release Pin x 3-1/2 Grip	1
23	9018-104364	Mtg. Screw, Upper Mtg. Brkt. 7/16-14 x 4 HH Gr8	2
24	9010-382512	Setscrew, Upper Mtg. Brkt. 1/4-20 x 3/4 Cup Point	2
26	3030-140-141	Spacer, Steel	2
27	3030-140-130	Washer, Spring 1/2 ID x 1 OD, SS	1
28	9014-203100	Lockwasher, 5/16 Split	14
29	9015-103120	Screw, 5/16-18 x 1-1/4 HH Gr. 5	10
30	9010-103110	Mtg. Screw, Brkt. To Adapter 5/16-18 x 5/8 Hex Hd.	10
31	3030-155-105	Adjustable Backplate	1
32	9010-103128	Mtg. Screw, Lock Mech HSG 5/16-18 x 1-3/4 Hex Hd.	2
33	3030-140-112	Electric Actuator, 12VDC	1
34	2070-105-119	Knob, Plastic	1
35	9010-113716	Screw, 3/8-24 x 1", Hex Hd.	1
36	9014-203700	3/8 Split Lockwasher	1
37	3030-140-147	Retainer, Latch Handle	1
38	3030-140-157	Spacer, Steel	2
39	3030-140-159	Compression Spring	2
40	9013-174300	Nut, 7/16-14 Self Locking	2
41	9014-183100	Flatwasher, 5/16 Nom. x 1/16 Thk.	6
42	9014-113700	3/8 USS Flat Washer Steel Zinc	6
43	9014-204300	Lockwasher, 7/16 Split	1
44	9014-113700	Flatwasher, 3/8 Nom.	5
45	9012-103700	Nut, 3/8-16 Plain, Hex	1
46	3030-140-161	End Fitting, Damper (Provided with Item#14 ONLY)	2
47	9013-173100	Nut, 5/16-18, Hex Self Locking	11
48	9018-103156	Damper To Base Mtg. Screw 5/16-18 x 3-1/2 Hex Hd.	1
49	9010-103124	Damper To Arm Mtg. Screw, 5/16-18 x 1-1/2 Hex Hd.	1

ITEM	PART NUMBER	DESCRIPTION	QTY
50	9012-103100	Nut, 5/16-18 Plain, Hex	3
51	3030-140-163	Spacer, Damper to Base, Alum	2
53-A	3030-135-105	Base Plate	1
53-B	3030-135-110	Retainer Plate	1
53-C	3030-135-120	Support Strap	2
54	3030-135-135	Strap & Buckle Assembly	3
55	3097-105-144	Switch, Toggle, DPDT (mom.)	1
56	3030-140-167	Label "Handle Must Be In..." NOT SHOWN	1
57	3030-140-169	Label "Unlock/Lock"	1
58	3030-140-165	Nylon Tree Rivet Hole Dia. 3/16, 7/16	4
59	3030-140-171	Label "Stand Clear..." NOT SHOWN	1
60	3030-140-172	Label "Must Read..."	1
61	3030-140-173	Label Mounting Plate	1
63	3030-000-109	Stop, Cylinder	1
64	9010-102512	Screw, 1/4-20 x 3/4 Hex Head	2
65	9112-352500	Thumb Nut, 1/4-20	2
66	9014-112500	1/4 Nom., Flatwasher	4
71	9120-101102	Drive Screw #4 x 1/8" Type "U"	2
72	0000-000-105	Label, Model Number, Metal	1
73	3030-000-115	Label, "Meets KKK Specs" NOT SHOWN	1
74	9114-113700	5/16 Flatwasher	1
75	3030-135-145	Edge Guard, 2"	8
76	3030-140-178	Label, Remove Strap Before Operating	1
77	3030-135-138	Ratchet Strap & Buckle Assy.	2
78	3030-140-176	Label, Strap Must Be Secured	2

Labels provided with your system



Label Assembly Shipped Unmounted

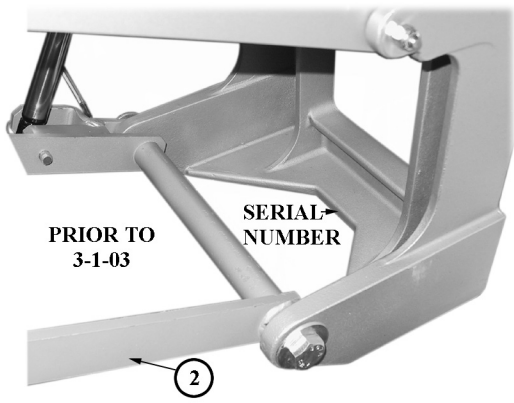


3030-140-178

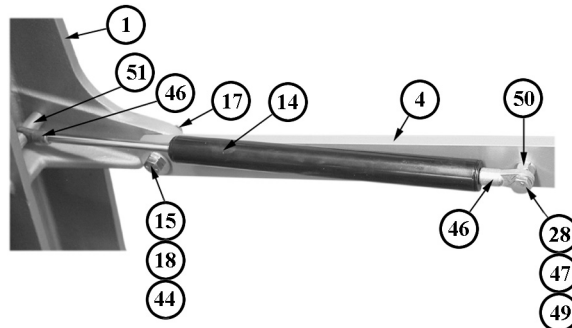
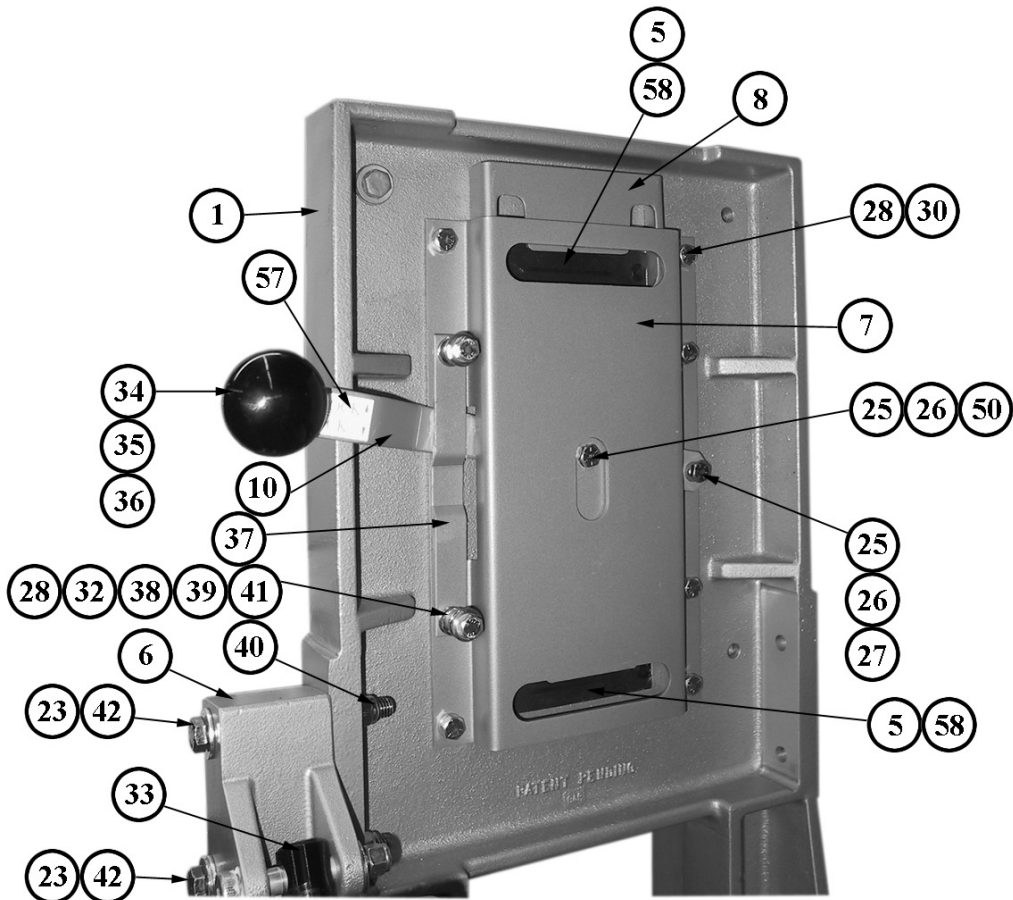


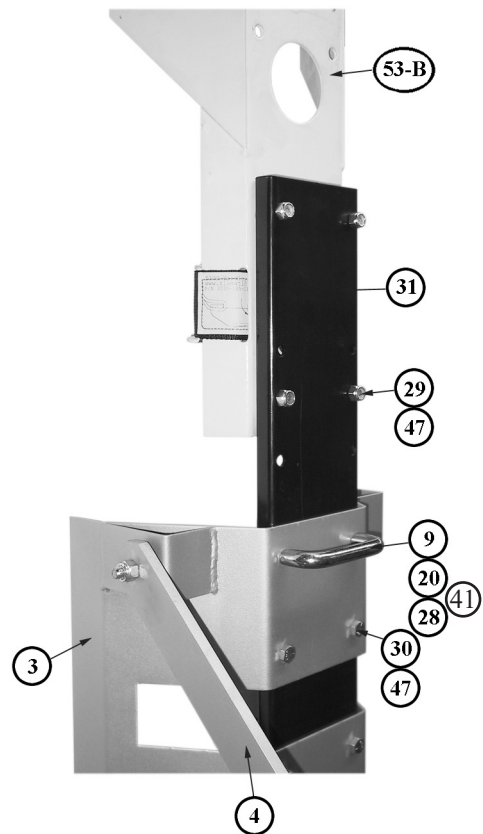
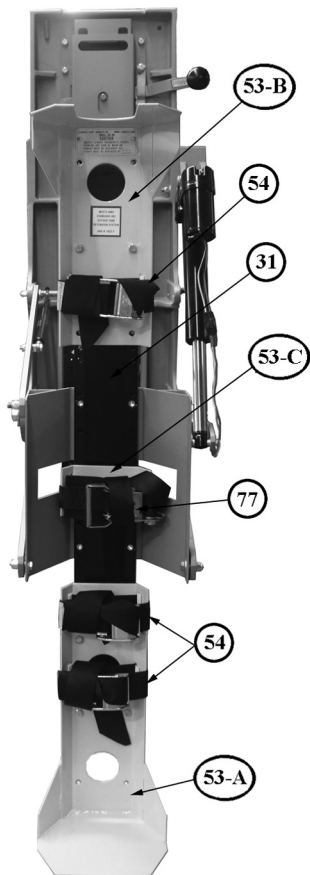
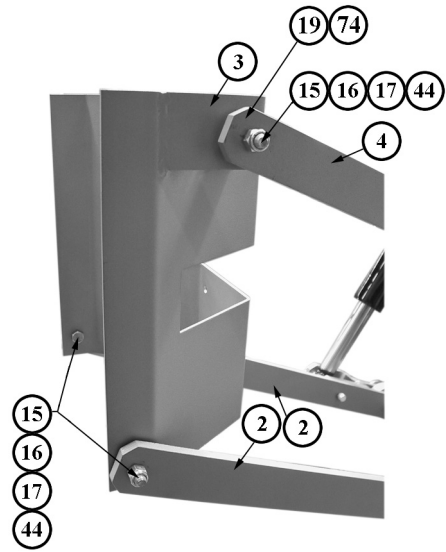
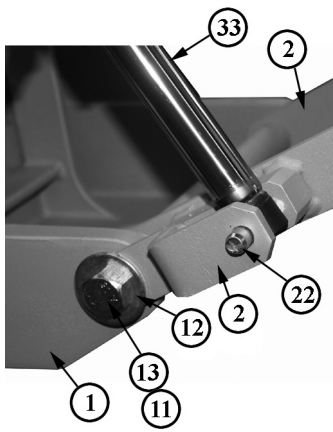
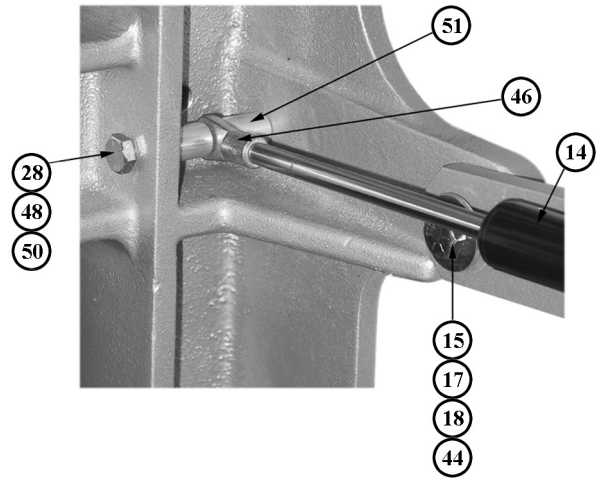
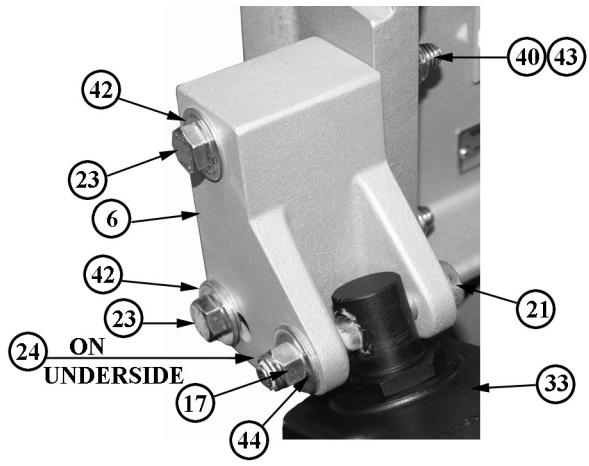
3030-140-176

Serial number location



Parts Diagrams





Periodical Maintenance

We recommend lubricating all pivot points with Krytox™ GPL 226 Grease

Straps should be inspected often and replaced if they show signs of wear or fraying. Otherwise, they should be replaced every three(3) years to ensure adequate retention.

Notes



Ziamatic Corp.

10 West College Avenue, P.O. Box 337, Yardley, PA 19067-0587 • (215) 493-3618 • FAX: (215) 493-1401

www.ziamatic.com

TOLL FREE: 800-711-3473

*ZICO is a registered trademark for fire, safety and marine products made by Ziamatic Corp.

Copyright Ziamatic Corp. 1-98