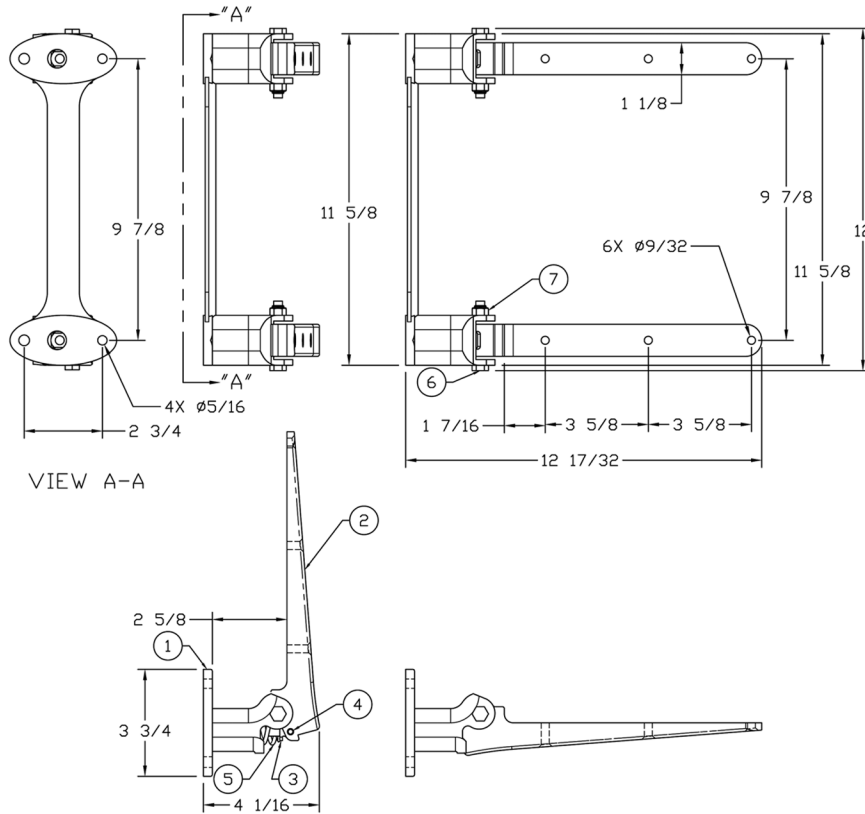


QUIC-SEAT® DOUBLE FOLD-DOWN SEAT BRACKET
MODEL SE-FD
PARTS AND INFORMATION MANUAL



MODEL	DESCRIPTION	WT./@ IN LBS.
SE-FD	Double Fold-Down Seat Bracket	7.4

ITEM	PART #	DESCRIPTION	QTY.
1	3020-000-105	Base Casting	1
2	3020-000-110	Pivot Arm	2
3	3020-000-115	Spring Guide	2
4	9040-102116	Spring Pin, Ø7/32 x 1", ZPS	2
5	3020-000-120	Spring, Compression	2
6	9015-103140	Bolt, 5/16-18 x 2-1/2", Hex Hd, ZPS, GR5	2
7	9013-173100	Nut, 5/16-18, Locking, ZPS	2
8	3020-000-140	Label, Caution, Use Seat Belt	1



Ziamatic Corp.

10 West College Avenue, P.O. Box 337, Yardley, PA 19067-0587 • (215) 493-3618 • FAX: (215) 493-1401

www.ziamatic.com

TOLL FREE: 800-711-3473