

ZICO®

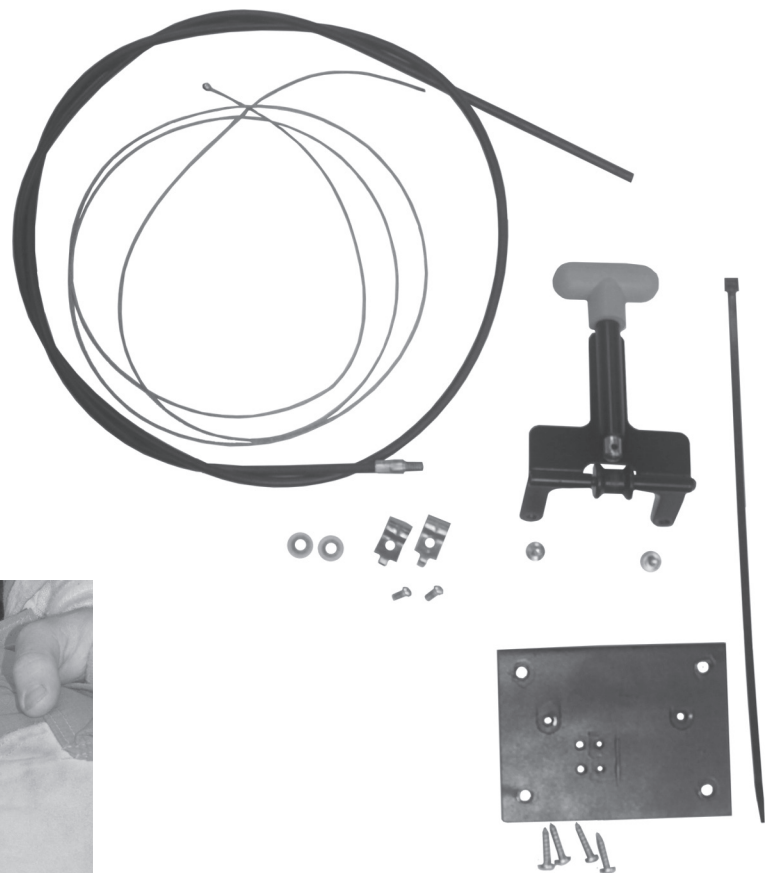
1045PM13

Rev. 7-6-17

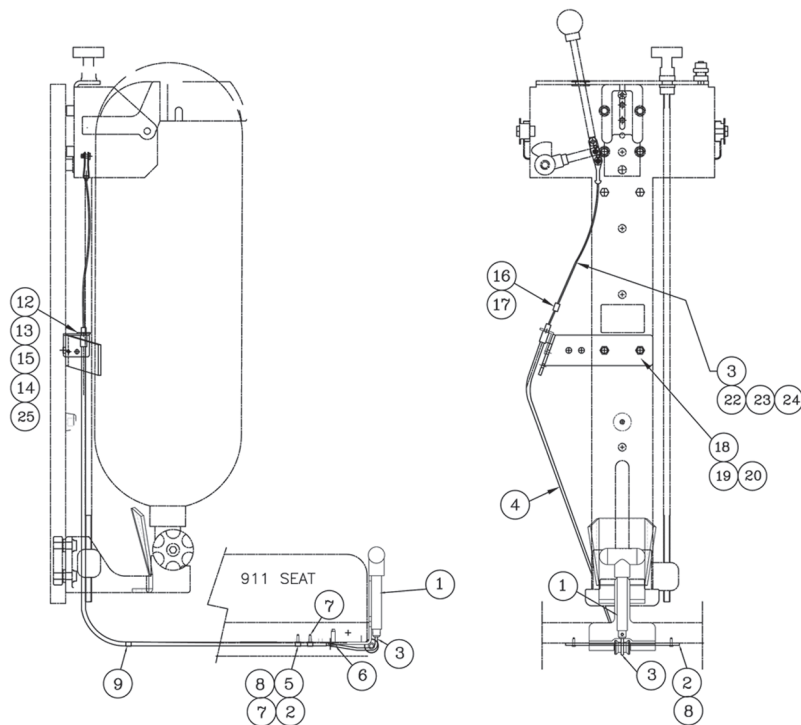
**CENTER PULL RELEASE IN 911 FLIP-UP SEAT
FOR THE QUIC-LOCK MECHANICAL BRACKET
MODEL QM-QLM-CPR-F**



The center pull release kit allows the SCBA bracket to be released by pulling a "T" handle located on the front of the seat. The kit puts the release in an accessible location where it is not in the way of the SCBA pack straps or the seat belt. It includes all of the parts needed for setup.



Model QM-QLM-CPR-F is made for the QUIC-LOCK SCBA bracket in a Seats, Inc. 911 Flip-up seat. For additional models or other combinations, please contact us at 1-800-711-FIRE.



ITEM NO.	PART NO.	DESCRIPTION	1 QTY.
1	1010-065-905	Center Pull Release Assembly	1
2	1027-146-101	Flip-Up Plate	1
3	1045-505-101	Pull Release Cable Assembly 52"	1
4	1027-105-129	Conduit w/Crimped Fitting 41.5"	1
5	1027-144-105	Conduit Clamp (22-2054-00)	2
6	9025-172006	10-32 x 3/8, Thrd Frming, ZPS Screw	2
7	9010-221606	8-32 x 3/8 PH PHIL	2
8	9085-002012	#10 x 3/4" Phillip Pan S/M/S ZPS	4
9	0000-000-184	Nylon Cable Tie, Black 11"	1
10			
11			
12	1027-105-137	Push Nut (For 6M Rod	1
13	1027-105-135	Pull Release Brkt., Upper	1
14	9010-222012	Nut, 10-32, Nylon Lock Nut	1
15	9020-101305	#6 x 5/16 SS Drive Screw	1
16	1045-320-185	Stop Sleeve	1
17	9010-391603	Setscrew, #8-32 x 3/16 Flat Point	1
18	1045-320-135	Bracket, Release	1
19	9015-102512	Screw, 1/4-20 x 3/4 HH, ZPS GR5	2
20	9114-112500	Plainwasher, 1/4ø SS	2
22	9082-001209	Hairpin Cotter, MMCi98335A031	1
23	9014-111900	Plainwasher, #10 SZP	1
24	9080-001808	Clevis Pin, 3/16ø x 1/2" Lg.	1
25	9010-502010	Screw, 10-32 x 5/8 Btn Head Socket	1

Center Pull Release Installation for 9-11 Series Flip-Up

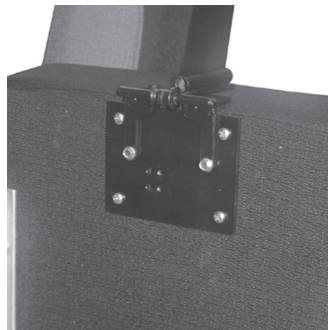
Before installing the Center Pull Release kit, make sure that the QUIC-LOCK is fully adjusted for the SCBA being used.

Note: Numbers in parentheses refer to part number (see page 2)

1. Mount the center pull assembly (1) to the flip-up plate (8) with the two 10-32 x 3/8" screws (11). The position of the plate is between the pull release assembly and the seat bottom.



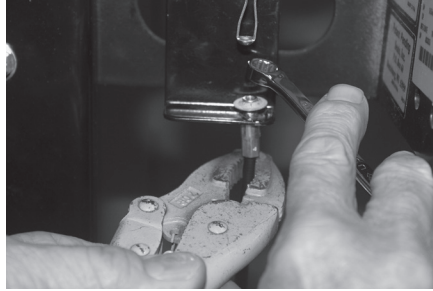
2. Locate the release assembly at the front of and center of the seat and attach with four #10 screws (9).



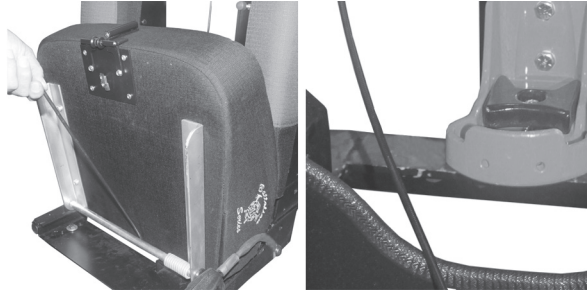
3. Mount the conduit clamps (10) to the plate with the 8-32 x 3/8" screws (4). Do not tighten.



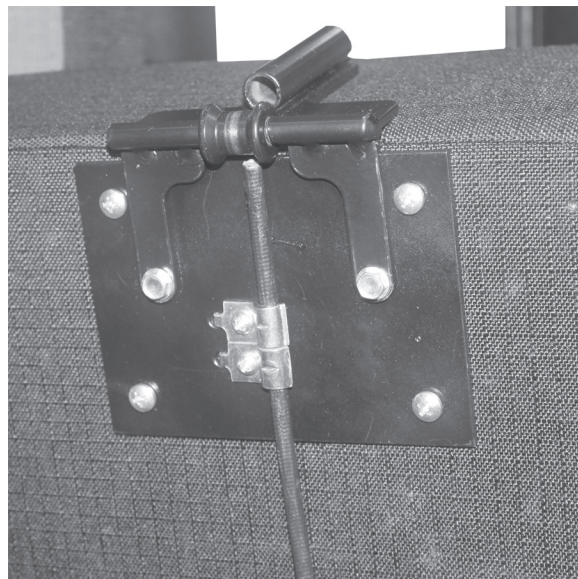
4. Attach the conduit assembly 47" (3) to the mounting bracket using a 6mm push nut (an extra push nut, Item 5, is provided in the event the first is damaged during installation).



5. The end of the conduit (3) with the crimped fitting can now be routed between the seat and the hinge rod and up to and through the access hole to engage the pull release bracket attached to the top strap.



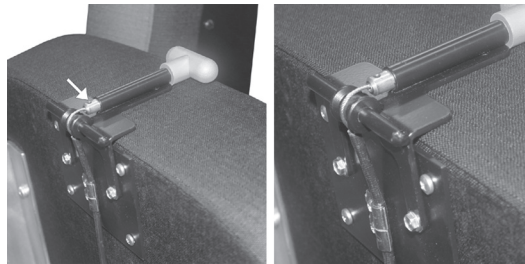
6. Feed the non-crimped end of the conduit through the clamps, push it even with the end of the plate, and tighten the clamps.



7. Attach your new cable (2) through the strap fork. Slide your new spring (7) onto the cable.



8. Feed the cable under the roller and toward the bottom of the "T" handle and insert the cable into the bottom of the "T" handle shaft. Make sure the "T" handle is in the down position, then tighten the two 5/64" hex set screws (there is one front and one back; the handle will need to be rotated 180 degrees to reach the second screw).



Ziamatic Corp.

10 West College Avenue, P.O. Box 337, Yardley, PA 19067-0587 • (215) 493-3618 • FAX: (215) 493-1401

*ZICO is a registered trademark for fire, safety and marine products made by Ziamatic Corp.

www.ziamatic.com
TOLL FREE: 800-711-3473

Copyright Ziamatic Corp. 7-17