

# QUIC-INDEX® MULTIPLE BRACKET HOLDER MOUNTING INSTRUCTIONS AND PARTS LIST

### Model MBH Multiple Bracket Holder

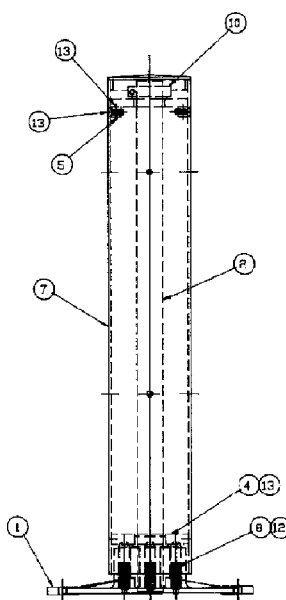
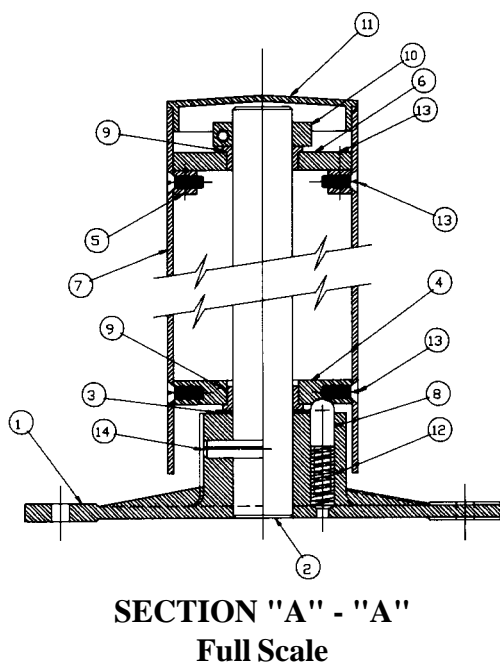
Up to four standard ZICO WALKAWAY® brackets may be mounted on the multiple bracket holder.

#### To Install Brackets:

1. Remove aluminum cap (11) from top of column (7). Might need to be lifted off.
2. Hold down on corner of column with one hand while loosening socket head cap screw in split collar (10). Use 3/16" socket head wrench.
3. Remove split collar and set aside.
4. Lift column off post (2).
5. Looking into top of column, remove four 1/4-20 phillips screws (13) from top support (6). Set aside top support and screws.
6. Mount brackets using 1/4-20 x 1" hex head screw and lock nuts as provided. Hex head screw is to be located on the bracket with the nut inside the column so as not to damage the air cylinder.

**NOTE:** Two holes are provided on each side of the column (7). Bracket should be mounted so that the top of the bracket is flush with the top column. Use center hole locations 3 and 5 on the bracket for mounting with the four 1/4-20 x 1" hex head screws and lock nuts provided.

7. To reassemble, follow steps 5 to 1, being careful to fully depress column downward tightening set screw on split collar.



LUBRICATE V-GROOVES IN ITEM NO. 4 AND BEARINGS ITEM NO. 9 WITH LUBRIPLATE NO. 630-2 MULTI-PURPOSE GREASE ANNUALLY.

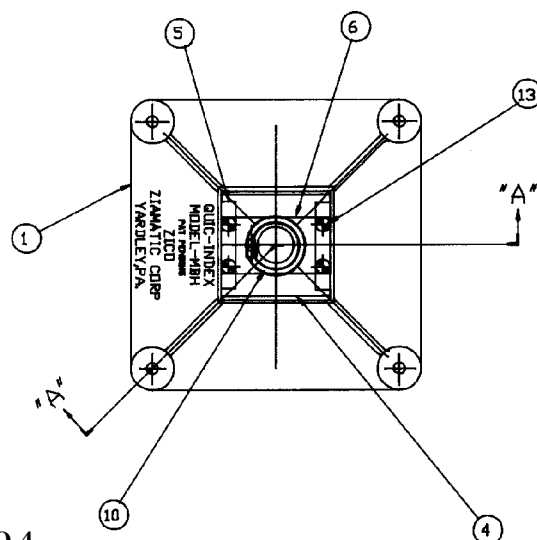
#### To Mount Multiple Bracket Holder:

1. Set complete unit, with brackets attached and air cylinders in place, in the desired mounting location. Make sure that adequate clearance exists for indexing unit in this position.

**NOTE:** If air cylinders extend up above cap plug (11), the brackets may be lowered on the column. Be sure that adequate clearance exists to pull air cylinder out of bracket without striking lip on compartment or other obstructions. New holes may have to be drilled in column. Remove column prior to drilling as metal filings will damage rotating mechanism.

2. Mark four mounting holes using base casting (1) as template.
3. Drill four 25/64" holes and mount unit with 3/8" bolts (not provided).

ITEM NO.	PART NO.	DESCRIPTION	QTY.
1	1035-105-105	Base Casting, Aluminum	1
2	1035-105-110	Post, 1-1/4" Dia.	1
3	1035-105-115	Washer, Nylon	1
4	1035-105-120	Bottom Support, 3-1/2" x 1/2"	1
5	1035-105-125	Top Support Bar, 1/2" x 1/2"	2
6	1035-105-130	Top Support, 3/8" x 2"	1
7	1035-105-135	Column, Aluminum Tube 4"	1
8	1035-105-140	Plunger	4
9	1035-105-145	Bearing	2
10	1035-105-150	Collar	1
11	1035-105-155	Cap/Plug, Casting, Aluminum	1
12	1035-105-160	Spring, Compression	4
13	9110-162512	Screw, Fl. Hd., 1/4-20 x 3/4" Lg.	12
14	9140-133732	3/8 x 2" Spiral Pin	1
15	9010-102516	Screw, 1/4-20 x 1" Hex. Hd.	8
16	9013-172500	Nut, 1/4-20 Hex. Hd., ESNA	8



**NOTE: THIS VIEW SHOWN WITH ITEM 11 REMOVED**

QUIC-INDEX® Lazy-Susan provides a convenient means of mounting tools, fittings and appliances.

Shelves rotate to bring items at the back around to the front for easy removal.

Complete unit fits into compartment 24" W x 25-1/2" H.

MODEL NO.	PART NO.	DESCRIPTION
MBH-S	1035-115-000	Shelf Only
MBH-SMB	1035-120-000	Shelf Mounting Bracket Set
MBH/1-SH	1035-125-000	MBH with One Shelf & Bracket
MBH/2-SH	1035-130-000	MBH with Two Shelves & Brackets
MBH/3-SH	1035-135-000	MBH with Three Shelves & Brackets

Mounting bracket bolts to standard MBH with hardware provided.

24" diameter shelf bolts directly to the mounting bracket.

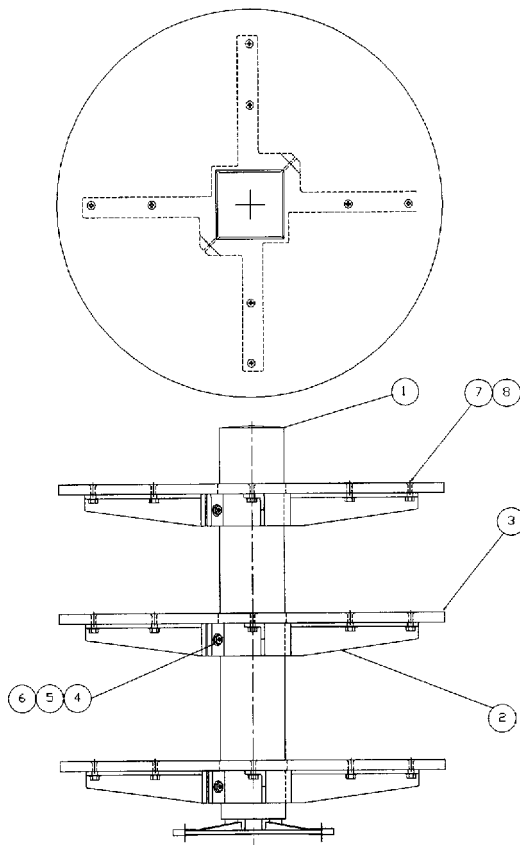
Shelves may be moved up or down on shaft and locked into place as desired. Shelves may be added or deleted without removal of the MBH.

5/8" thick formica covered particle board shelf with polyethylene strip around perimeter.

Single shelf may be used to mount up to four fire extinguishers with QUIC-STRAP cylinder mounting system.

### Mounting Instructions:

1. Follow mounting instructions for the Multiple Bracket Holder on front page.
2. Secure shelf mounting bracket set (2) in desired location using bracket mounting screws (4), nuts (5) and lockwashers (6).
3. Place shelf (3) on top of brackets (2) and clamp in place.
4. Mark location for 1/4-20 screws from underside.
5. Remove shelf and drill holes for 1/4-20 screws using 1/4" drill bit. Countersink holes on top side for flat head screw.
6. Place shelf on top of brackets and attach using flat head screws (7) and lock nuts (8).



ITEM	PART NO.	PARTNAME	QTY.		
			MBH/1-SH	MBH/2-SH	MBH/3-SH
1	1035-105-000	Multi. Brkt. Holder	1	1	1
2	1035-120-105	Shelf Mtg. Brkt. Set	1 Pair	2 Pairs	3 Pairs
3	1035-115-105	Shelf	1	2	3
4	9010-103124	5/16-18 x 1-1/2" Brkt. Mtg. Screw	2	4	6
5	9012-103100	5/16-18 Brkt. Mtg. Nut	2	4	6
6	9014-203100	5/16ø Lockwasher	2	4	6
7	9010-102524	1/4-20 x 1-1/2" Shelf Mtg. Screw	8	16	24
8	9013-172500	1/4-20 Shelf Mtg. Nut	8	16	24



**Ziamatic Corp.**

10 West College Avenue, P.O. Box 337, Yardley, PA 19067-0587 • (215) 493-3618 • FAX: (215) 493-1401

\*ZICO is a registered trademark for fire, safety and marine products made by Ziamatic Corp.

Call Toll Free (800) 711-FIRE

Copyright Ziamatic Corp. 6-97